

# Model 3706 PS TELEHANDLER

# JLG®



## Performance

Rated capacity	3700 kg	
Maximum lift height	6.1 m	
Capacity at max height	2500 kg	
Capacity at maxreach	1500 kg	
Lift speed (boom retracted)		
Up	5.0 sec	
Down	4.0 sec	
Boom speed (extended/retracted)		
Extended	4.5 sec	
Retracted	5.0 sec	
Top travel speed (standard engine)	32 km/h	
	Standard:	Optional:
Engine:	74.4kW 4 speed	90kW 6 speed
Drawbar pull (loaded)	69.3kN	88.65kN
Outside turning radius (over tyres)	3.70 m	
Operating weight (no attachment)	8200 kg	

## Standard Specifications

### Engine

Make and model	Deutz TCD 3.6 L4
No. of cylinders	4
Displacement	3.6 L
Standard engine gross power	74.4kW
Maximum torque at 1600 RPM	420Nm
Optional engine gross power	90.0kW
Maximum torque at 1600 RPM	480Nm
Fuel tank capacity	150 L

### Transmission

- 4 Speed forward - 3 reverse powershift transmission
- 6 Speed forward - 3 reverse powershift transmission (optional)
- 4-wheel drive

### Axles

- Front axle rigid mounted planetary steer axle
- Limited slip differential on front axle
- Rear axle trunnion mounted planetary steer axle

### Brakes

- Service brakes are inboard wet disc brakes on front axle
- Parking brake external disc and calliper on input shaft of front axle

### Tyres

- Standard Mitas 15.5/80-24 16ply
- Optional (more available) Pneumatic Michelin 440/80R24 power CL

### Cab

- EROPS and FOPS fully glazed all weather cab
- 2 way adjustable mechanical suspension seat

### Steering 4-Wheel

- Power steering with steering wheel spinner
- Two wheel/four wheel/crab steer with rear wheel assisted alignment

### Instruments

- Engine glow start assist
- Fuel gauge
- Hour- and tachometer
- CE marking
- Telescope function reconfiguration
- Battery isolator switch
- Bucket mode switch

## Hydraulic System-Implement

Capacity 90 L

- 63cc variable displacement load sensing piston pump
- Maximum pump flow 150 L/min.
- Auxiliary hydraulic flow - intermittent 80 L/min.

## Accessories & Options

- Rear hydraulic pick up hitch
- Hydraulic trailer braking
- Rotating Beacon
- Air conditioning
- Wide range of hitches, couplers, carriages and tyres
- Work Lights
- Boom Suspension
- Road Lights

## Attachments

Standard:  
Standard carriage 4000 kg  
Standard coupler Mechanical quick switch coupler

Optional:  
Side shift carriage 1200 mm  
Fork positioning carriage 1225 mm  
Side shift pallet forks 1200 mm x 50 mm x 100 mm  
Pallet fork (4000 kg) 1200 mm x 60 mm x 100 mm

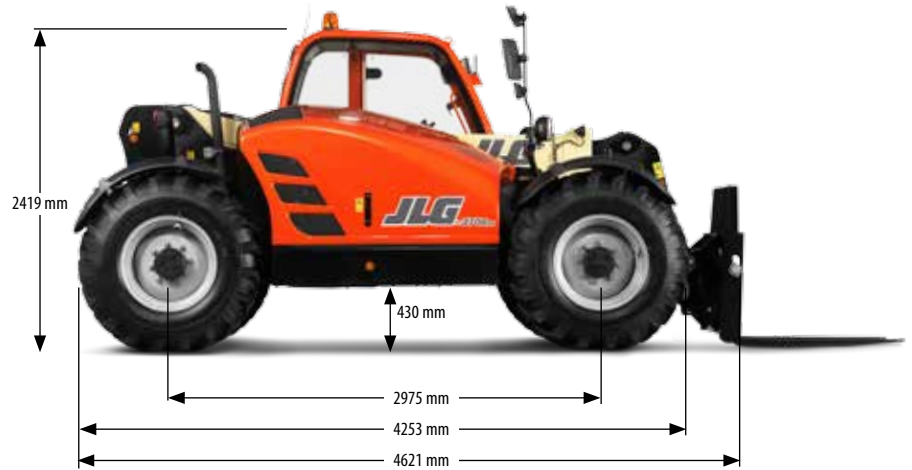
Hitches Rear hydraulic pick up hitch  
Couplers Hydraulic quick switch coupler JLG, JCB, Manitou  
Manual coupler JLG, JCB, Manitou

Concrete mixer bucket 500 L capacity, 1100 kg  
Multi-Purpose bucket with grab 2.4 m, 1.0 m<sup>3</sup>  
4-1 Bucket 2.4 m, 1.0 m<sup>3</sup>  
Digging buckets 2.4 m, 0.8 m<sup>3</sup>  
2.4 m, 1.0 m<sup>3</sup>

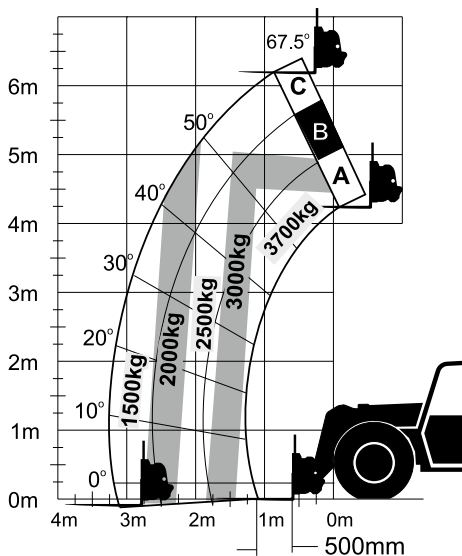
Lifting Hook 3700 kg  
Truss Boom 3.4 m, 1000 kg  
3.6 m, 650 kg

# Model 3706 PS TELEHANDLER

## Dimensions



## Load Chart and Dimensions



### IMPORTANT

All dimensions are approximate. Rated lift capacities shown are with machine equipped with carriage and pallet forks. The machine must be level on a firm surface with undamaged, properly inflated tyres. Machine specifications and stability are based on rated lift capacities at specific boom angles and boom lengths. (If specifications are critical, the proposed application should be discussed with your dealer.) DO NOT exceed rated lift capacity loads, as unstable and dangerous machine conditions will result. DO NOT tip the machine forward to determine the allowable load.

Use only JLG approved attachments with proper material handler model/attachment load capacity charts displayed in the operator's cab.

Due to continuous product improvements, JLG Industries reserves the right to make specification and/or equipment changes without prior notification.



### JLG Industries, Inc.

Polaris Avenue 63  
2132 JH Hoofddorp  
The Netherlands  
Tel: +31 (0)23 565 5665  
Fax: +31 (0)23 557 3750  
[www.jlgeurope.com](http://www.jlgeurope.com)

An Oshkosh Corporation Company