

APPLICATIONS

- Landscape contractors
- Brick and block layers
- All maintenance and construction work
- Building supplies
- Facilities maintenance
- Agriculture
- Steel building construction

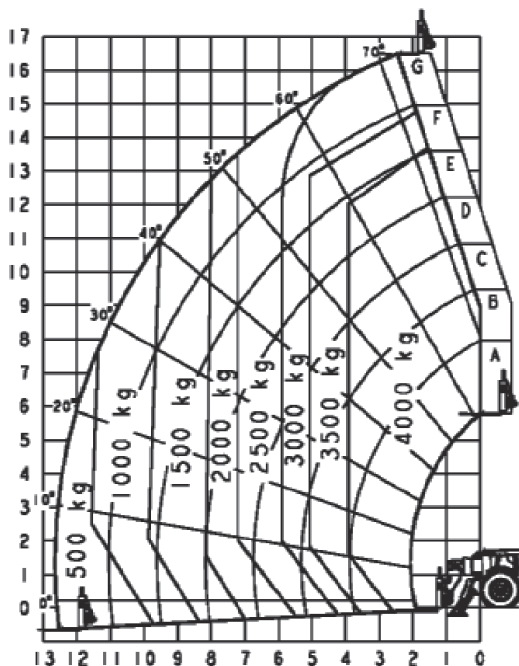
Adjustable stabilisers at angle to chassis to increase forward and side stability

QUESTIONS TO ASK

- What are the ground conditions in the work area?
- What are the site conditions travelling around the site?
- What is the working height needed for the job?
- What is the outreach required for the job?
- What is the rated capacity of the load on forks?
- Do you need to lift a freely suspended load with a jib?

KEY SELLING POINTS

- Smooth control, Powershift 4 speed forward and 3 speed reverse, 4 wheel drive
- Proportional lift, telescope and fork tilt
- Proportional function stabilisers operate at angle to chassis to increase longitudinal and lateral stability
- LMIS system (3B6) for use with jib for freely suspended loads
- Oscillating rear axle, assists 4 wheel drive traction
- Front 2 wheel steer, 4 wheel steer, and crab steer
- Hydraulic frame sway (levelling)
- Australian specification air conditioning for operator comfort
- Large construction lug pattern air filled tyres
- Plug in JLG analyser in the cabin and dash panel display analyser to indicate system functions for servicing and adjustment
- Perkins engine 4 cylinder turbo, high speed, liquid (water cooled), 75kW/100HP engine with pre-glow and post-glow feature reduces emissions
- EN15000 Boom Control



SPECIFICATIONS

Engine – Standard:

| | |
|--------------|---------|
| Engine Make | Perkins |
| Displacement | 4.4 Ltr |
| Gross Output | 74.5kW |

Transmission:

| | |
|----------------------|------------|
| Drive | 4W |
| Transmission Type | Powershift |
| No. of Gears Fwd/Rev | 4F/3R |

Tyres:

| | |
|----------------------|------------------|
| Tyres Front Standard | 405/70-24 |
| Tyres Rear Standard | 405/70-24 |
| Pneumatic Tyre Type | MPT04 Industrial |

Chassis:

| | |
|-------------------|------------|
| Chassis Levelling | Yes |
| Steering Type | 2W/4W/Crab |

Hydraulics:

| | |
|---------------------------|--------------|
| Pump Type | Axial Piston |
| Maximum Flow | 132 Ltr/min |
| System Pressure | 250 Bar |
| No. of Auxiliary Services | 1 |

Capacities:

| | |
|-----------|---------|
| Fuel Tank | 140 Ltr |
|-----------|---------|

Static Dimensions:

| | |
|------------------------|--------|
| Length (Less Forks) | 6.10m |
| Overall Width | 2.38m |
| Height | 2.52m |
| Maximum Lift Height | 16.70m |
| Wheelbase | 2.85m |
| Ground Clearance | 0.42m |
| Turn Radius Over Tyres | 3.80m |
| Turn Radius Over Forks | 5.40m |

Operating Weight:

| | |
|------------------|----------|
| Operating Weight | 11,995kg |
|------------------|----------|

Performance - General:

| | |
|----------------|-------|
| Load Centre | 0.60m |
| Breakout Force | 70kN |

Summary - On Tyres:

| | |
|------------------------------|---------|
| Maximum Lift Capacity | 4,000kg |
| Maximum Forward Reach | 9.70m |
| Height with Maximum Capacity | 7.00m |
| Capacity at Maximum Height | 500kg |
| Capacity at Maximum Reach | 500kg |
| Maximum Reach with 1,000kg | 6.60m |

Summary - On Outriggers:

| | |
|------------------------------|---------|
| Maximum Lift Capacity | 4,000kg |
| Maximum Forward Reach | 12.50m |
| Height with Maximum Capacity | 13.50m |
| Capacity at Maximum Height | 3,000kg |
| Capacity at Maximum Reach | 500kg |
| Maximum Reach with 1,000kg | 10.00m |