

KALEJA GmbH
D-73553 Alfdorf

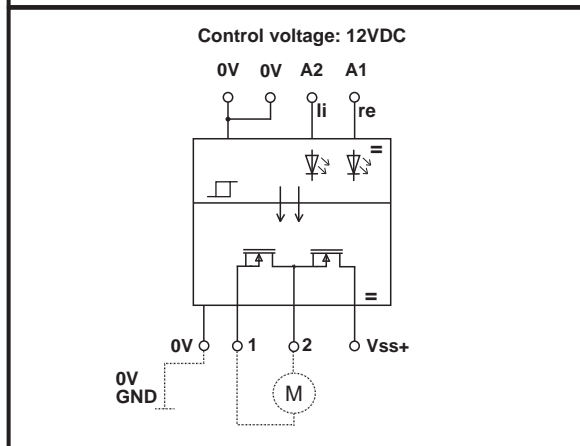
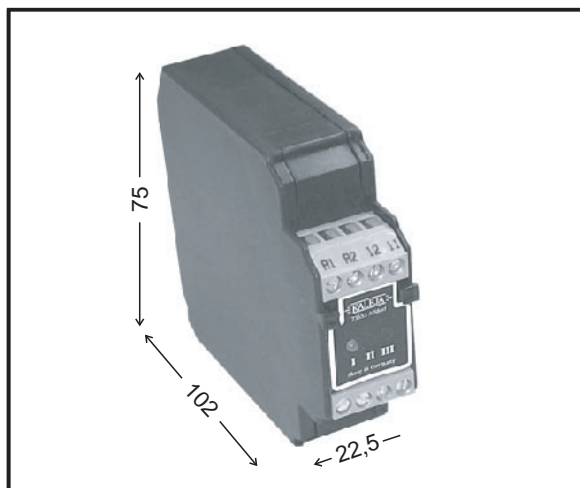
**Motor-speed control for
brush sticking
direct current motor
Threshold voltage: 12VDC**

**Implementation for switching current
up to 8A. With change of rotation**

**Direct-coupled between input circuit
and output circuit**

**To snap onto DIN - rail EN 50022
and EN 50035**

Construction width: 22,5mm



Short designation / type	Rated voltage: 12VDC Maxi-MW-8-12
Art. - No.	06.04.014
Technical data: input circuit	
Rated voltage / threshold voltage	12 VDC
Range of rated voltage min. / max.	9V to 15VDC
Input current during rated voltage	10mA
Status indicator	LED 3mm yellow
Technical data: output circuit	
	MOS-FET
Range of switching voltage / motor voltage	12VDC to 35VDC
Max. permanent load current	8A
Min. load current	1 mA
Impulse current	30 A
Switching frequency	50 Hz by 8A
Output circuit	mass binded
Forward resistance at ON-state	20 mOhm
Other data	
Ambient temperature range	-20°C to + 50°C
Absence of vibration a/r (10...500Hz)	> 20 / 5
Overload protection / short-circuit-proof / temperature monitoring	yes yes / yes
DIN VDE-determinations	VDE 0110, 0160 in parts
Position of installation / mounting	can be snapped, addable
Mode of connection: screw terminal	single wire 4mm ² , fine wire 2,5mm ²
Dimensions: W x D x H	22,5mm x 75mm x 102mm