

# HDBT 1-3/16

Heavy Duty Ball Transfers



HDBT 1-3/16 CS

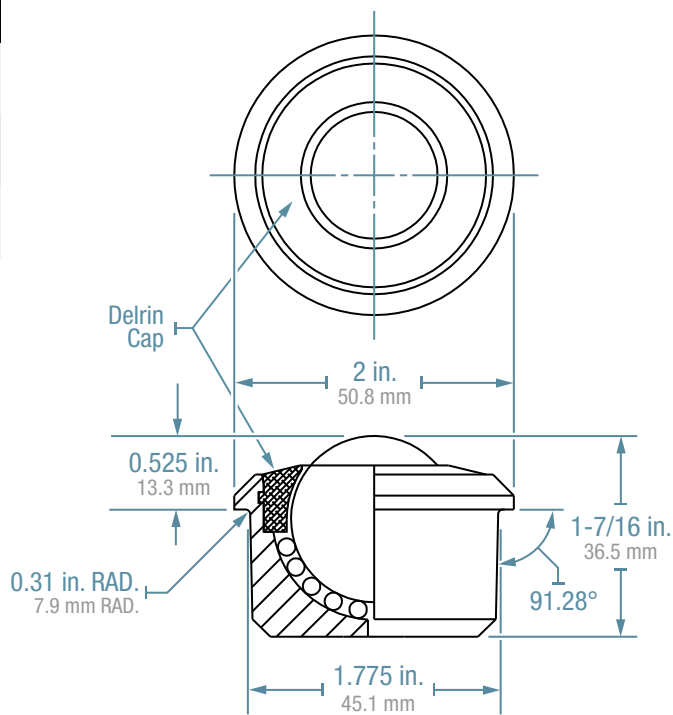
Additional ball materials available

| Part Number              | Housing Mat.    | Ball Material   | Load Cap. |
|--------------------------|-----------------|-----------------|-----------|
| <b>HDBT 1-3/16 CS</b>    | Carbon Steel    | Carbon Steel    | 550 lbs.  |
| <b>HDBT 1-3/16 CS/SS</b> | Carbon Steel    | Stainless Steel | 550 lbs.  |
| <b>HDBT 1-3/16 SS</b>    | Stainless Steel | Stainless Steel | 550 lbs.  |

### 550 LB. CAPACITY

- Integral flange at top allows unit to be dropped into 1-13/16" diameter hole.
- 1-3/16" Main ball rotates on 1/8" support balls.
- Carbon steel ball support cup is machined from solid steel and is hardened and plated.
- Available in stainless steel for additional corrosion resistance.

For 850 lbs. load capacity and additional material options, see our Air Cargo line card.



All product designs subject to change, please verify accuracy of dimensions.

# HDBTM 1-3/16

Heavy Duty Ball Transfers



HDBTM 1-3/16 SS

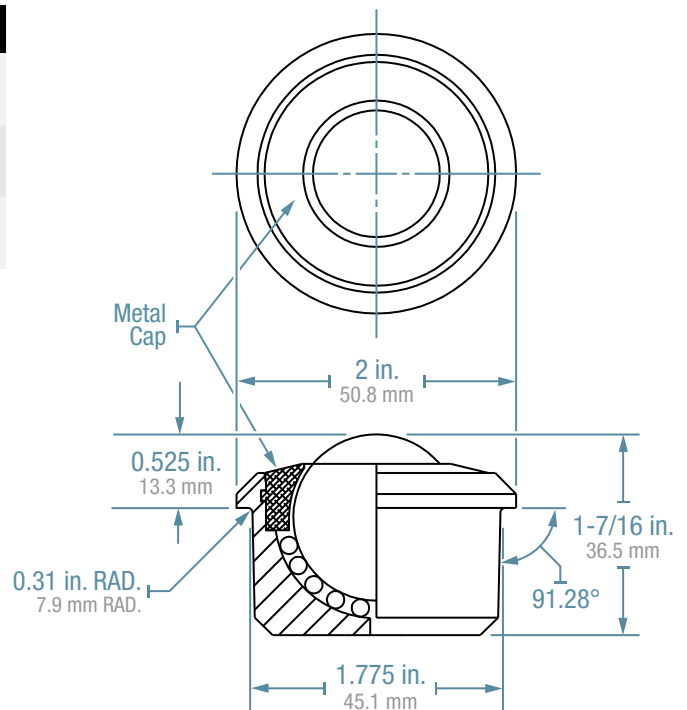
Additional ball materials available

| Part Number               | Housing Mat.    | Ball Material   | Load Cap. |
|---------------------------|-----------------|-----------------|-----------|
| <b>HDBTM 1-3/16 CS</b>    | Carbon Steel    | Carbon Steel    | 750 lbs.  |
| <b>HDBTM 1-3/16 CS/SS</b> | Carbon Steel    | Stainless Steel | 750 lbs.  |
| <b>HDBTM 1-3/16 SS</b>    | Stainless Steel | Stainless Steel | 750 lbs.  |

### 750 LB. CAPACITY

- Metal cap for additional strength and durability.
- Integral flange at top allows unit to be dropped into 1-13/16" diameter hole.
- 1-3/16" Main ball rotates on 1/8" support balls.
- Carbon steel ball support cup is machined from solid steel and is hardened and plated.
- Retaining ring is solid metal.
- Available in stainless steel for additional corrosion resistance.

For 850 lbs. load capacity and additional material options, see our Air Cargo line card.



All product designs subject to change, please verify accuracy of dimensions.

PS1509

# HDBT 1-3/16 IR

Heavy Duty Ball Transfers



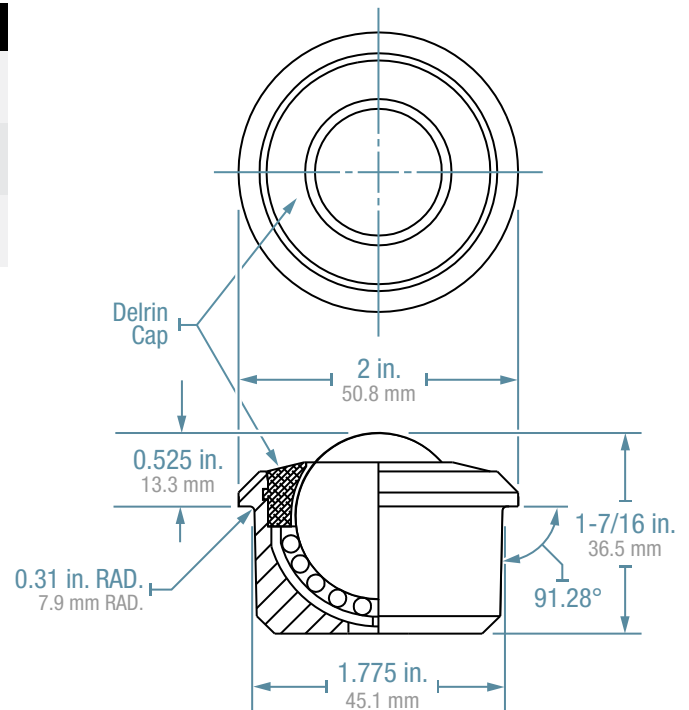
HDBT 1-3/16 SS IR

Additional ball materials available

| Part Number                 | Housing Mat.    | Ball Material   | Load Cap. |
|-----------------------------|-----------------|-----------------|-----------|
| <b>HDBT 1-3/16 CS IR</b>    | Carbon Steel    | Carbon Steel    | 850 lbs.  |
| <b>HDBT 1-3/16 CS/SS IR</b> | Carbon Steel    | Stainless Steel | 850 lbs.  |
| <b>HDBT 1-3/16 SS IR</b>    | Stainless Steel | Stainless Steel | 850 lbs.  |

### 850 LB. CAPACITY

- Stainless steel inner race for additional load capacity.
- Integral flange at top allows unit to be dropped into 1-13/16" diameter hole.
- 1-3/16" Main ball rotates on 1/8" support balls.
- Carbon steel housing is machined from solid steel and plated.
- Available in stainless steel for additional corrosion resistance.



All product designs subject to change, please verify accuracy of dimensions.

PS1509

# SHDBT 1-3/16

Heavy Duty Ball Transfers



SHDBT 1-3/16 SS



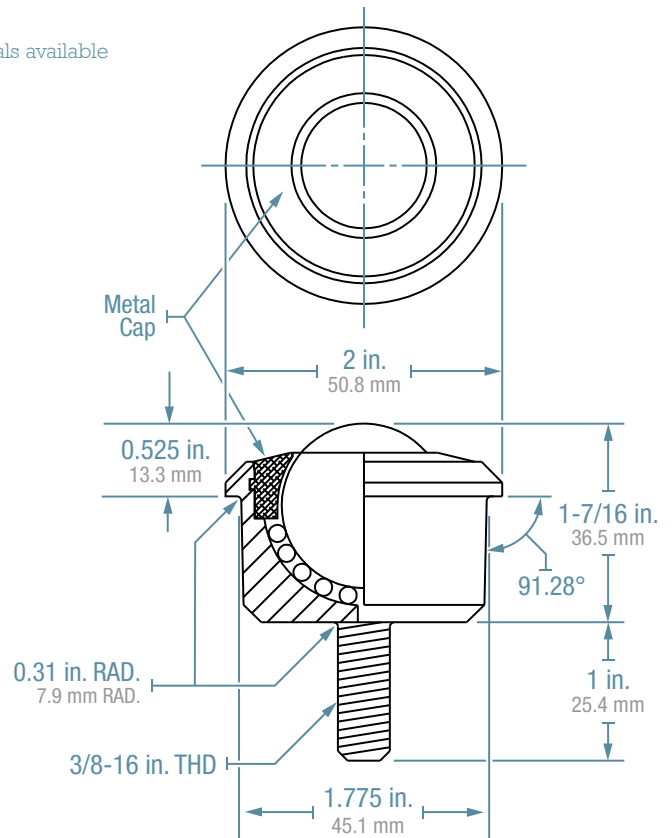
SHDBTM 1-3/16 CS

Additional ball materials available

| Part Number               | Housing Mat.    | Ball Material   | Load Cap. |
|---------------------------|-----------------|-----------------|-----------|
| <b>SHDBT 1-3/16 CS</b>    | Carbon Steel    | Carbon Steel    | 750 lbs.  |
| <b>SHDBT 1-3/16 CS/SS</b> | Carbon Steel    | Stainless Steel | 750 lbs.  |
| <b>SHDBT 1-3/16 SS</b>    | Stainless Steel | Stainless Steel | 750 lbs.  |

### STUD MOUNTED, 750 LB. CAPACITY

- Metal-cap standard.
- 1-3/16" Main ball rotates on 1/8" support balls.
- Carbon steel ball support cup is machined from solid steel and is hardened and plated.
- Available in stainless steel for additional corrosion resistance.



All product designs subject to change, please verify accuracy of dimensions.

PS1509

# Hudson

## BEARINGS

# SBT 1

Stud-Mounted Ball Transfers



SBT 1



NSBT 1

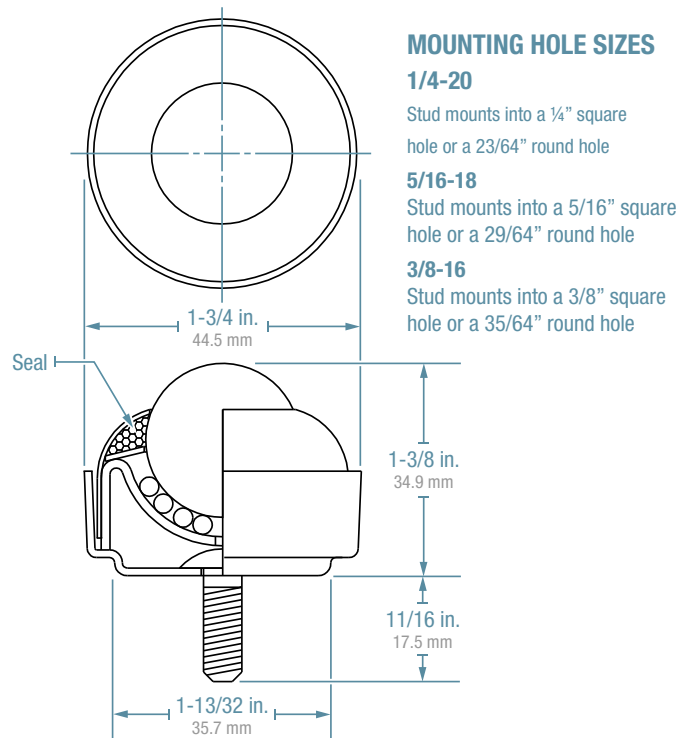
Additional ball materials available

| Part Number        | Housing Mat.    | Ball Material   | Load Cap. |
|--------------------|-----------------|-----------------|-----------|
| <b>SBT 1 CS</b>    | Carbon Steel    | Carbon Steel    | 75 lbs.   |
| <b>NSBT 1 CS</b>   | Carbon Steel    | Nylon           | 75 lbs.   |
| <b>SBT 1 CS/SS</b> | Carbon Steel    | Stainless Steel | 75 lbs.   |
| <b>SBT 1 SS</b>    | Stainless Steel | Stainless Steel | 75 lbs.   |

### STUD-MOUNTED, ALL-STEEL

- Threaded stud sizes available: 1/4-20, 5/16-18, 3/8-16
- 1" Main ball rotates on 1/8" support balls.
- Ball support cup is hardened and plated.
- Protective cover assures low torque and longevity.

NOTE: Also available with a base to ball height of 1-17/32" in 1/4" stud only (Part number DSBT 1)



All product designs subject to change, please verify accuracy of dimensions.

PS1509

# Hudson

## BEARINGS

### SBT 1-1/2

Stud-Mounted Ball Transfers



SBT 1-1/2



NSBT 1-1/2

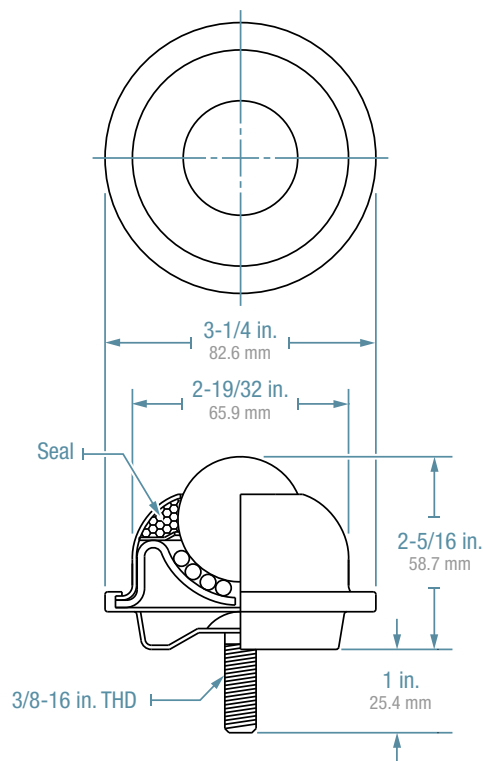
Additional ball materials available

| Part Number            | Housing Mat. | Ball Material   | Load Cap. |
|------------------------|--------------|-----------------|-----------|
| <b>SBT 1-1/2 CS</b>    | Carbon Steel | Carbon Steel    | 250 lbs.  |
| <b>NSBT 1-1/2 CS</b>   | Carbon Steel | Nylon           | 250 lbs.  |
| <b>SBT 1-1/2 CS/SS</b> | Carbon Steel | Stainless Steel | 250 lbs.  |

#### STUD-MOUNTED, ALL-STEEL, FOR HEAVY-DUTY APPLICATIONS

- Threaded stud size: 3/8-16.
- 1-1/2" Main ball rotates on 3/16" support balls.
- Ball support cup is hardened and plated.
- Protective cover assures low torque and longevity.

NOTE: Neoprene cushion available to permit vertical deflection and assist with uniform load distribution (Part number CSBT 1-1/2)



All product designs subject to change, please verify accuracy of dimensions.

# Hudson

## BEARINGS

# SMBT 5/8

Stud-Mounted Ball Transfers



SMBT 5/8



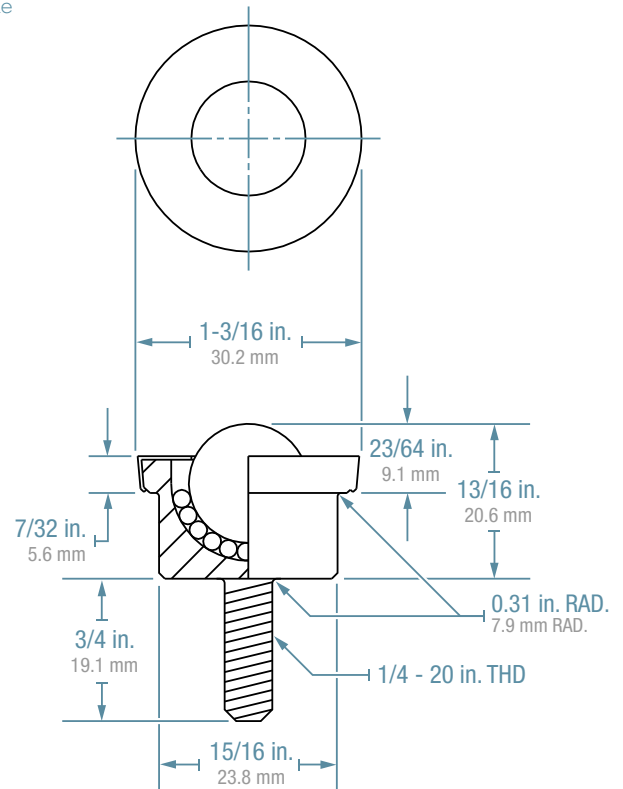
NSMBT 5/8

Additional ball materials available

| Part Number           | Housing Mat.    | Ball Material   | Load Cap. |
|-----------------------|-----------------|-----------------|-----------|
| <b>SMBT 5/8 CS</b>    | Carbon Steel    | Carbon Steel    | 125 lbs.  |
| <b>NSMBT 5/8 CS</b>   | Carbon Steel    | Nylon           | 125 lbs.  |
| <b>SMBT 5/8 CS/SS</b> | Carbon Steel    | Stainless Steel | 125 lbs.  |
| <b>SMBT 5/8 SS</b>    | Stainless Steel | Stainless Steel | 125 lbs.  |

### STUD-MOUNTED, SOLID MACHINED, ALL-STEEL

- Carbon steel ball support cup is machined from solid steel and is hardend and plated.
- 5/8" Main ball rotates on 3/32" support balls.
- Available in stainless steel for additional corrosion resistance.



All product designs subject to change, please verify accuracy of dimensions.

PS1509



# SMBT 1

Stud-Mounted Ball Transfers



SMBT 1



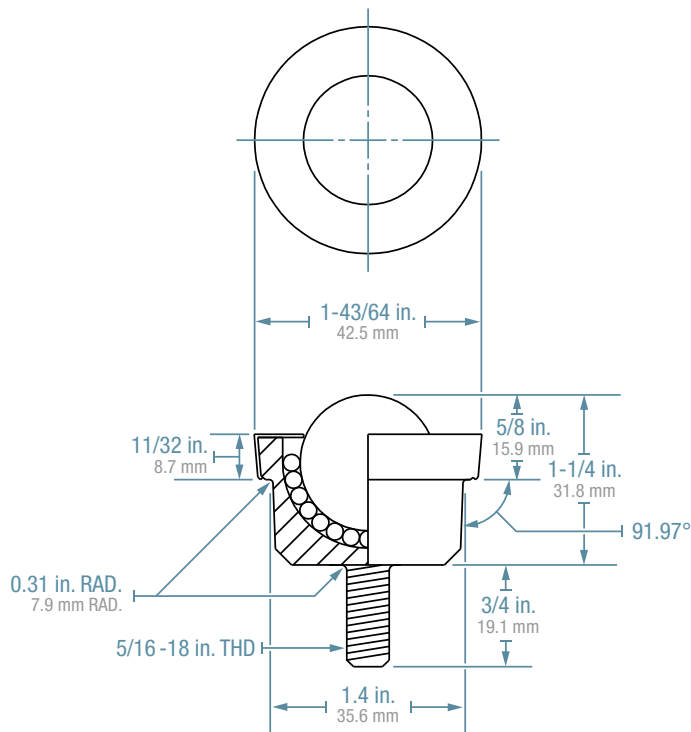
NSMBT 1 CS

Additional ball materials available

| Part Number         | Housing Mat.    | Ball Material   | Load Cap. |
|---------------------|-----------------|-----------------|-----------|
| <b>SMBT 1 CS</b>    | Carbon Steel    | Carbon Steel    | 200 lbs.  |
| <b>NSMBT 1 CS</b>   | Carbon Steel    | Nylon           | 200 lbs.  |
| <b>SMBT 1 CS/SS</b> | Carbon Steel    | Stainless Steel | 200 lbs.  |
| <b>SMBT 1SS</b>     | Stainless Steel | Stainless Steel | 200 lbs.  |

### STUD-MOUNTED, SOLID MACHINED, ALL-STEEL

- Carbon steel ball support cup is machined from solid steel and is hardend and plated.
- 1" Main ball rotates on 1/8" support balls.
- Available in stainless steel for additional corrosion resistance.



All product designs subject to change, please verify accuracy of dimensions.

PS1509



# Hudson

## BEARINGS

### PBT 1-1/2

Pipe-Mounted Ball Transfers



PBT 1-1/2



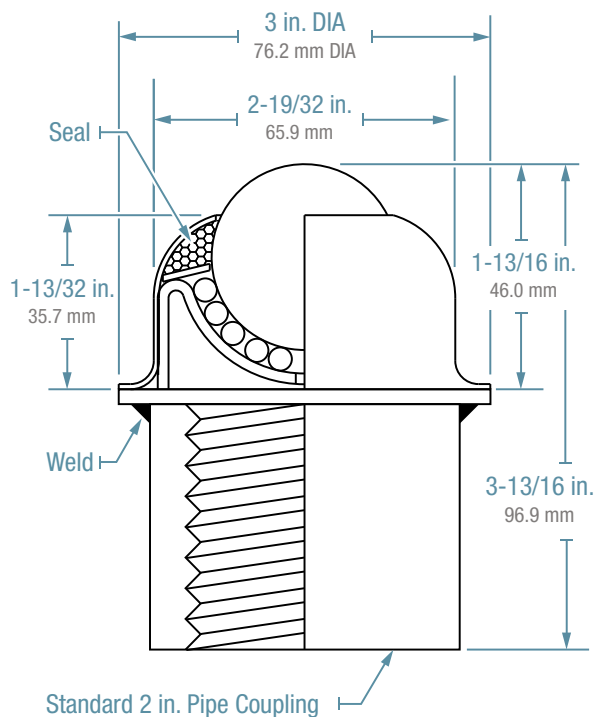
NPBT 1-1/2

Additional ball materials available

| Part Number            | Housing Mat. | Ball Material   | Load Cap. |
|------------------------|--------------|-----------------|-----------|
| <b>PBT 1-1/2 CS</b>    | Carbon Steel | Carbon Steel    | 250 lbs.  |
| <b>NPBT 1-1/2 CS</b>   | Carbon Steel | Nylon           | 250 lbs.  |
| <b>PBT 1-1/2 CS/SS</b> | Carbon Steel | Stainless Steel | 250 lbs.  |

#### PIPE-MOUNTED

- Allows positioning on a 2" pipe pedestal in front of shears or press breaks.
- 1-1/2" Main ball rotates on 3/16" support balls.
- Ball transfer unit is welded to a standard carbon steel 2" pipe coupling.
- Ball support cup is hardened and plated.
- Protective cover assures low torque and longevity.
- Available with stainless steel balls for additional corrosion resistance.



All product designs subject to change, please verify accuracy of dimensions.

# Hudson

## BEARINGS

# BT 1

Flange-Mounted Ball Transfers



BT 1



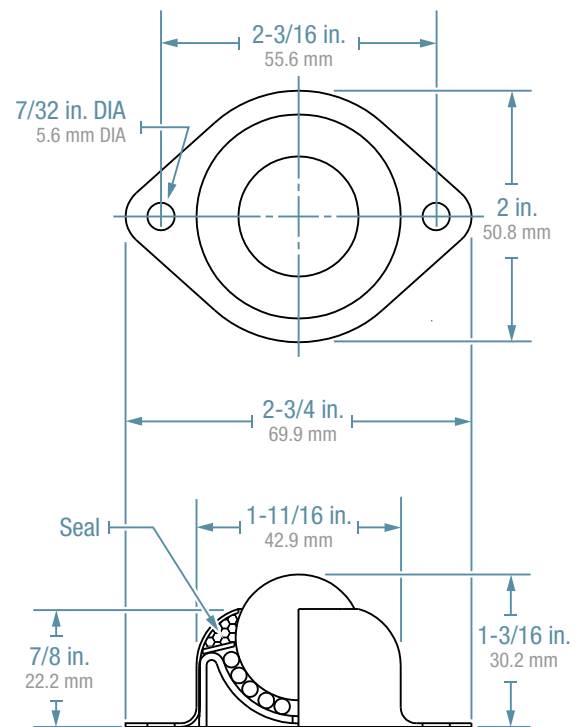
NBT 1

Additional ball materials available

| Part Number       | Housing Mat.    | Ball Material   | Load Cap. |
|-------------------|-----------------|-----------------|-----------|
| <b>BT 1 CS</b>    | Carbon Steel    | Carbon Steel    | 75 lbs.   |
| <b>NBT 1 CS</b>   | Carbon Steel    | Nylon           | 75 lbs.   |
| <b>BT 1 CS/SS</b> | Carbon Steel    | Stainless Steel | 75 lbs.   |
| <b>BT 1 SS</b>    | Stainless Steel | Stainless Steel | 75 lbs.   |

### TWO-HOLE, FLANGE MOUNTED, ALL-STEEL

- 1" Main ball rotates on 1/8" support balls.
- Ball support cup is hardened and plated.
- Protective cover assures low torque and longevity.
- Available in stainless steel for additional corrosion resistance.



All product designs subject to change, please verify accuracy of dimensions.

# Hudson

## BEARINGS

### BT 1-1/2

Flange-Mounted Ball Transfers



BT 1-1/2



NBT 1-1/2

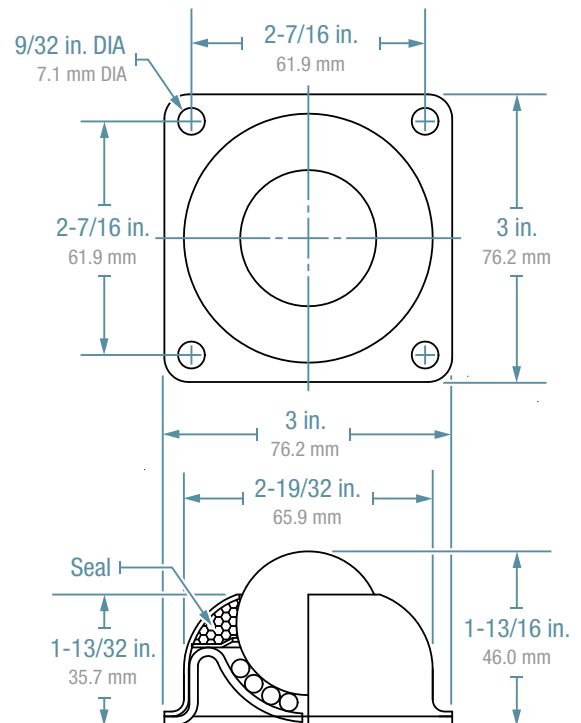
Additional ball materials available

| Part Number           | Housing Mat.    | Ball Material   | Load Cap. |
|-----------------------|-----------------|-----------------|-----------|
| <b>BT 1-1/2 CS</b>    | Carbon Steel    | Carbon Steel    | 250 lbs.  |
| <b>NBT 1-1/2 CS</b>   | Carbon Steel    | Nylon           | 250 lbs.  |
| <b>BT 1-1/2 CS/SS</b> | Carbon Steel    | Stainless Steel | 250 lbs.  |
| <b>BT 1-1/2 SS</b>    | Stainless Steel | Stainless Steel | 250 lbs.  |

#### FOUR-HOLE, FLANGE MOUNTED, ALL-STEEL

- 1-1/2" Main ball rotates on 3/16" support balls.
- Ball support cup is hardened and plated.
- Protective cover assures low torque and longevity.
- Available in stainless steel for additional corrosion resistance.

NOTE: Neoprene cushion available to permit vertical deflection and assist with uniform load distribution. (Part number CBT 1-1/2)



All product designs subject to change, please verify accuracy of dimensions.

# LPBT 1

Flange-Mounted Ball Transfers



LPBT 1



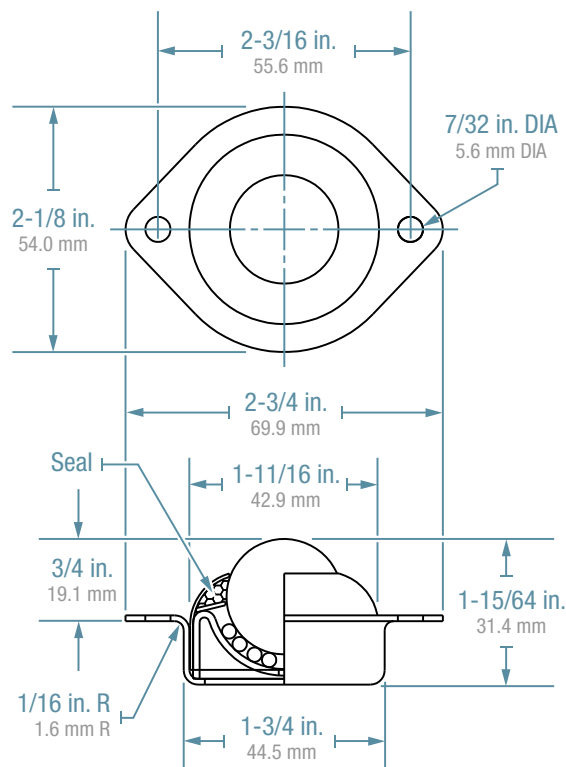
NLPBT 1

Additional ball materials available

| Part Number         | Housing Mat.    | Ball Material   | Load Cap. |
|---------------------|-----------------|-----------------|-----------|
| <b>LPBT 1 CS</b>    | Carbon Steel    | Carbon Steel    | 75 lbs.   |
| <b>NLPBT 1 CS</b>   | Carbon Steel    | Nylon           | 75 lbs.   |
| <b>LPBT 1 CS/SS</b> | Carbon Steel    | Stainless Steel | 75 lbs.   |
| <b>LPBT 1 SS</b>    | Stainless Steel | Stainless Steel | 75 lbs.   |

### LOW PROFILE, TWO-HOLE, FLANGE MOUNTED, ALL-STEEL

- Designed to be recessed into the surface of the application in a 1-7/8" hole.
- 1" Main ball rotates on 1/8" support balls.
- Ball support cup is hardened and plated.
- Protective cover assures low torque and longevity.
- Available in stainless steel for additional corrosion resistance.



All product designs subject to change, please verify accuracy of dimensions.

# Hudson

## BEARINGS

# FLBT

Flangeless Ball Transfers



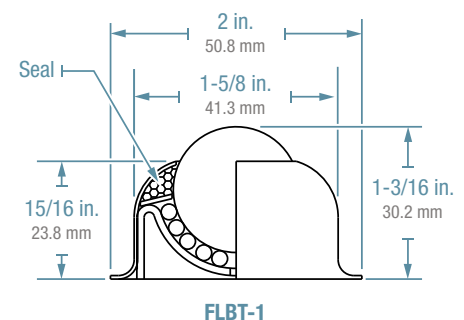
FLBT 1-1/2 CS



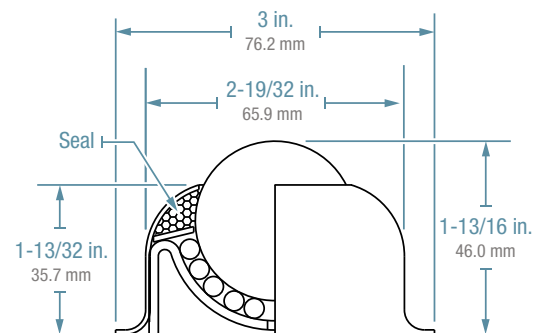
NFLBT 1-1/2 CS

Additional ball materials available

| Part Number             | Housing Mat. | Ball Material   | Load Cap. |
|-------------------------|--------------|-----------------|-----------|
| <b>FLBT 1 CS</b>        | Carbon Steel | Carbon Steel    | 75 lbs.   |
| <b>NFLBT 1 CS</b>       | Carbon Steel | Nylon           | 75 lbs.   |
| <b>FLBT 1 CS/SS</b>     | Carbon Steel | Stainless Steel | 75 lbs.   |
| <b>FLBT 1-1/2 CS</b>    | Carbon Steel | Carbon Steel    | 250 lbs.  |
| <b>NFLBT 1-1/2 CS</b>   | Carbon Steel | Nylon           | 250 lbs.  |
| <b>FLBT 1-1/2 CS/SS</b> | Carbon Steel | Stainless Steel | 250 lbs.  |



FLBT-1



FLBT-1-1/2

### FLANGELESS, ALL STEEL

- FLBT 1: 1" Main ball rotates on 1/8" support balls.
- FLBT 1-1/2: 1-1/2" Main ball rotates on 3/16" support balls.
- Ball support cup is hardened and plated.
- Protective cover assures low torque and longevity.
- Available in stainless steel for additional corrosion resistance.

All product designs subject to change, please verify accuracy of dimensions.

# MBT 5/8

Drop-In Style Ball Transfers



MBT 5/8



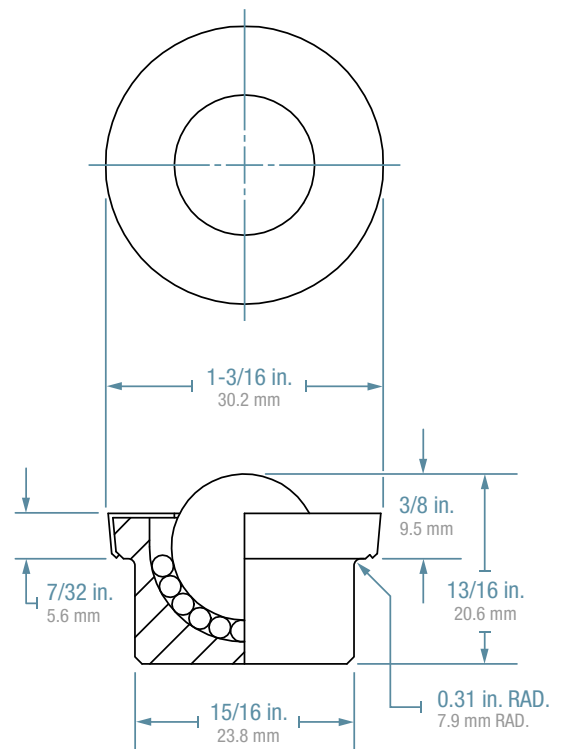
NMBT 5/8

Additional ball materials available

| Part Number          | Housing Mat.    | Ball Material   | Load Cap. |
|----------------------|-----------------|-----------------|-----------|
| <b>MBT 5/8 CS</b>    | Carbon Steel    | Carbon Steel    | 125 lbs.  |
| <b>NMBT 5/8 CS</b>   | Carbon Steel    | Nylon           | 125 lbs.  |
| <b>MBT 5/8 CS/SS</b> | Carbon Steel    | Stainless Steel | 125 lbs.  |
| <b>MBT 5/8 SS</b>    | Stainless Steel | Stainless Steel | 125 lbs.  |

### SOLID MACHINED, ALL-STEEL

- Integral flange at top allows unit to be dropped into 1" diameter hole.
- 5/8" Main ball rotates on 3/32" support balls.
- Carbon steel ball support cup is machined from solid steel and is hardened and plated.
- Plated steel cover.
- Available in stainless steel for additional corrosion resistance.



All product designs subject to change, please verify accuracy of dimensions.

PS1509



# MBT 1

Drop-In Style Ball Transfers



MBT 1



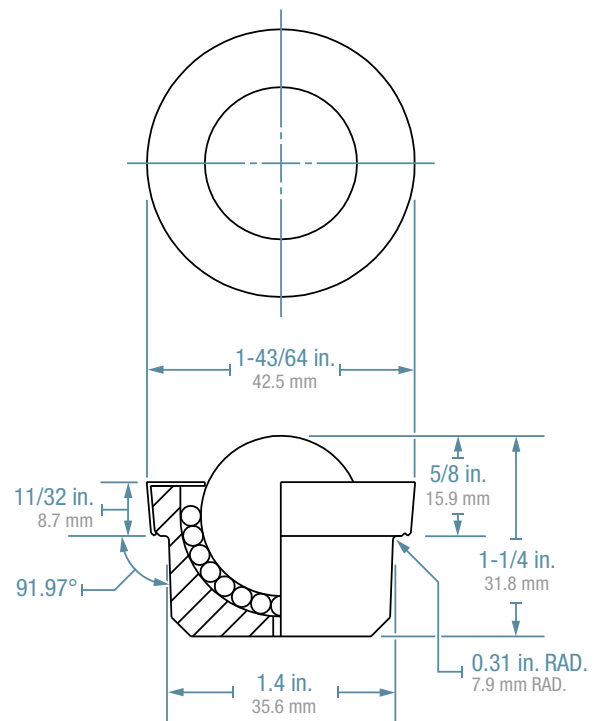
NMBT 1

Additional ball materials available

| Part Number       | Housing Mat.    | Ball Material   | Load Cap. |
|-------------------|-----------------|-----------------|-----------|
| <b>MBT 1CS</b>    | Carbon Steel    | Carbon Steel    | 200 lbs.  |
| <b>NMBT 1CS</b>   | Carbon Steel    | Nylon           | 200 lbs.  |
| <b>MBT 1CS/SS</b> | Carbon Steel    | Stainless Steel | 200 lbs.  |
| <b>MBT 1SS</b>    | Stainless Steel | Stainless Steel | 200 lbs.  |

### SOLID MACHINED, ALL-STEEL

- Integral flange at top allows unit to be dropped into 1-13/32" diameter hole.
- 1" Main ball rotates on 1/8" support balls.
- Carbon steel ball support cup is machined from solid steel and is hardened and plated.
- Plated steel cover.
- Available in stainless steel for additional corrosion resistance.



All product designs subject to change, please verify accuracy of dimensions.

PS1509



# Hudson

## BEARINGS

### FSBT

Flying Saucer Ball Transfers



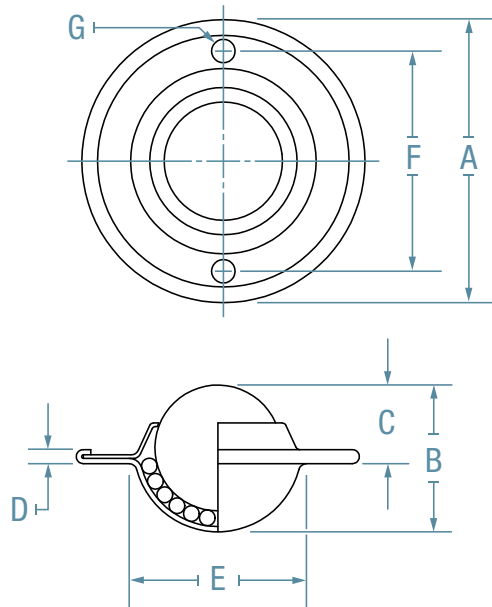
FSBT 1-1/2



FSBT 5/8



NFSBT 1



All product designs subject to change, please verify accuracy of dimensions.

Additional ball materials available

| Part Number             | Housing Mat. | Ball Material | Load Cap. | Main Ball        | A                  | B                  | C                 | D              | E                | F                | G              |
|-------------------------|--------------|---------------|-----------|------------------|--------------------|--------------------|-------------------|----------------|------------------|------------------|----------------|
| <b>FSBT 5/8 CS</b>      | Carbon Steel | Carbon Steel  | 40 lbs.   | 5/8"<br>15.9mm   | 1-11/16"<br>42.9mm | 3/4"<br>19.1mm     | 3/8"<br>9.5mm     | 5/32"<br>4.0mm | 31/32"<br>24.6mm | 1-1/4"<br>31.8mm | 9/64"<br>3.6mm |
| <b>NFSBT 5/8 CS</b>     | Carbon Steel | Nylon         | 40 lbs.   | 5/8"<br>15.9mm   | 1-11/16"<br>42.9mm | 3/4"<br>19.1mm     | 3/8"<br>9.5mm     | 5/32"<br>4.0mm | 31/32"<br>24.6mm | 1-1/4"<br>31.8mm | 9/64"<br>3.6mm |
| <b>FSBT 5/8 CS/SS</b>   | Carbon Steel | Stainless     | 40 lbs.   | 5/8"<br>15.9mm   | 1-11/16"<br>42.9mm | 3/4"<br>19.1mm     | 3/8"<br>9.5mm     | 5/32"<br>4.0mm | 31/32"<br>24.6mm | 1-1/4"<br>31.8mm | 9/64"<br>3.6mm |
| <b>FSBT 1CS</b>         | Carbon Steel | Carbon Steel  | 75 lbs.   | 1"<br>25.4mm     | 2-1/4"<br>57.2mm   | 1-7/32"<br>31.0mm  | 5/8"<br>15.9mm    | 3/16"<br>4.8mm | 1-1/2"<br>38.1mm | 1-3/4"<br>44.5mm | 3/16"<br>4.8mm |
| <b>NFSBT 1CS</b>        | Carbon Steel | Nylon         | 75 lbs.   | 1"<br>25.4mm     | 2-1/4"<br>57.2mm   | 1-7/32"<br>31.0mm  | 5/8"<br>15.9mm    | 3/16"<br>4.8mm | 1-1/2"<br>38.1mm | 1-3/4"<br>44.5mm | 3/16"<br>4.8mm |
| <b>FSBT 1 CS/SS</b>     | Carbon Steel | Stainless     | 75 lbs.   | 1"<br>25.4mm     | 2-1/4"<br>57.2mm   | 1-7/32"<br>31.0mm  | 5/8"<br>15.9mm    | 3/16"<br>4.8mm | 1-1/2"<br>38.1mm | 1-3/4"<br>44.5mm | 3/16"<br>4.8mm |
| <b>FSBT 1-1/2 CS</b>    | Carbon Steel | Carbon Steel  | 200 lbs.  | 1-1/2"<br>38.1mm | 3-21/32"<br>92.9mm | 1-13/16"<br>46.0mm | 1-9/64"<br>29.0mm | 9/32"<br>7.1mm | 2"<br>50.8mm     | 2-3/4"<br>69.9mm | 9/32"<br>7.1mm |
| <b>NFSBT 1-1/2 CS</b>   | Carbon Steel | Nylon         | 200 lbs.  | 1-1/2"<br>38.1mm | 3-21/32"<br>92.9mm | 1-13/16"<br>46.0mm | 1-9/64"<br>29.0mm | 9/32"<br>7.1mm | 2"<br>50.8mm     | 2-3/4"<br>69.9mm | 9/32"<br>7.1mm |
| <b>FSBT 1-1/2 CS/SS</b> | Carbon Steel | Stainless     | 200 lbs.  | 1-1/2"<br>38.1mm | 3-21/32"<br>92.9mm | 1-13/16"<br>46.0mm | 1-9/64"<br>29.0mm | 9/32"<br>7.1mm | 2"<br>50.8mm     | 2-3/4"<br>69.9mm | 9/32"<br>7.1mm |

#### VERSATILE, COMPACT, ALL-STEEL

- Can be recessed into the surface of the application forming a smooth, multi-directional rolling surface.
- Precision-formed steel housing.

- Integral mounting holes for ease of installation.
- Available with stainless steel balls for additional corrosion resistance.

# Hudson Hauler



Top View



Bottom View

Additional ball materials available

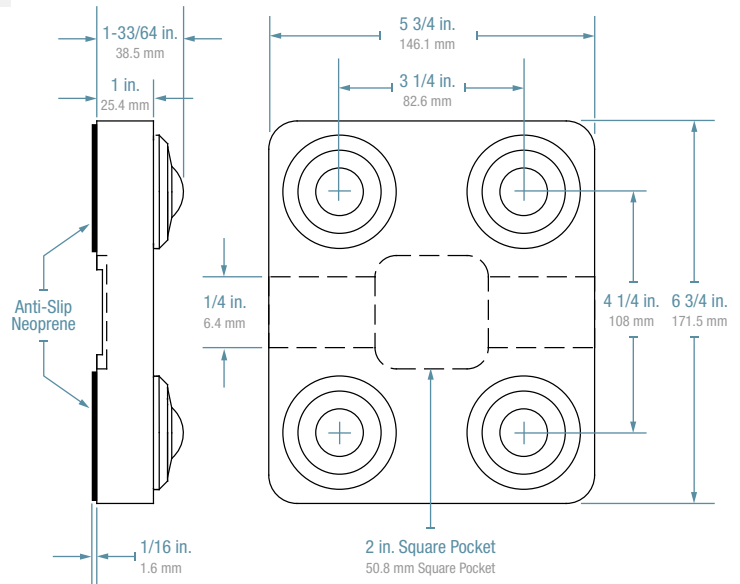
| Part Number          | Housing Mat.              | Dimensions                     | Load Cap.  |
|----------------------|---------------------------|--------------------------------|------------|
| <b>Hudson Hauler</b> | Anodized<br>6061 aluminum | 6 3/4 x 5 3/4 x<br>1 33/64 in. | 2,400 lbs. |

## HEAVY LOAD DOLLY

Simplify moving everything from heavy equipment to shelving units with the Hudson Hauler and the Hudson Super Mover. Their low profile design minimizes required lift while allowing for easy omni-directional movement.

## Features

- 2400 LB load capacity per unit.
- Manufactured in the USA.
- Accommodates leg mounted or flat fixtures.
- Utilizes Hudson Bearings Heavy Duty Ball Transfers with stainless steel main and support balls.
- Neoprene surface.
- Plate made from anodized 6061 aluminum.



All product designs subject to change, please verify accuracy of dimensions.

PS1509

# Hudson Super Mover



Top View



Bottom View

Additional ball materials available

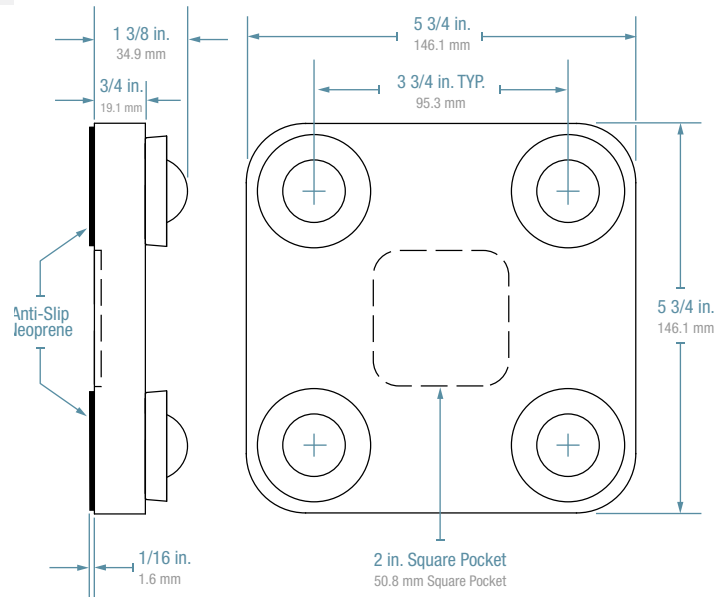
| Part Number               | Housing Mat.           | Dimensions                | Load Cap. |
|---------------------------|------------------------|---------------------------|-----------|
| <b>Hudson Super Mover</b> | Anodized 6061 aluminum | 5 3/4 x 5 3/4 x 1 3/8 in. | 500 lbs.  |

## HEAVY LOAD DOLLY

Simplify moving everything from heavy equipment to shelving units with the Hudson Hauler and the Hudson Super Mover. Their low profile design minimizes required lift while allowing for easy omni-directional movement.

## Features

- 500 LB load capacity per unit.
- Manufactured in the USA.
- Accommodates leg mounted or flat fixtures.
- Utilizes Hudson Bearings Heavy Duty Ball Transfers with stainless steel main and support balls.
- Neoprene surface.
- Plate made from anodized 6061 aluminum.



All product designs subject to change, please verify accuracy of dimensions.

PS1509

# FHDBTM 1-3/16

Heavy Duty Ball Transfers



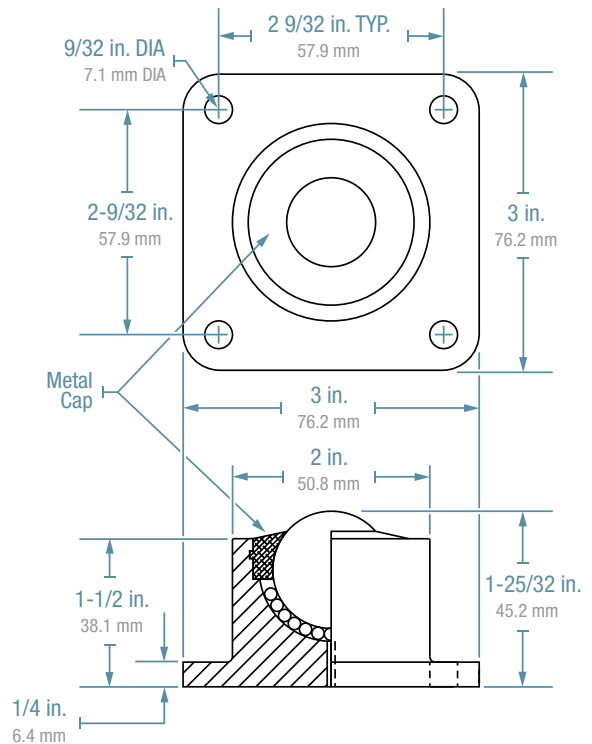
FHDBTM 1-3/16

Additional ball materials available

| Part Number                | Housing Mat.    | Ball Material   | Load Cap. |
|----------------------------|-----------------|-----------------|-----------|
| <b>FHDBTM 1-3/16 CS</b>    | Carbon Steel    | Carbon Steel    | 750 lbs.  |
| <b>FHDBTM 1-3/16 CS/SS</b> | Carbon Steel    | Stainless Steel | 750 lbs.  |
| <b>FHDBTM 1-3/16 SS</b>    | Stainless Steel | Stainless Steel | 750 lbs.  |

### 750 LB. CAPACITY

- Metal cap for additional strength and durability.
- Integral flange at top allows unit to be dropped into 1-13/16" diameter hole.
- 1-3/16" Main ball rotates on 1/8" support balls.
- Carbon steel ball support cup is machined from solid steel and is hardened and plated.
- Retaining ring is solid metal.
- Available in stainless steel for additional corrosion resistance.



All product designs subject to change, please verify accuracy of dimensions.

PS1509