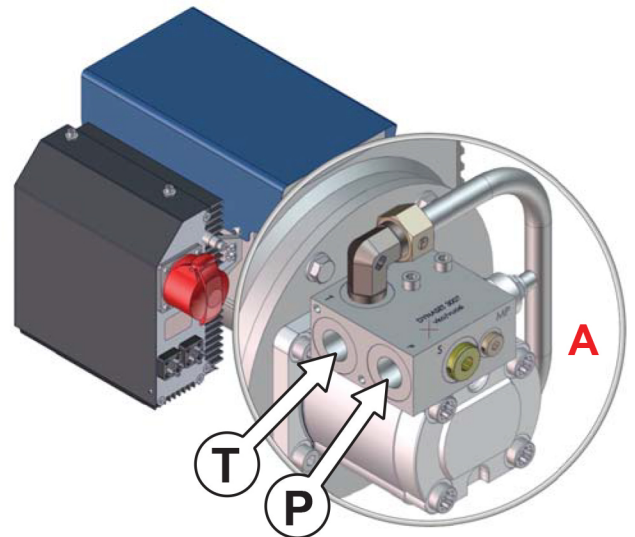
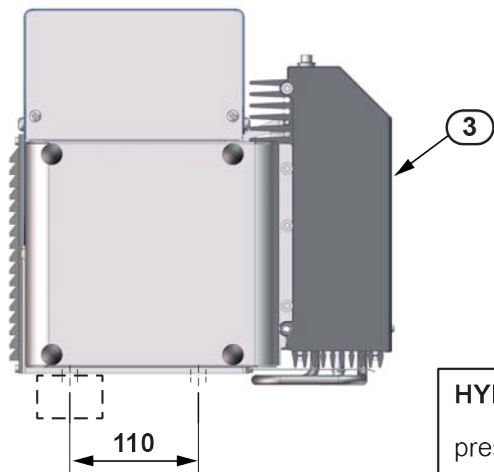
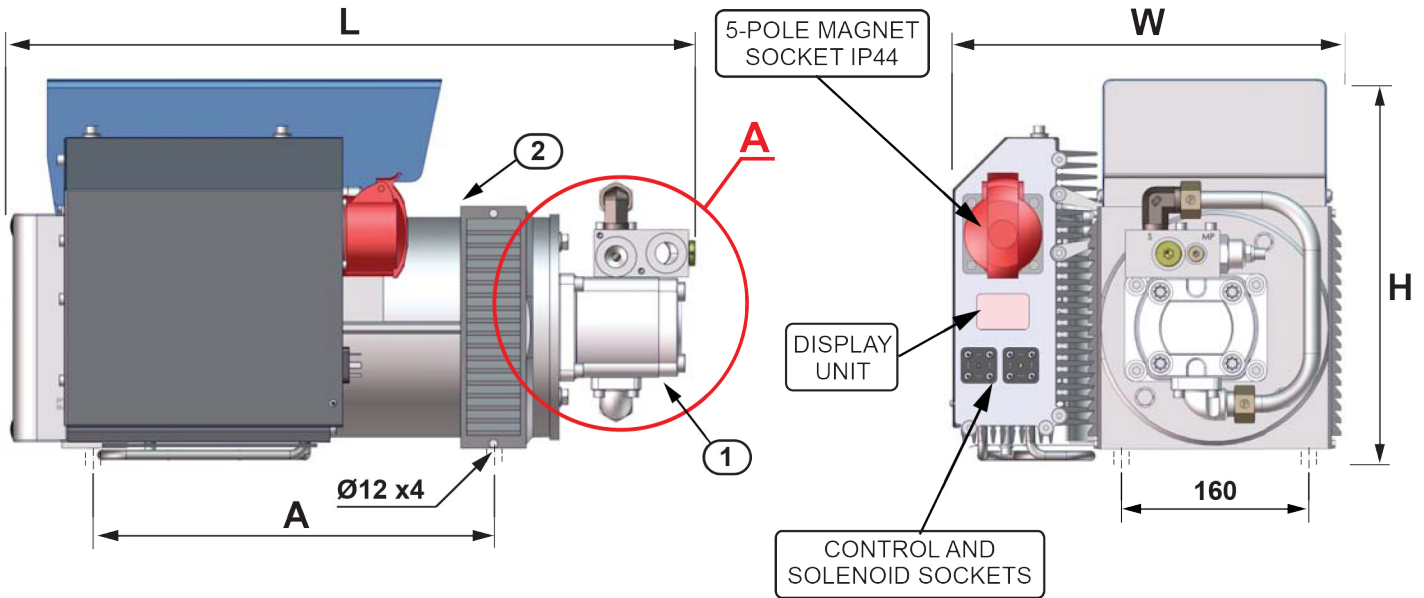




Dynaset hydraulic magnet generator HMG can be used in various applications; Recycling, cleaning and handling of scrap metal, castings, bars, plates, swarf, slag, etc.

Dynaset hydraulic magnet generator transforms the hydraulic power of a working machine into high quality magnet lifting power effectively to any magnet available. Working machine is always ready to lift and handling accurately ferrous materials. Automatic speed control with quick demagnetization guarantee safe working and long maintenance intervals.

### MAIN ASSEMBLY AND SPECIFICATIONS



HYDRAULIC PORTS	
pressure <b>P</b>	return <b>T</b>
BSP 1/2"	BSP 1/2"

	HYDRAULIC FLOW l/min		MAGNET POWER kW max	OPERAT. VOLTAGE U V±%	WEIGHT kg	DIMENSIONS mm			
	min	max				L	W	H	A
<b>HMGPRO 6kW-220VDC-33</b>	36	50	5,5	220 ±5	49	525	345	310	338
<b>HMGPRO10kW-220VDC-48</b>	51	70	9,5	220 ±5	63	575	345	310	338

Protection class IP23

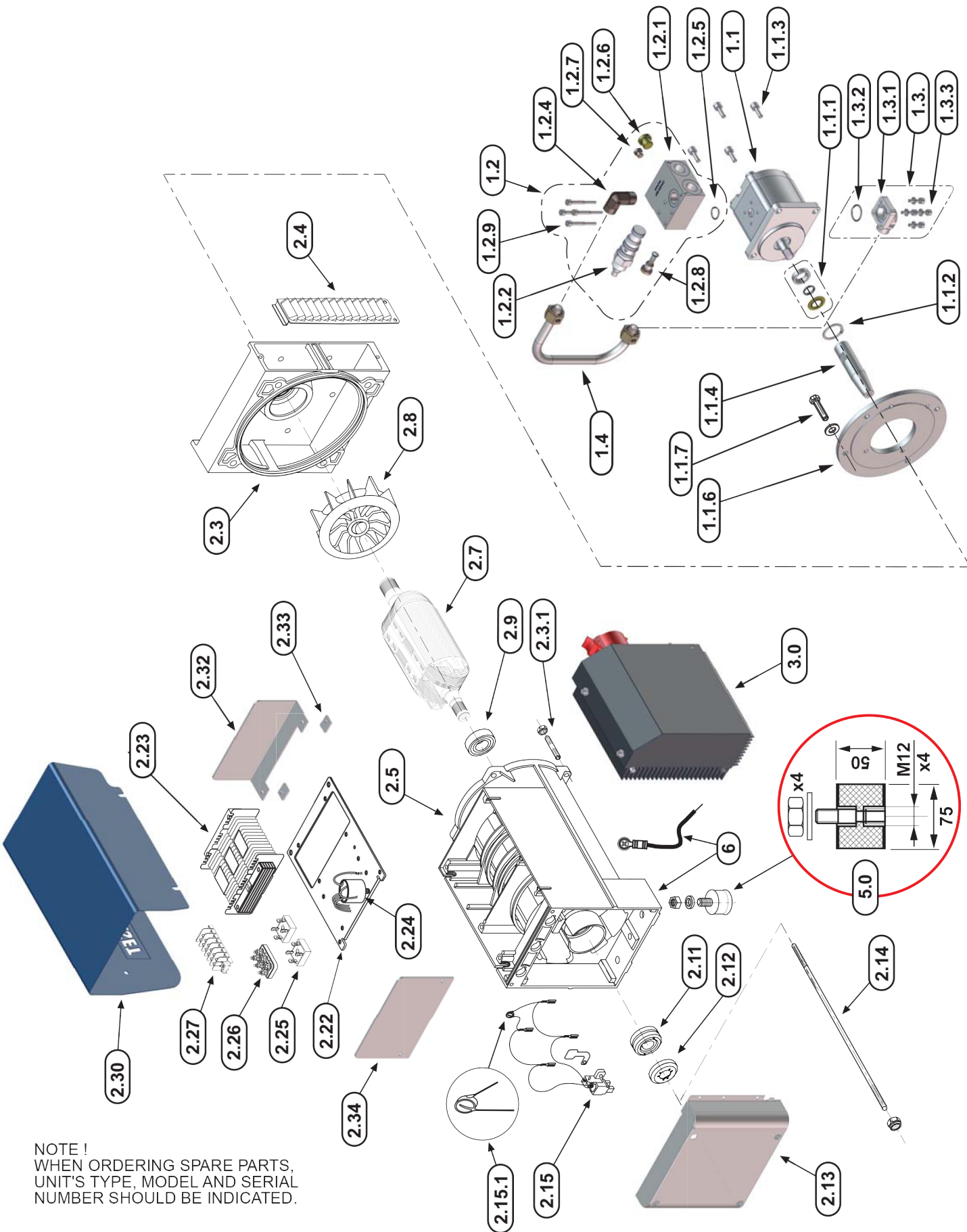


HYDRAULIC MAGNETIC GENERATOR, PRO SERIES

HMG PRO 6kW-220VDC-33

HMG PRO 10kW-220VDC-48

**BASIC ASSEMBLY**



NOTE !  
WHEN ORDERING SPARE PARTS,  
UNIT'S TYPE, MODEL AND SERIAL  
NUMBER SHOULD BE INDICATED.

**DYNASET****GENSCO**

HYDRAULIC MAGNETIC GENERATOR, PRO SERIES

HMG PRO 6kW-220VDC-33

HMG PRO10kW-220VDC-48

**PART LIST BASIC ASSEMBLY**

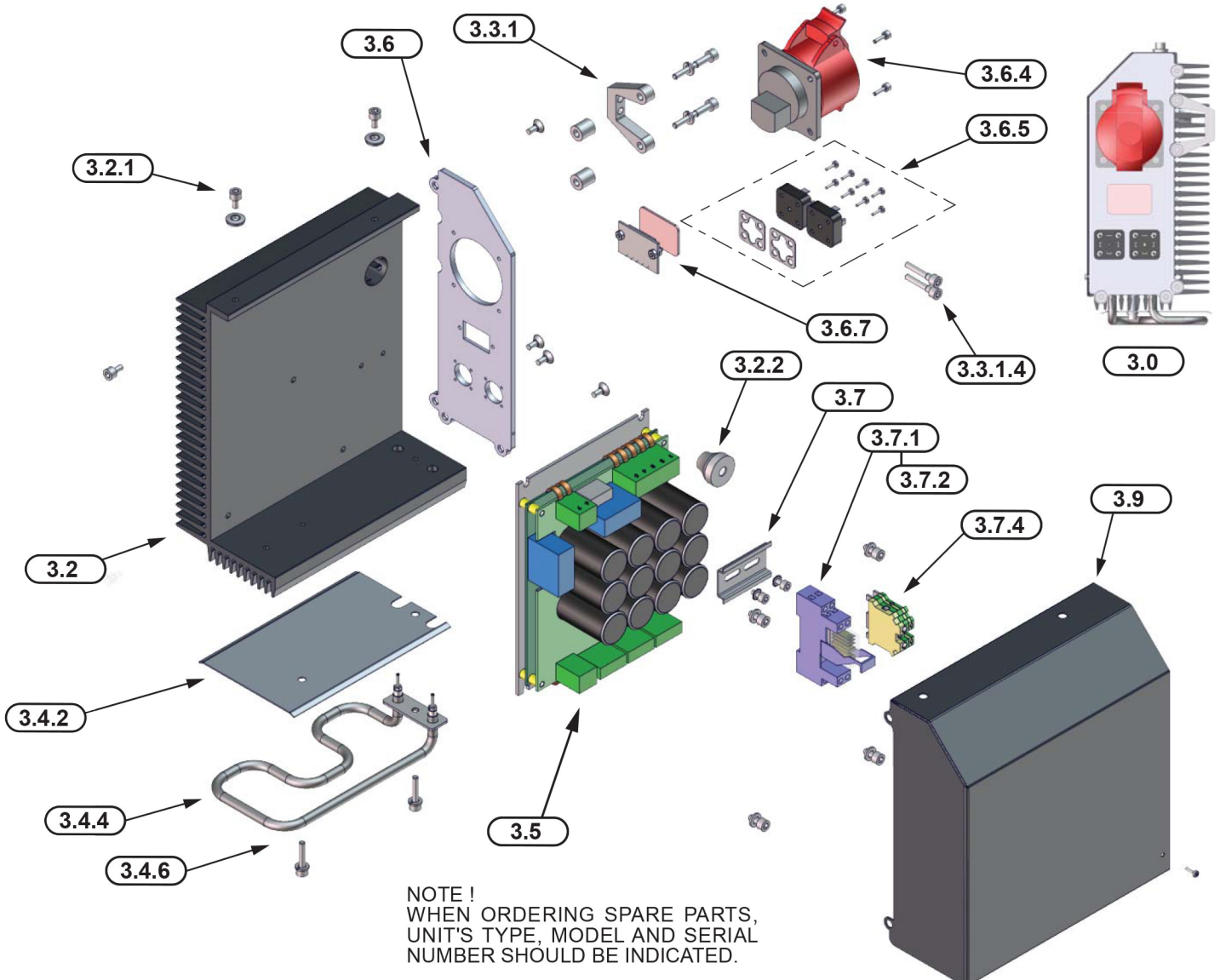
No	STOCK NUMBER	DESIGNATION	DETAILS	QUANTITY	
				6kW	10kW
1	D100104240 D100104250	<b>HYDRAULIC MOTOR ASSEMBLY</b> <b>HYDRAULIC MOTOR ASSEMBLY</b>		1	1
1.1	0700110040	HYDRAULIC MOTOR		1	
1.1	0700110050	HYDRAULIC MOTOR			1
1.1.1	V100103160	SHAFT SEAL, COMPLETE	17x30	1	
1.1.2	V100103300	LOCKING RING	30	1	
1.1.3	8500412100	ALLEN SCREW	M8x20	4	
1.1.4	0100000028	HG CHONE COUPLING	1:5,333/1:5 - 108	1	
1.1.6	0100006654	HG FLANGE	2R	1	
1.1.7	8500062700	HEX SCREW	M8x35	4	
	8500905800	NUT	M8 NYLOCK	4	
	8501126000	WASHER	8,4x17-1,6	4	
1.2	0709011181	RPM-VALVE BLOCK ASSEMBLY	3007D	1	
1.2.1	0700031435	RPM-VALVE BLOCK		1	
1.2.2	0700001144	RPM-CARTRIDGE	FLC-1	1	
1.2.4	1702015000	ELBOW FITTING	15L RK1/2 DIN	1	
1.2.5	2204104000	O-RING 17		1	
1.2.6	1702690000	PLUG	HF R1/8	1	
1.2.7	1702705000	PLUG	HF R3/8	1	
1.2.8	1309010276	CHECK VALVE COMPLETE	R1/4	1	
1.2.9	8500410000	ALLEN SCREW	M6x50	4	
1.3		RETURN LINE FLANGE COMPLETE	15L RK1/2 DIN	1	
1.3.1	8500412100	ALLEN SCREW	M8x20	4	
1.3.2	1100101000	SUCTION FLANGE FITTING	15	1	
1.3.3	2204134000	O-RING 24		1	
1.4	0700001445	RETURN PIPE ASSEMBLY, COMPLETE	D15x171x45	1	
2	4104804020	<b>ALTERNATOR ASSEMBLY</b>		1	
2	4104816020	<b>ALTERNATOR ASSEMBLY</b>			1
2.3	4061011031	FRONT MOUNT			1
2.3.1		STUD	M8x30	4	
	8500905800	NUT	M8 NYLOCK	4	
2.4		SIDE SCREEN	IP23 Steel	2	
	8500406000	SCREW M5x10		4	
2.5		STATOR ASSEMBLY	6 kW	1	
		STATOR ASSEMBLY	10 kW		1
2.6	0309013235	AIR DIFFUSER	HMGE 10kW	1	
	8500406000	SCREW M5x10		4	
2.7		ROTOR ASSEMBLY	6 kW	1	
		ROTOR ASSEMBLY	10 kW		1
2.8		FAN	d30	1	
		FAN	d35		1
2.9		REAR BEARING	6205 2RS C3	1	
2.11		SLIP RING		1	
2.12		SLIP RING COVER		1	
2.13	0309013235	END COVER	HMGE10	1	
2.14		STUD	280	1	
		STUD	340		1
2.15		BRUSH GEAR		1	
2.15.1	4605750000	VARISTOR		1	



**PART LIST BASIC ASSEMBLY**

No	STOCK NUMBER	DESIGNATION	DETAILS	QUANTITY	
				6kW	10kW
2.22		COMPONENT CHASSIS		1	
		SCREW M6x10		6	
2.23		COMPOUND		1	
	8500409900	SCREW M6x45 + WASHER		4 + 4	
2.24	30010201	CAPACITOR		1	
		NUT M8 NYLOCK + CROWN WASHER		1 + 1	
2.25	0300001080	DIODE BRIDGE		2	
	8500406300	SCREW M5x16		2	
2.26		TERMINAL BLOCK		1	
	8500409200	SCREW	M6x12	4	
2.27		BLOCK CONNECTOR		1	
		SCREW	M4x15	2	
2.30	0309018216	COVER	HMG 6-10 BH	1	
		SCREW	M5x16	4	
2.32	0309014335	END PLATE BENDED	HMG 6-10	1	
2.33	0309014350	SPACER	HMG 6-10	2	
2.34	0309014336	END PLATE STRAIGHT	HMG 6-10	1	
5.	8307571000	RUBBER CUSHION	OPTIONAL	4	
		NUT M10 + WASHER		4 + 4	
6.		GROUND WIRE	4 mm2	1	

**CONTROL UNIT ASSEMBLY**



NOTE !  
WHEN ORDERING SPARE PARTS,  
UNIT'S TYPE, MODEL AND SERIAL  
NUMBER SHOULD BE INDICATED.



**DYNASET****GENSCO**

HYDRAULIC MAGNETIC GENERATOR, PRO SERIES

HMG PRO 6kW-220VDC-33

HMG PRO10kW-220VDC-48

**PART LIST CONTROL UNIT**

No	STOCK NUMBER	DESIGNATION	DETAILS	QUANTITY	
				6kW	10kW
3.0	D120105152 D120105177	CONTROL UNIT CONTROL UNIT	HMGE PRO6 HMGE PRO10	1	1
3.2	0309012728	CONTROL UNIT BODY 6-10 kW		1	
3.2.1	8500403100	ALLEN SCREW	M4x10	4	
3.2.2	4806087000	CABLE WASHER	TET 10-14	1	
3.3.1	0309012979	FASTENER HMG PRO 6-10kW		1	
3.3.1.2	0309014339	SPACER		2	
3.3.1.3	8500409800	ALLEN SCREW	M6x40	2	
3.3.1.4	8500409500	ALLEN SCREW	M6X25	2	
3.4.2	0309012311	THERMAL PLATE		1	
3.4.3	0309012741	HMG SPACER		2	
3.4.4	4609011635	HMG RESISTOR	12R	1	
3.4.6	8500409500	ALLEN SCREW	M6x25	2	
3.5	0301000001	CONTROL UNIT PCB		1	
3.6.	0309012731 8500582400	HMG SHUKO SOCKET END 6-10 kW COUNTERSUNK SCREW DIN 7991	M6x12	1 4	
3.6.4	4805859000	SOCKET SHUKO 5-POLE 16A IP44		1	
3.6.5	4805963000 4805964000	SOLENOID VALVE CONNECTOR, SEAL VALVE CONNECTOR,		2 2	
3.6.7	V100103535	DISPLAY UNIT	HMG PRO	1	
3.7	4806003000	HMG MOUNTING RAIL		1	
3.7.1	4605638200	RELAY SOCKET/ FASTENING BAIL		1	
3.7.2	4605633000	RELAY 24VDC 16A,SPCO-B		1	
3.7.4	4806032000 4806031000	TERMINAL BLOCK PE TERMINAL BLOCK PE	10mm2 4mm2	1 1	
3.9	0309011636	COVER CONTROL UNIT	HMG PRO6-10	1	