

Engine	Cummins 6BTAA5.9
Net Power	109 kW (146 hp) @ 2,200 rpm
Blade Width	3,660 mm
Maximum Speed	41 km/h
Draw Bar Pull	65 kN
Operating Weight	12,400 kg

414

MOTOR GRADER

 **LIUGONG**



TOUGH WORLD. TOUGH EQUIPMENT.

414 SPECIFICATIONS >>>

ENGINE

Emission Regulation	Tier 2 / Stage II
Make	Cummins
Model	6BTAA5.9
Gross Power	118 kW (158 hp) @ 2,200 rpm
Net Power	109 kW (146 hp) @ 2,200 rpm
Peak Torque	690 N · m @ 1,300 rpm
Torque Rise %	34%
Number of Cylinders	6
Aspiration	turbo air-to-air aftercooled

TRANSMISSION

Transmission Type	power shift
Transmission Configuration	6f / 3r
Torque Converter	three – member single turbine
Maximum Travel Speed, fwd	41 km/h
Maximum Travel Speed, rev	29 km/h
Number of Speeds, fwd	6
Number of Speeds, rev	3

AXLES

Differential Type	limited slip
Final Drive Type	chain drive
Axle Oscillation	15°
Front Axle Type	all welded steel frame
Front Axle, Wheel Lean Angle	left / right 17°

STEERING

Steering Configuration	load sensor steering gear
Steering Relief Pressure	17 MPa
Minimum Turning Radius	7,200 mm
Steering Angle	± 45°
Frame Articulation Angle	± 20°

BRAKES

Service Brake Type	shoe
Service Brake Location	rear axle only

TIRES

Tire Size	13.00 - 24
-----------	------------

HYDRAULIC SYSTEM

Main Pump Type	gear
Main Relief Pressure	18 MPa
Pilot Pump Flow	119 L/min

WORKING CAPACITIES

Maximum Draw Pull	65 kN
Cutting Pressure	5,500 kg

TANDEM DRIVE PERFORMANCE

Height	580 mm
Width	210 mm
Center Distance	1,540 mm
Oscillating Angle	±15

MOLDBOARD PERFORMANCE

Bank Cut Angle	40~70°
Moldboard Lift Above Ground	460 mm
Moldboard Side Shift, right / left	650 / 520 mm
Maximum Sloping Angle	90°
Cutting Depth	600 mm
Circle Rotation	360°
Circle Diameter	1,265 mm
Circle Thickness	120 mm

DIMENSIONS

Wheelbase	5,900 mm
Overall Length	8,340 mm
Overall Height with Cab	3,370 mm
Clearance under Front Axle	570 mm
Moldboard Standard Length	3,660 mm
Moldboard Standard Thickness	19 mm
Moldboard Standard Height	610 mm

OPERATING WEIGHTS

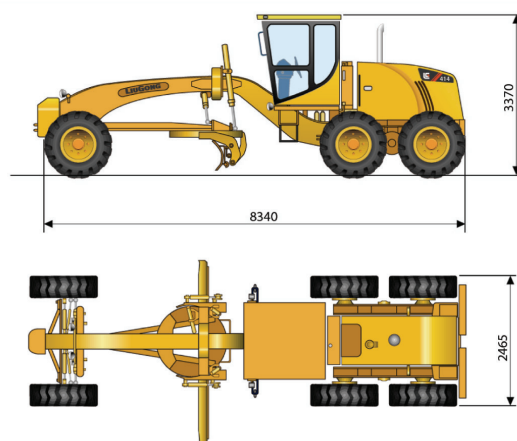
Operating Weight	12,800 kg
On Front Wheels	3,720 kg
On Rear Wheels	8,680 kg

SERVICE CAPACITIES

Fuel Tank	250 L
Engine Oil	17 L
Cooling System	40 L
Hydraulic Reservoir	100 L
Transmission And Torque Converter	45 L
Tandems, Each	23 L

OPTIONAL EQUIPMENT

Rear Ripper
Front Dozer
Automatic Leveling System
ROPS/FOPS Cab
Rotary Beacon
Rake Attachment



Guangxi Liugong Machinery Co., Ltd.

No. 1 Liutai Road, Liuzhou, Guangxi 545007, PR China
 T: +86 772 3886124 E: overseas@liugong.com
 www.liugong.com

Specifications and designs are subject to change without notice. Machines shown may include optional equipment.

05/2014 Designed by LiuGong