

Engine	Cummins QSB7
Gross Power	160 kW(214.6 hp) @ 2,100 rpm
Net Power	156 kW(209.2 hp) @ 2,100 rpm
Maximum Digging Depth	7,300 mm
Standard Bucket Capacity	1.4 m ³
Operating Weight	31,300 kg

930E EXCAVATOR



TOUGH WORLD. TOUGH EQUIPMENT.

930E SPECIFICATIONS >>>

ENGINE	
Emission Regulation	Tier 2m / Stage II
Make	Cummins
Model	QSB7
Gross Power	160 kW(214.6 hp) @ 2,100 rpm
Net Power	156 kW(209.2 hp) @ 2,100 rpm
Peak Torque	895 N · m @ 1,300 rpm
Number of Cylinders	6
Displacement	6.7 L

TRACK DRIVE	
Maximum Travel Speed	5.5 km/h
Drawbar Pull	255 kN

UNDERCARRIAGE	
Shoe Width	600 mm
Number of Shoes per Side	48
Number of Upper Rollers per Side	2
Number of Bottom Rollers per Side	9

HYDRAULIC SYSTEM	
Main Pumps Total Flow	532 L/min
Relief Pressure, main	34.3 MPa
Relief Pressure, boost	37.3 MPa

SWING SYSTEM	
Swing Speed	10.3 rpm

REFERENCE ARM	
Arm Length	3,050 mm
Arm Breakout Force, max, ISO	149 kN

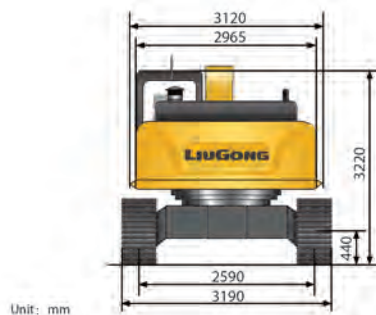
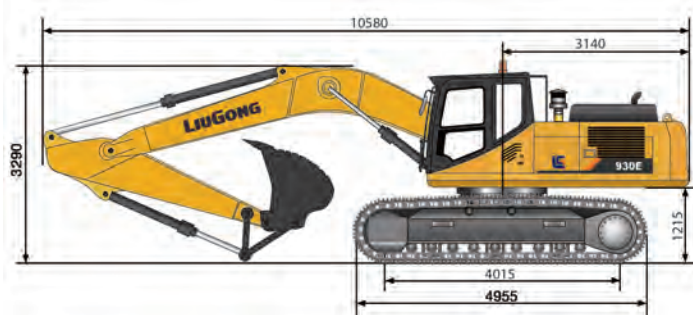
WORKING RANGES	
Maximum Dig Depth	7,300 mm
Reach at Ground Level	10,453 mm
Depth of 8' Level Bottom	7,096 mm
Maximum Dig Height	10,240 mm
Dump Height	7,265 mm
Maximum Dig Depth of Vertical Wall	6,216 mm

BUCKET PERFORMANCE	
Standard Bucket Heaped Capacity (Referenced)	1.4 m ³
Minimum Heaped Capacity of Bucket Options	1.4 m ³
Maximum Heaped Capacity of Bucket Options	1.6 m ³
Bucket Breakout Force, max, ISO	203 kN

SERVICE CAPACITIES	
Fuel Tank	520 L
Engine Oil	26 L
Cooling System	40 L
Hydraulic Reservoir	195 L
Hydraulic System Total	360 L

		Bucket: SAE 1.4m ³ , 1,400 kg		Boom: 6,200 mm		Arm: 3,050 mm		Shoes: 600 mm			
Lift Point Height		3 m		4 m		5 m		6 m		7 m	
7 m	kg									※4,670	※4,670
6 m	kg									※5,900	※5,900
5 m	kg							※6,450	※6,450	※6,260	※6,260
4 m	kg					※8,090	※8,090	※7,310	※7,310	※6,810	※6,810
3 m	kg	※17,050	※17,050	※12,100	※12,100	※9,710	※9,710	※8,330	※8,330	※7,460	7,000
2 m	kg	※21,980	※21,980	※14,770	※14,770	※11,320	※11,320	※9,370	8,690	※8,150	6,770
1 m	kg	※24,620	※24,620	※16,780	※16,210	※12,690	11,200	※10,300	8,380	8,790	6,560
0	kg	※25,460	※25,460	※17,960	15,740	※13,660	10,850	11,020	8,130	8,860	6,390
-1 m	kg	※25,340	※25,340	※18,410	15,510	※14,190	10,640	11,230	7,970	8,740	6,270
-2 m	kg	※24,570	※24,570	※18,260	15,450	※14,260	10,550	11,140	7,890	8,680	6,220
-3 m	kg	※23,180	※23,180	※17,540	15,510	※13,860	10,570	11,150	7,900	8,700	6,240
-4 m	kg	※21,040	※21,040	※16,160	15,690	※12,860	10,680	※10,390	8,000		
-5 m	kg	※17,830	※17,830	※13,850	※13,850	10,930					

- ※ Indicates the load is limited by hydraulic capacity rather than tipping capacity.
- The above rated loads are in compliance with ISO 10567 hydraulic excavator lift capacity rating standard. They do not exceed 87% of hydraulic lifting capacity or 75% tipping load.
- Ratings at bucket lift hook.



Unit: mm

Guangxi Liugong Machinery Co., Ltd.

No. 1 Liutai Road, Liuzhou, Guangxi 545007, PR China
 T: +86 772 3886124 E: overseas@liugong.com
 www.liugong.com

05/2014 Designed by Liugong

Specifications and designs are subject to change without notice. Machines shown may include optional equipment.