

LP-Series

Illuminated Indicators

PRODUCT WEBPAGE

request sample, configure part



The LP-Series Illuminated Indicators are the perfect complement to the aesthetics, reliability, and performance of the L-Series sealed rocker switches. As a critical safety feature, the illumination alerts the operator of essential system functions or malfunctions, such as: oil pressure, high temperature, transmission or other fluid levels, parking brake, or general system confirmations.

1-2
LED's

12-24
VDC

IP67 Sealing
Above-Panel

Typical Applications

- Construction
- Agriculture
- On/Off-Highway

Tech Specs

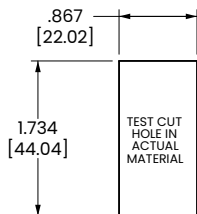
Electrical

Terminals	Brass or copper/silver plate 3/16" (4.76mm) & 1/4" (6.3mm) Quick Connect terminations standard.
Lighted	Incandescent - rated 10,000 hours LED -rated 100,000 hours 1/2 life (LED is internally ballasted for voltages to 24VDC)

Physical

Seals	Insert, base & bracket are sealed
Base	Nylon 66 GF rated to 85°C with a flammability rating of 94VO.
Insert	Polycarbonate rated at 100°C.
Connector	Nylon 66 rated at 85°C. Polarized
Markings	Over 1000 pad printed or laser etched legends available
Bracket	Nylon 66 GF rated to 85°C

Mounting Specifications



MOUNTING HOLE

Panel Thickness Range

Acceptable Panel Thickness
.030 to .156 (.76mm to 3.96mm)
Recommended:
.030, .062, .093, .125 and .156

Environmental

Environmental	IP67, for above-panel components of actual switch only.
Corrosion Resistance	Mixed Flowing Gas MFG Class III per ASTM B-827 & B-845, Method H, with 3 years exposure.
Operating Temperature	-40°C to +85°C
Vibration 1	Per Mil-Std 202F, Method 204D Test Condition A 0.06 DA or 10G's 10- 500 Hz. Tested with VCH connector. Test criteria - No loss of circuit during test and pre and post test contact resistance.
Vibration 2	Resonance search 24-50 Hz 0.40 DA 50-2000 ±10 G's peak Results Horizontal Axis 3-5 G's max. Random 24 Hz 0.06 PSD-Gsq/H 60 Hz 0.50 100 Hz 0.50 200 Hz 0.025 2000 Hz 0.025 No loss of circuit during test; <10µ chatter.
Shock	Per Mil-Std 202F, Method 213B, Test Condition K @ 30G's. Tested with VCH connector. Test criteria - No loss of circuit during test, pre, and post test contact resistance.
Salt Spray	Per Mil-Std 202F, Method 101D, Test Condition A, 48 Hrs.
Thermal Shock	Per Mil-Std 202F, Method 107F, Test Condition A, -55°C to 85°C. Test criteria - pre and post test contact resistance.
Moisture Resistance	Per Mil-Std 202F, Method 106F, Test Criteria - pre and post test contact resistance.

Ordering Scheme

Sample Part Number LP 1 H R R 5 - 9 A A Y2 - 1 DU

1. SERIES

LP L-Series Illuminated Plug

2. TERMINATION ³

1 .250 (8.35) x .032 (0.51) Quick Connect
3 .187 (4.75) x .032 (0.51) Quick Connect

3. ILLUMINATION

LAMPS	ILLUMINATION	LAMP WIRED TO TERMINALS
A	1 - 10 (+) 9 (-)	
B	1 - 10 (+) 9 (-)	
	2 - 12 (+) 11 (-)	
C	1 - 10 (+) 9 (-)	
	2 - 12 (+) 9 (-)	
E	1 & 2 Parallel	10 (+) 9 (-)
H	1 & 2 Series	10 (+) 9 (-)

Lamp 1 Located Above Terminals 9 & 10 End Of Bracket.
Lamp 2 Located Above Terminals 11 & 12 End Of Bracket.
Positive (+) And Negative (-) Symbols Apply To Led Lamps Only.

4,5. LAMP. (SAME CODING FOR BOTH SELECTIONS) ²

Selection 4: specifies lamp 1 located above terminals 10 (+) & 9 (-).
Selection 5: specifies lamp 2 located above terminals 12 (+) & 11 (-).

No lamp	0 (position 5 only)					
Incandescent	4 3V	5 6V	6 12V	7 18V	8 24V	
LED	Amber	Green	Red			
2VDC	L	F	R			
6VDC	M	G	S			
12VDC	N	H	T			
24VDC	P	J	V			

6. BRACKET COLOR

5 Black

7. INSERT COLOR ^{1,2}

9 Painted Black - Laser Etch	D Amber (Translucent)
A Clear (Transparent)	E Green (Translucent)
B White (Translucent)	F Blue (Translucent)
C Red (Translucent)	

8, 9. STYLE (SAME CODING FOR BOTH SELECTIONS)

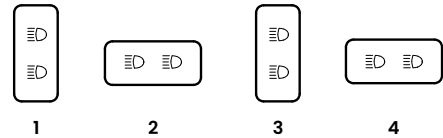
Z Not Painted (used with Insert Colors A-F)
5 Clear Laser Etch Background Color (used with Insert Color 9)
A White Laser Etch Background Color (used with Insert Color 9)

10. LEGEND OVER LAMP ¹

00 No legend
For standard legends, see "Standard Legend Codes" page.
For additional legends, please consult factory

11. LEGEND ORIENTATION

0 No legend
1 Orientation 1
2 Orientation 2
3 Orientation 3
4 Orientation 4



12. LEGEND OVER LAMP ²

00 No legend
For standard legends, see "Standard Legend Codes" page.
For additional legends, please consult factory

Notes:

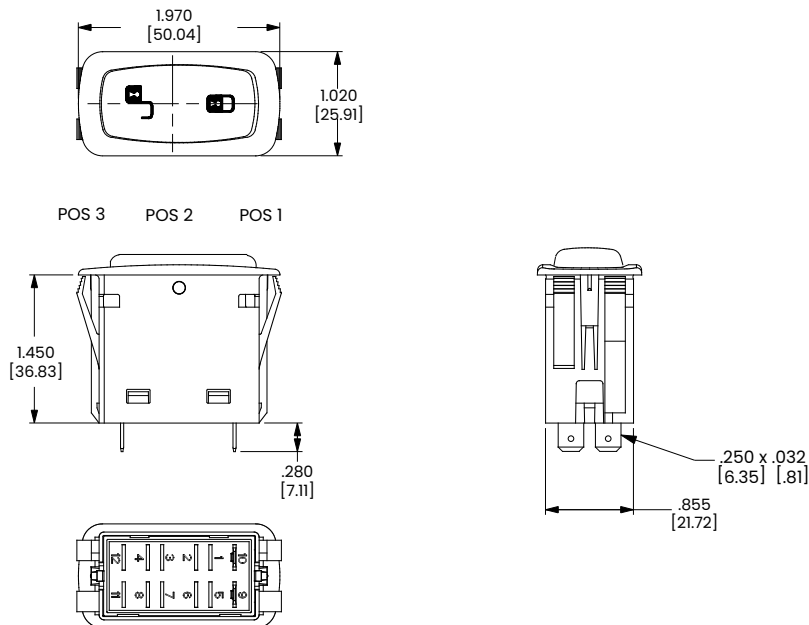
- To order separately, specify LPC and selection 7 code. Ex LPC-9
- For LEDs, insert color must be clear, white or match color of LED.
- For connector, specify part number LC2-01 (.187 tabs), LC3-01 (.250 tabs).

[Configure Complete Part Number >](#)

[Browse Standard Parts >](#)

Dimensional Specs

inches [millimeters]



Standard Legend Codes

YK	UA	UB	US	UV	UW	UX	UY	MP	MR	PX	MS	MT
VU	MW	NZ	NX	NY	YM	VW	PS	PW	PZ	WG	WM	RN
RP	YG	TX	VD	VE	VF	VG	SH	SM	SN	SP	SR	SY
DIM	BRIGHT	UH	UJ	PD	PE	PF	VC	VJ	UF	UG	MU	TN
WY	WZ	WIPER	VZ	YE	NN	RW	PU	WA	YN	UE	NM	RJ
NS	PB	SE	VR	SL	VA	UC	VN	PK	VY	HORN	RH	NU
NR	YD	TL	VR	SL	VA	UC	VN	PK	VY	UZ	RH	NU
NV	RB	RC	RK	RL	MZ	RG	UP	DOWN	UD	UR	WD	TY
PA	UK	WR	UU	UT	YR	PM	VV	WB	TB	TC	TD	TE
MY	PV	TA	TZ	WC	PT	PN	PH	RA	TU	TT	YL	SK
VS	UL	UM	WK	TS	VT	WL	VP	YJ	PJ	RY	UP	NW
NP	RE	RF	PP	PR	TV	PC	YT	YU	PL	WJ	MV	RR
TK	RT	SEAT	VX	WF	WH	PG	SJ	YA	YB	RM	TM	RD
RS	UN	TP	TR	NT	MX	YC	TW	TJ	YF	TH	TF	TG
YS	YH	AUX	ON OFF	OFF ON	I O	O I	OFF ON	ON	OFF	I	O	II
RAISE	LOWER	HIGH	LOW	FWD	REV	DEPTH	TRIM TAB	ACC	NAV ANCH	WIND LASS UP/DN	LIVE WELL	REAR
ST	SU	WU	WV	SV	SW	VB	VH	VK	VL	VM	WE	SF
PARK	AUTO	RU	RV	RX								
SG	SS											

Authorized Sales Representatives and Distributors

Click on a region of the map below to find your local representatives and distributors or visit www.carlingtech.com/findarep.



About Carling

Founded in 1920, Carling Technologies is a leading manufacturer of electrical and electronic switches and assemblies, circuit breakers, electronic controls, power distribution units, and multiplexed power distribution systems. With six ISO9001 and IATF16949 registered manufacturing facilities and technical sales offices worldwide, Carling Technologies Sales, Service and Engineering teams do much more than manufacture electrical components, they engineer powerful solutions! To learn more about Carling please visit www.carlingtech.com/company-profile.

To view all of Carling's environmental, quality, health & safety certifications please visit www.carlingtech.com/environmental-certifications.

© Carling Technologies, Inc.

5. Carling is a registered trademark of Carling Technologies, Inc. in the U.S. and other countries.