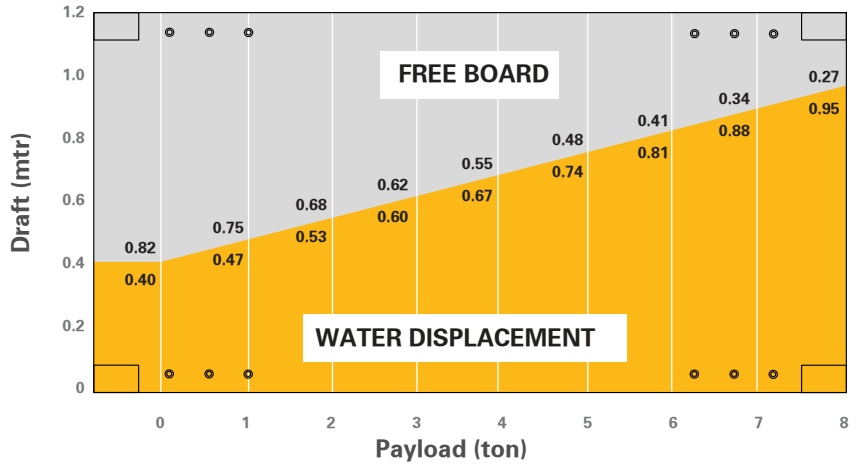


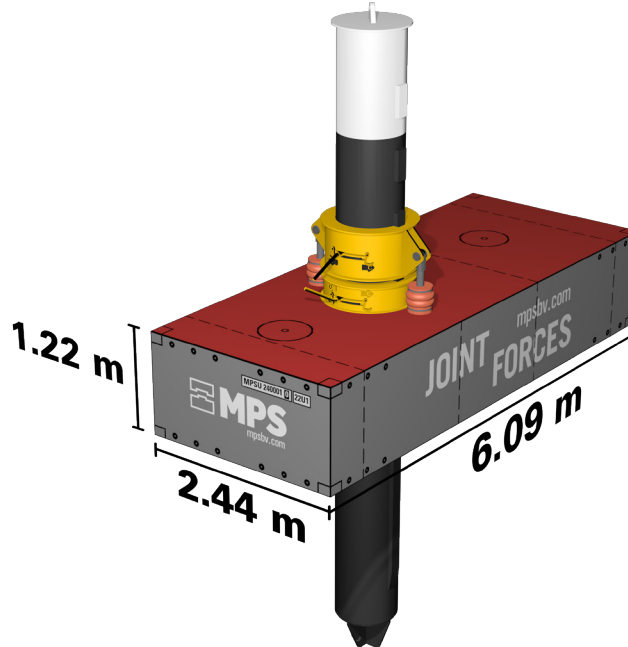
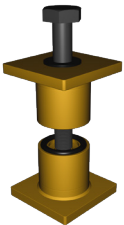
# FACTSHEET - MPS - 240SP

Characteristics 20 ft x 4.0 ft container pontoon with spud casing

Length O.A.	6.09 m (20ft)
Breadth O.A.	2.44 m (8ft)
Depth	1.22 m (4ft)
Weight	5.8 ton
Deck thickness	8 mm
Spud leg diameter	609 mm
Capacity jacking system	50 ton
Watertight bulkhead	1
Compartments	2
Manholes	2
Deckload	6.0 t/m <sup>2</sup>
T (draught) empty	0.40 m
T (draught) Max.	0.92 m
Load cap at t Max.	7.6 ton
Class society	Bureau Veritas
Class Notation	Inland waters Sheltered area Coastal area



**TEKLOCK®**



## TRANSPORT OPTIONS



BY ROAD



BY SEA



BY RAIL

### CSC APPROVAL CERTIFICATE

CSC SAFETY APPROVAL			
APPROVAL REFERENCE			
DATE MANUFACTURED			
IDENTIFICATION No.			
MAXIMUM OPERATING GROSS MASS	kg		lbs
ALLOWABLE STACKING LOAD FOR 1.8 g	kg		lbs
TRANSVERSE RACKING TEST FORCE	newtons		
END WALL STRENGTH	kg	NIL	lbs
SIDE WALL STRENGTH	kg	NIL	lbs
NEXT EXAMINATION DATE			

**MPSU 240001 0 22U1**