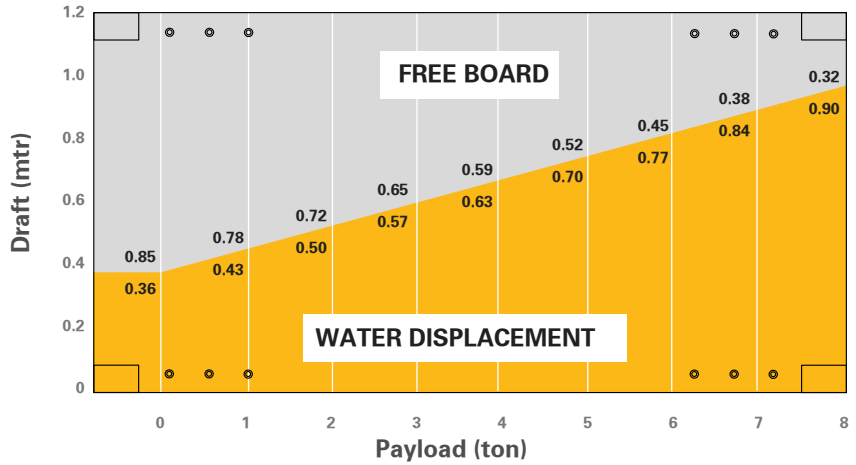


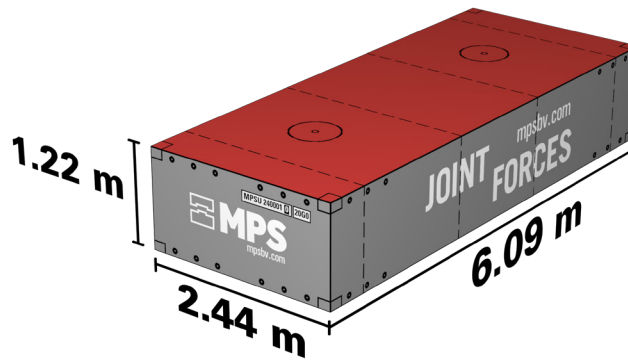
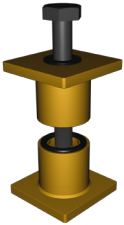
# FACTSHEET - MPS - 240

## Characteristics 20 ft x 4.0 ft container pontoon

Length O.A.	6.09 m (20ft)
Breadth O.A.	2.44 m (8ft)
Depth	1.22 m (4ft)
Weight	5.4 ton
Deck thickness	8 mm
<b>Watertight bulkhead</b>	
	1
<b>Compartments</b>	
	2
<b>Manholes</b>	
	2
<b>Deckload</b>	
	6.0 t/m <sup>2</sup>
<b>T (draught) empty</b>	
	0.36 m
<b>T (draught) Max.</b>	
	0.92 m
<b>Load cap at t Max.</b>	
	8.2 ton
<b>Class society</b>	
	Bureau Veritas
<b>Class Notation</b>	
	Inland waters
	Sheltered area
	Coastal area



TEKLOCK®



### TRANSPORT OPTIONS



BY ROAD



BY SEA



BY RAIL

**MPSU 240001 0 20G0**

CSC APPROVAL  
 CERTIFICATE

CSC SAFETY APPROVAL			
APPROVAL REFERENCE			
DATE MANUFACTURED			
IDENTIFICATION No.			
MAXIMUM OPERATING GROSS MASS	kg		lbs
ALLOWABLE STACKING LOAD FOR 1.8 g	kg		lbs
TRANSVERSE RACKING TEST FORCE	newtons		
END WALL STRENGTH	NIL		lbs
SIDE WALL STRENGTH	NIL		lbs
NEXT EXAMINATION DATE			