



MT5000
TECHNICAL SPECIFICATION

MT5000

The MILL TRACK M5000 tracked hammer mill is a compact mill crushing machine, for a fact it is the smallest tracked hammer mill on the market today. Equipped with a diesel engine, it can be loaded by ramps on any truck or trailer, and transported with ease, thanks to its compact size and limited weight. The hammer mill crusher MILL TRACK M5000, shatters and pulverizes glass light concrete, cement tiles, ceramics, toilettes etc. It is the best solution for glass recycling companies and porcelains manufacturers.

- 1. CRUSHER
- 2. FEEDER
- 3. PRODUCT CONVEYOR
- 4. POWERUNIT
- 5. TRACKS



CRUSHER



TECHNICAL DATA

MILL WORKING

Mill dimension
400x300 mm

Adjustment
Bars

Granulometry
0-25 mm

FEEDING: LOADING BELT WITH HOPPER

Length
1780 mm

Width
1280 mm

Hopper Capacity
0,6 m³

Loading Height
1900 mm

EXTRACTING BELT

Length
2500 mm

Width
400 mm

Pile height
1100 mm

ISUZU ENGINE

Power
21/28,5 kW/Hp

Consumption
5,5 L/h

Cylinder
N°3

Cooling
Water

RUBBER CRAWLED TRACK

Length
2100 mm

Width
300 mm

PERFORMANCE

Production
5-25 T/h

Max size
25 mm

Standard weight
3400 kg

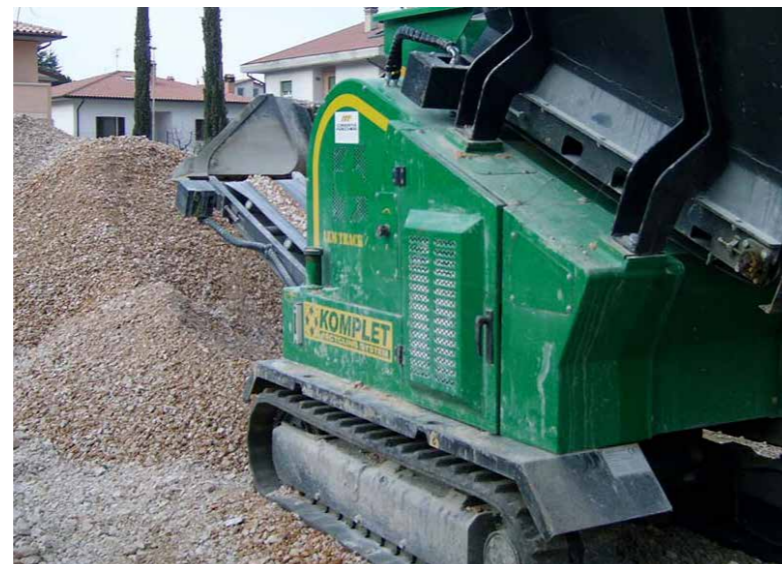
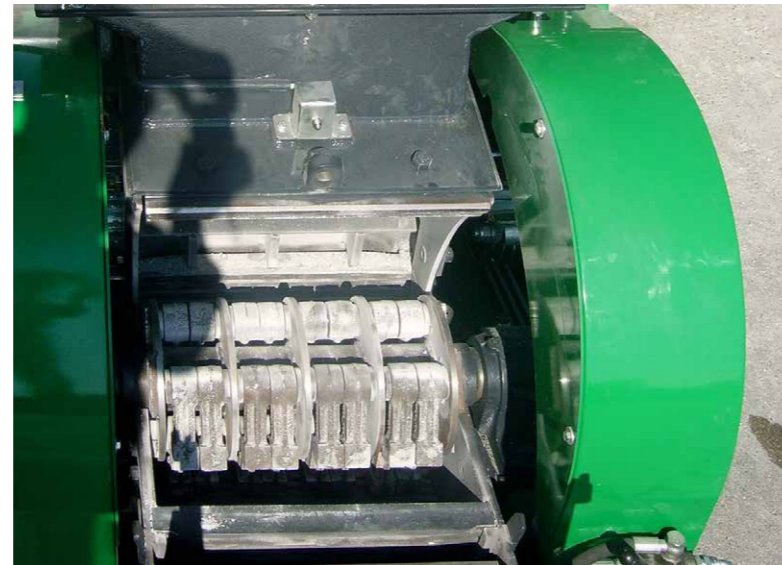


STANDARD MACCHINE

Remote control for all the movements.

ACCESSORIES

- Magnetic roller.
- Dust dumping system.



TRANSPORT DIMENSION & WORKING DIMENSION

