

Pedestal sealers

SP Manual



SPECIFICATIONS

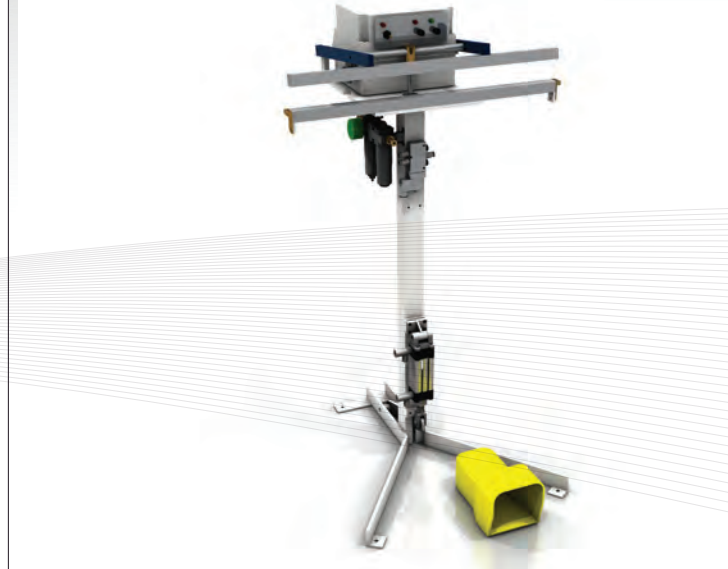
FOOT OPERATED BAR SEALER.
AVAILABLE WITH FRONT LOADING OR BOTTOM LOADING JAWS
HEAVY DUTY CONSTRUCTION.

- Seal lengths from 450mm up to 1000mm.
- 4 - 5 packs per minute
- 220V power supply
- Dust proof electrical enclosure
- Twin 2,5mm seals or Single 6,35mm seal

Optional :

Adjustable loading tables
Dual jaws

SP Pneumatic



SPECIFICATIONS

PNEUMATIC OPERATED BAR SEALER
AVAILABLE WITH FRONT LOADING OR BOTTOM LOADING JAWS
HEAVY DUTY CONSTRUCTION

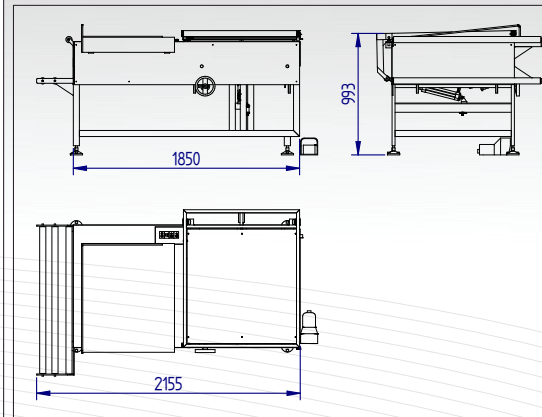
- Seal lengths from 450mm up to 1000mm.
- 6 - 8 packs per minute
- 220V power supply
- 5 - 7 bar air supply. Supplied with service unit
- Dust proof electrical enclosure
- Twin 2,5mm seals or Single 6,35mm seal

Optional:

Adjustable loading tables
Dual jaws



DIMENSIONS



MACHINE SIZES

- 450mm x 600mm
- 600mm x 600mm
- 600mm x 800mm
- 1000mm x 1000mm

Custom sizes on request

SPECIFICATIONS

MANUAL OR PNEUMATIC SEALER FOR CENTRE FOLDED FILM.
FOR PRODUCT THAT NEEDS TO BE FULLY ENCLOSED.
USED IN CONJUNCTION WITH METRO TE TUNNEL.

- Capable of 5 packs per minute depending on pack type.
- Adjustable loading bed
- 2,5mm seal with hot cut
- Or bead seal only

Optional :

Driven take off table
Left or right handed operation