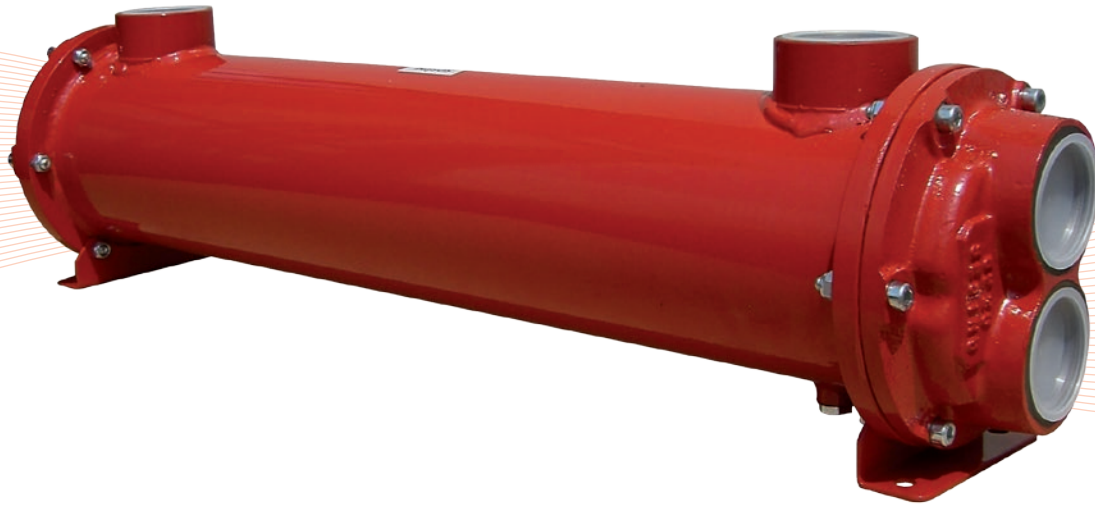
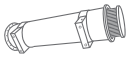


# MS 152/10 P

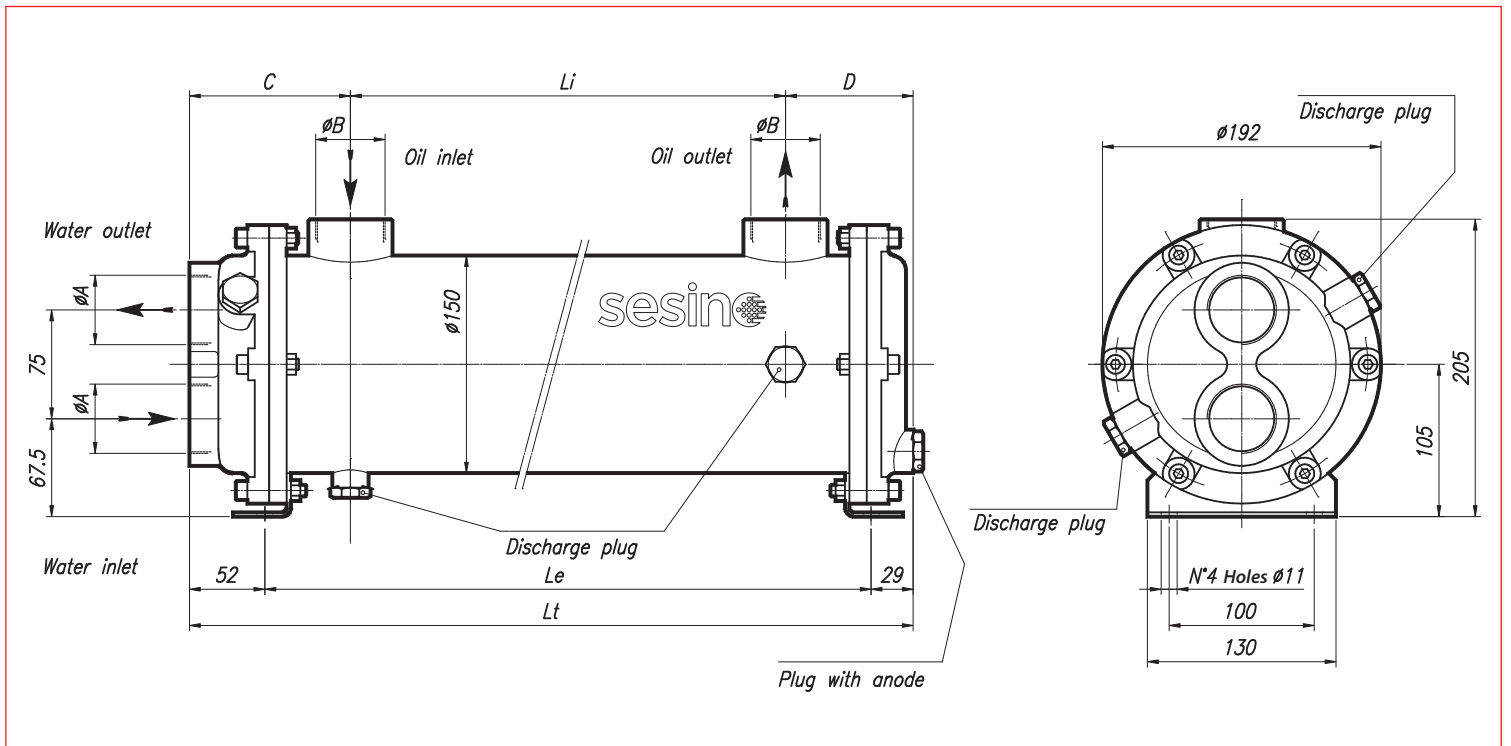


CONSTRUCTION MATERIALS		
SHELL	TUBES	END COVERS
CARBON STEEL*	COPPER*	CAST IRON*
STAINLESS STEEL	STAINLESS STEEL	STAINLESS STEEL
BRASS	CuNi (water sea)	BRONZE

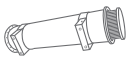


- Dimensions and technical characteristics are not binding

\*standard



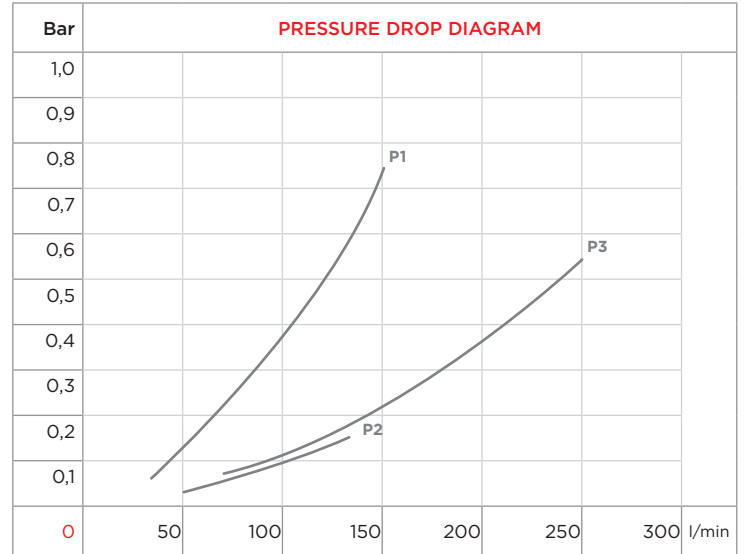
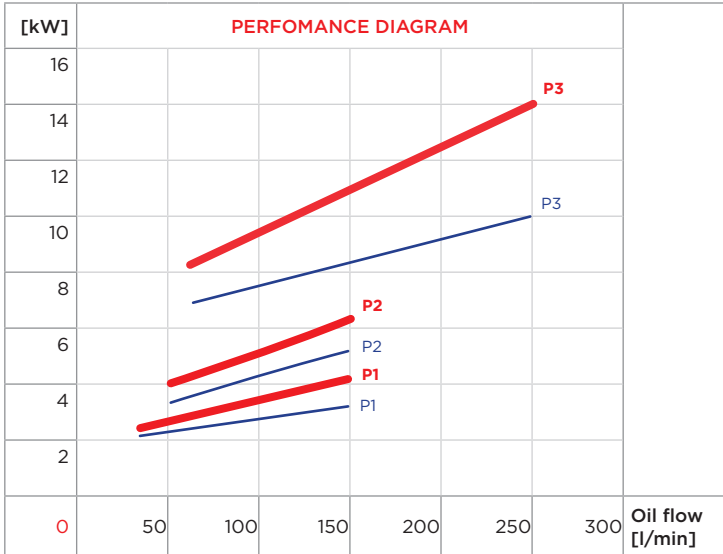
TYPE	CODE	OIL FLOW l/min	WATER FLOW l/min	kW MIN water flow		kW MAX water flow		WEIGHT kg	DIMENSIONS						
				$\Delta T_m$ 25° C	$\Delta T_m$ 25° C	$\Delta T_m$ 25° C	$\Delta T_m$ 25° C		$\phi A$	$\phi B$	C	D	Li	Le	Lt
MS 152/10 P1	2SC152/10P1	30-150	40-160	2,1	3,5	2,5	4,5	16	1" gas	3/4" gas	101	78	80	178	259
MS 152/10 P2	2SC152/10P2	50-150	40-160	4	5	4,6	6	19	1" gas	1" gas	111	88	150	268	349
MS 152/10 P3	2SC152/10P3	60-250	40-160	7	10	8,5	14	24	1 1/2" gas	1 1/2" gas	111	88	300	418	499
MS 152/10 P4	2SC152/10P4	90-200	40-160	12	17	16	21	29	2" gas	2" gas	121	98	430	568	649
MS 152/10 P5	2SC152/10P5	140-260	40-160	15	20	21	30	34	2" gas	2" gas	121	98	590	728	809
MS 152/10 P6	2SC152/10P6	160-300	40-160	19	26	27	37	39	2" gas	2" gas	121	98	720	858	939
MS 152/10 P7	2SC152/10P7	100-300	40-160	15	19	31	42	47	2" gas	2" gas	121	98	858	1108	1189
MS 152/10 P8	2SC152/10P8	100-250	40-160	29	35	41	52	54	2" gas	2" gas	121	98	1108	1308	1389
MS 152/10 P9	2SC152/10P9	200-380	40-160	43	46	64	72	61	2" gas	2" gas	121	98	1308	1508	1589



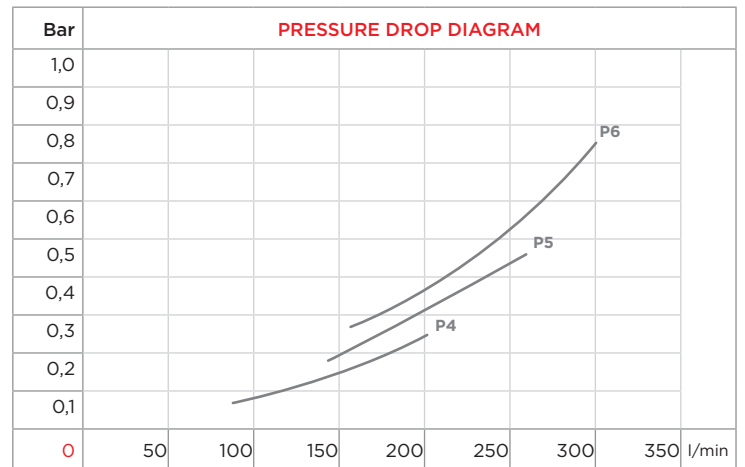
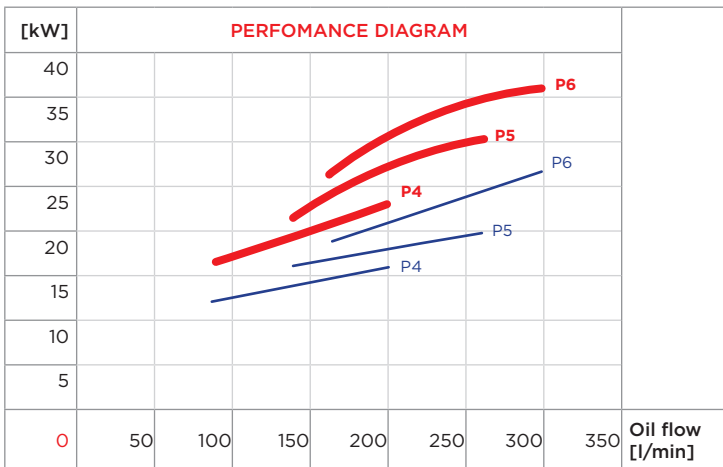
WATER FLOW RATE:



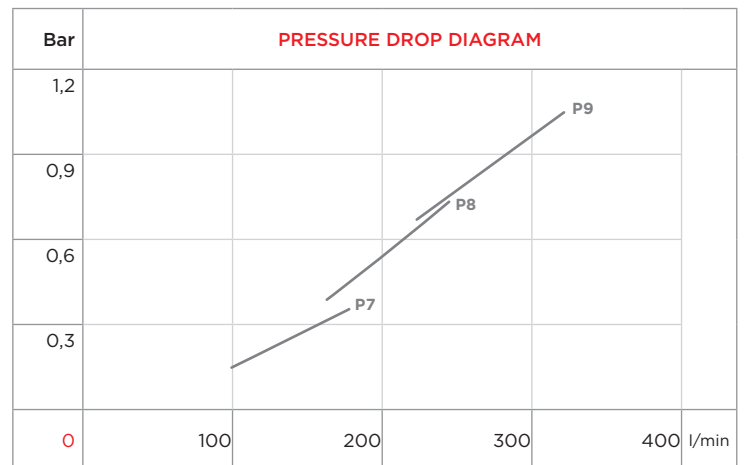
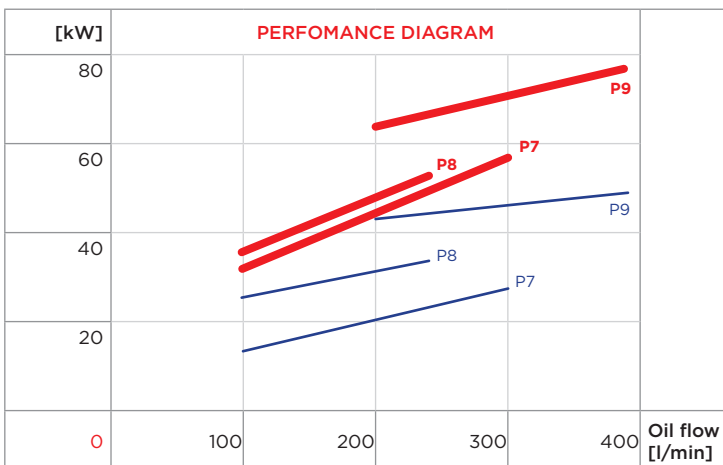
P1 P2 P3



P4 P5 P6



P7 P8 P9



$\Delta T_m$	10	15	20	25	30	35	40
f	2,5	1,67	1,25	1	0,83	0,71	0,63

cSt	22	30	46	68	100	150	220
f	0,4	0,6	1	1,5	2,3	3,3	4,6