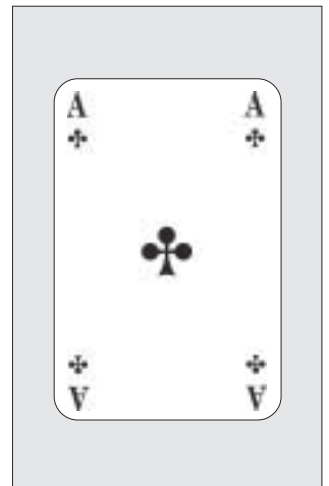


Alu-FORMAS

THE LIGHT FRAME FORMWORK

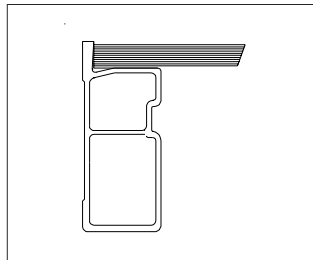
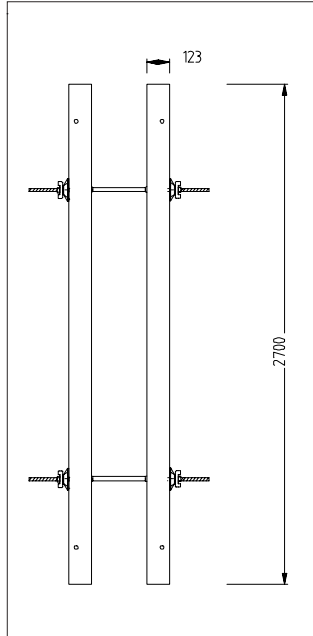


Light and tough

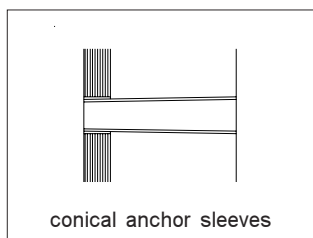
Decades of experience in the design and construction of aluminium frame formwork is reflected in **Alu-FORMAS**. Low weight and high compressive strength do not have to be contradictory. Generously dimensioned special profiles made from a robust aluminium alloy provide the **Alu-FORMAS** with its high level of rigidity.

The high quality powder coating is easily cleaned of concrete residue, thus saving on costly working time.

In combination with high quality 15 mm thick multi-layer sheeting, it can absorb concrete pressures up to 60 kN/m² without any problems. Its robust design makes it an ideal formwork for the modern construction industry.



Details like conical anchor sleeves are a matter of course with **Alu-FORMAS**.



MULTI-CLAMP - multi-talented

With the **MULTI-CLAMP**, you have only one fastener for almost every case. It can be used at any point on the circumference of the frame profile section. It is fastened with a few hammer blows, which means that even the upper clamps can be fitted from floor level.

For work in noise-sensitive areas, the **MULTI-CLAMP** can be fully locked to exclude noise by tightening the wing nut. The **MULTI-CLAMP** provides a safe, vibration-proof unit fastener for universal use.



The **MULTI-CLAMP**'s screw clamp ensures smooth adjustment. The wear-resistant self-cleaning thread is enduringly safe. Filler timbers up to 6 cm thick are also fitted with the **MULTI-CLAMP**, just like corner posts.

The universal applicability of the **MULTI-CLAMP** significantly reduces costs. It saves on material purchasing costs, since only a minimum number - if any - of special fasteners are now needed for compensations.



Each **Alu-FORMAS** basic panel is equipped with two holders for the **MULTI-CLAMPS**. When the formwork is removed, the **MULTI-CLAMPS** are fastened to the holders. The panels can be stacked as usual.

And the great advantage: **MULTI-CLAMPS** are readily available on the panel for the next installation. The number of loose formwork parts for transport and storage is reduced to a minimum.



Independent of cranes and easily portable

With its low weight of about 24 kg/m², *Alu-FORMAS* does not need cranes. The light and easily portable panel make for ease of handling and fast assembly.

Alu-FORMAS will save you formwork and crane time on your building site. The ideal light panel formwork for building sites without a crane.



Flexibility in the system

Alu-FORMAS is ideal because it is easy to handle and offers uncomplicated solutions for length compensations and a useful range of panel widths.

Whether upright or horizontal, the symmetry of the *Alu-FORMAS* panels ensures a perfect fit to any ground plan.



Combine...

Alu-FORMAS panels have the same framework dimensions as *FORMAS*. No additional fasteners are needed. The accessories are identical, which means that there is no possibility of confusion.

And... you will not need to purchase any extra parts. The logical system grid is fully compatible with *FORMAS*, and therefore very simple to combine.



Even better flexibility can be achieved by using panels of different heights.

The system offers 270 cm and 135 cm high panels.



You can fit filler timbers measuring up to 6 cm with the *MULTI-CLAMP*. Any unfilled lengths can be taken up over several panel joins. Filler plate is available for taking up larger unfilled lengths.



Always suitable

The easy-fit design of **Alu-FORMAS** carries through to the attachment of accessories. Each panel is equipped with three traversing open C-profiles. The optimum fastening solution is therefore always available to you for attaching push-pull props, beam yoke walers, scaffold jacks and other accessories.



Scaffold jacks can be fitted into the open C profile sections whether the panel is in upright or horizontal position.



Reinforcements can be fitted to the panels quickly and securely. The hook headed bolt provides you with an uncomplicated fastening tool for universal use.



Easy corner shuttering

Corners can easily be mounted from inside and outside corner angles and two panels.



Corners with blunt or sharp angles can be realized with movable corner angles.



Fixed 135° corner panels can also be supplied if necessary.



The width of these panels depends on the wall thickness and side length (25 cm) of the inside corner angle.



The movable corner angles can be locked at 90°.



Any unfilled lengths in outer or inner formwork are equalized by filler timbers and **MULTI-CLAMPS**.



Add a floor in any position

If you want to go higher, *Alu-FORMAS* is the right choice.

Just build the panels up, in upright or horizontal position, depending on the application.



An extensive range of accessories completes the *FORMAS* system. Whether you need polygon or circular formwork, or single face concreting or column formwork for fair-faced concrete, *Alu-FORMAS* always offers the right solution.



Alu-FORMAS robust light formwork

With its thick-walled, robust profile and its well thought-out design, *Alu-FORMAS* is particularly durable and economical.



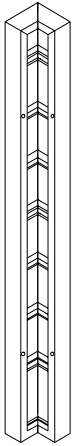
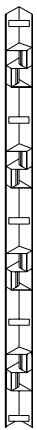
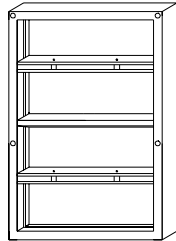
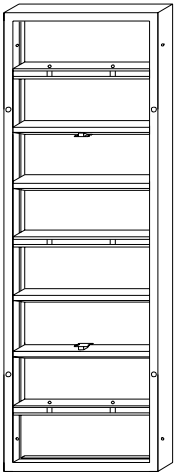
Please contact us to discuss any special appearance requirements you have for "your" *Alu-FORMAS*. We will supply your formwork on request with our *OPTIFORM* plastic-coated formwork plywood.

Do you have a company colour? We can supply formwork in any RAL colour. We will be happy to comply with any special requirements and appearances.



REBER Alu-FORMAS

Parts List

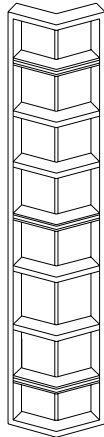
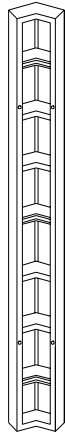


Outside corner angle

Height 270 cm 28 kg
Height 135 cm 14 kg

Inside corner angle

Height 270 cm 38 kg
Height 135 cm 24 kg

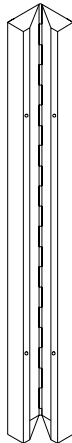
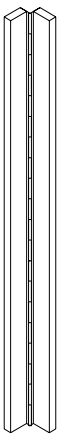


135° inside corner panel

Height 270 cm 35 kg
Height 135 cm 18 kg

135° outside corner panel

Height 270 cm 48 kg
Height 135 cm 25 kg

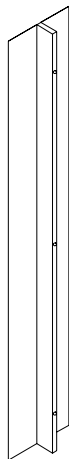


Outside corner angle movable

Height 270 cm 47 kg
Height 135 cm 25 kg

Inside corner angle movable

Height 270 cm 69 kg
Height 135 cm 37 kg

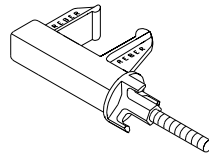


Filler plate

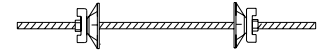
Height 270 cm 49 kg
Height 135 cm 27 kg

Powder-coated panels

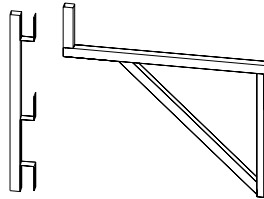
	Width cm	Height cm	Weight kg
panel AF	90	270	60
panel AF	80	270	57
panel AF	74	270	55
panel AF	60	270	47
panel AF	55	270	44
panel AF	50	270	42
panel AF	49	270	41,5
panel AF	45	270	40
panel AF	30	270	32
panel AF	24	270	29
panel AF	20	270	27
panel AF	90	135	34
panel AF	80	135	28
panel AF	74	135	27
panel AF	60	135	23
panel AF	55	135	22
panel AF	50	135	21,5
panel AF	49	135	21
panel AF	45	135	20
panel AF	30	135	18
panel AF	24	135	17
panel AF	20	135	15



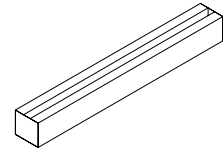
Multi-clamp 3,1 kg
max. adjustment 6 cm



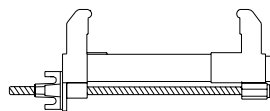
85 cm anchor tie rod 3,7 kg
with combination plate



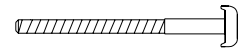
Scaffold jack with handrail post 9 kg



145 cm beam yoke waler 11 kg
70 cm beam yoke waler 6 kg



Compensation clamp 5,8 kg
max. adjustment 20 cm



Hook headed bolt 0,6 kg



Lifting hook 3,9 kg



Retaining bracket 0,8 kg

REBER GmbH
Industriestr. 11
D-74357 Bönningheim
Tel.: 0049 07143 402760
Fax: 0049 07143 40276-29
info@reber-schalung.de
www.reber-schalung.de

