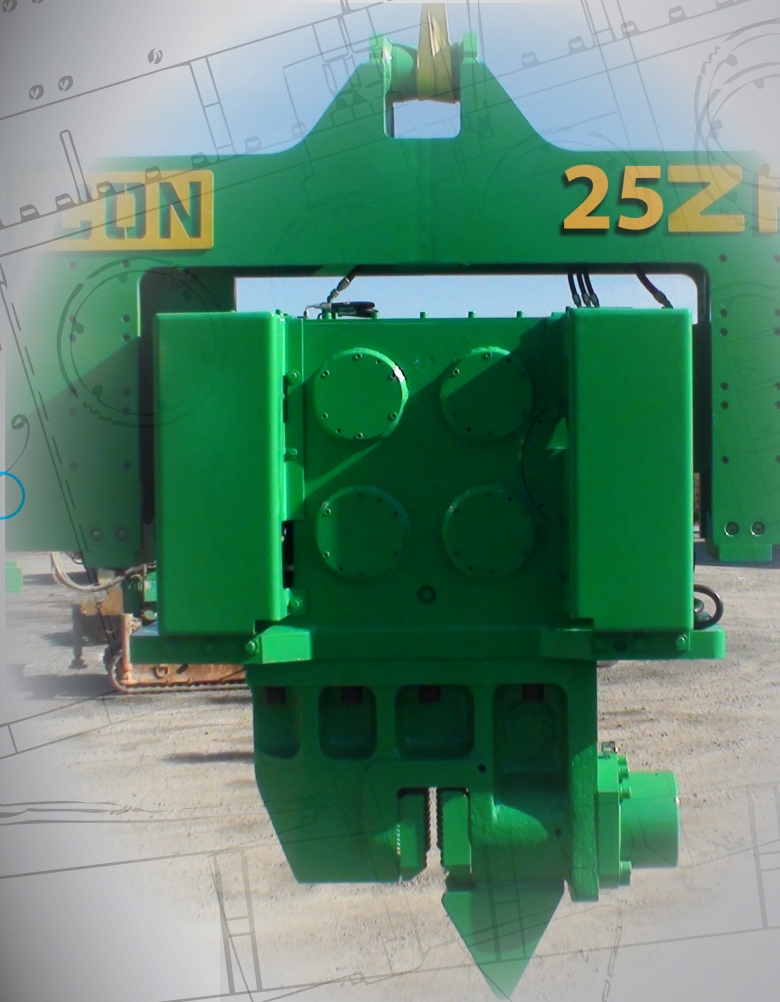


# iCON® Model 25ZR Hydraulic Vibratory Driver/ Extractor with Model 595CE Power Unit

595HP (444 kW) CAT C15 T3 (State IIIA) engine meets all EPA & EU emission regulations.  
Up to 100 tons (890 kN) line pull for extraction.



Full range of clamps available for sheet piling, H-Beams, pipe & caissons in addition to timber & concrete piles.

Computer controls on power unit reduce fuel consumption, pinpoint repair needs, while providing diagnostics and logs.

Power unit open circuit system for maximum cooling and filtering efficiency. Variable displacement pump for optimum power consumption and smooth operation.

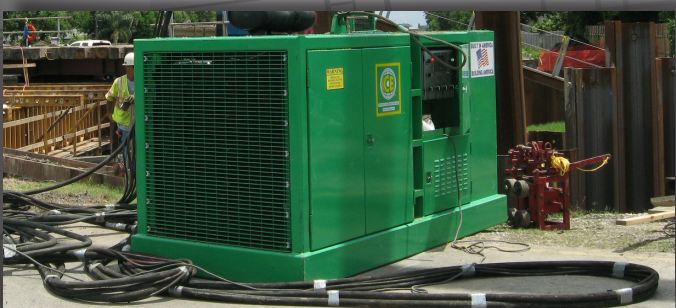
Remote-control pendant for vibrator and clamp with emergency stop. Engine speed control for fuel efficiency.

The Hycos designed CE compliant hydraulic power unit oil cooler is combined with the engine cooler providing ample capacity without using auxiliary power to drive extra cooler fans.

Adaptable for underwater, low headroom or box leads operation.

Environmentally friendly, non-toxic, biodegradable hydraulic oil.

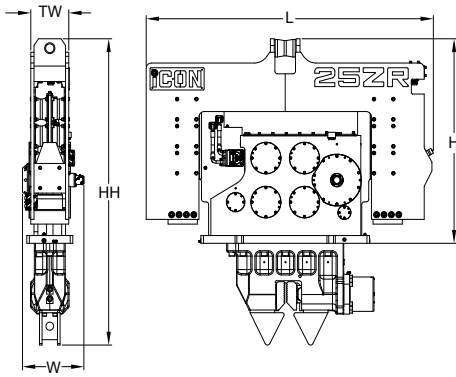
Designed and manufactured in the USA by ICE®, world leader in cost-effective foundation equipment since 1974.



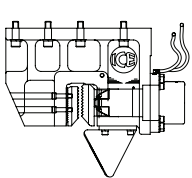
# iCON® Model 25ZR

## Hydraulic Vibratory Driver/ Extractor with Model 595CE Power Unit

### Dimensions

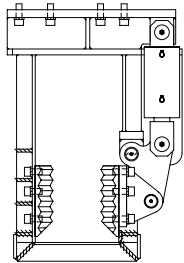


### Clamps & Accessories



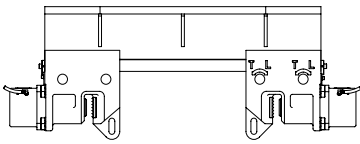
**Model 140C  
Sheeting Clamp**

Clamping force  
140 tons, 1245 kN  
Weight  
2,200 lbs, 1000 kg



**Model 40  
Wood, Concrete  
& Pipe Clamp**

Clamping force  
40 tons, 355 kN  
Weight  
3,220 lbs, 1460 kg



**6.5' Caisson Beam with  
Model 100BH Caisson Clamps**

Clamping force  
220 tons, 1975 kN  
Weight  
4,610 lbs, 2090 kg

### Other Model 25ZR Accessories

10' Clamp extension  
90° Turning plate  
Bias weights  
Vibrator stand  
Wireless remote

### Model 25ZR Vibrator Specifications

Eccentric moment	2200 in-lbs	25 kg-m
Max. centrifugal force	163 ton	1450 kN
Max. frequency	2300 rpm	2300 rpm
Max. amplitude (no clamp)	0.78 in	20 mm
Max. amplitude with clamp	0.51 in	13 mm
Max. static line pull	100 ton	890 kN
Max. operating pressure	5500 psi	380 bar
Dyn. weight (no clamp)	5467 lbs	2480 kg
Dyn. weight with clamp	6471 lbs	3795 kg
Total weight with clamp	12544 lbs	5690 kg
Transport weight	14220 lbs	6450 kg
Height without clamp (H)	77 in	1965 mm
Length (L)	112 in	2835 mm
Width (W)	26 in	660 mm
Throat width (TW)	15 in	375 mm

\* See "Clamps and Accessories Manual" for in depth description

### Model 595CE Power Unit Specifications

Engine	Caterpillar C15	
Power	595 HP	444 kW
Operating speed	1,950 rpm	1 950 rpm
Max. motors pressure	5,500 psi	380 bar
Motors flow (no load)	185 gpm	700 lpm
Clamp pressure	5,000 psi	345 bar
Clamp flow	6 gpm	25 lpm
Weight (w/ full fluid & 1/2 fuel)	15,432 lbs	7 000 kg
Length	165 in	4 200 mm
Width	80 in	2 050 mm
Height	83 in	2 100 mm
Hydraulic reservoir	317 gal	1 200 liters
Fuel capacity	238 gal	900 liters

iCON® Foundation Equipment  
Lissenveld 69  
4941VL Raamsdonksveer  
+31 162 58 23 24  
Hendrik de Vink & Sander Jorissen  
sales@iceicon.nl

Constant improvement and engineering progress make it necessary that ICE®, Inc and iCON Foundation Equipment to reserve the right to make specification changes without notice. Please consult ICE® for the latest available information.

©International Construction Equipment, Inc. All rights reserved. January 2012.

25ZR\_Jan2013