

iCON® Model 18ZR Hydraulic Vibratory Driver/ Extractor with Model 350CE Power Unit

350HP (261 kW) CAT C9 T3 (State IIIA) engine meets all EPA & EU emission regulations.
Up to 40 tons (356 kN) line pull for extraction.



Full range of clamps available for sheet piling, H-Beams, pipe & caissons in addition to timber & concrete piles.

Computer controls on power unit reduce fuel consumption, pinpoint repair needs, while providing diagnostics and logs.

Power unit open circuit system for maximum cooling and filtering efficiency. Variable displacement pump for optimum power consumption and smooth operation.

Remote-control pendant for vibrator and clamp with emergency stop. Engine speed control for fuel efficiency.

The Hycos designed CE compliant hydraulic power unit oil cooler is combined with the engine cooler providing ample capacity without using auxiliary power to drive extra cooler fans.

Adaptable for underwater, low headroom or box leads operation.

Environmentally friendly, non-toxic, biodegradable hydraulic oil.

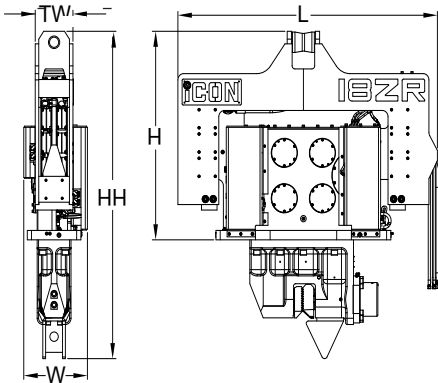
Designed and manufactured in the USA by ICE®, world leader in cost-effective foundation equipment since 1974.



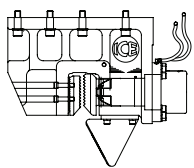
iCON® Model 18ZR

Hydraulic Vibratory Driver/ Extractor with Model 350CE Power Unit

Dimensions

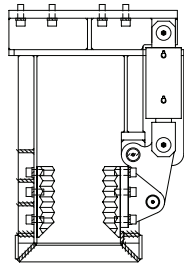


Clamps & Accessories



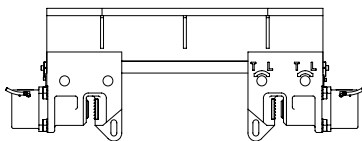
**Model 140C
Sheeting Clamp**

Clamping force
140 tons, 1245 kN
Weight
2,200 lbs, 1000 kg



**Model 40
Wood, Concrete
& Pipe Clamp**

Clamping force
40 tons, 355 kN
Weight
3,220 lbs, 1460 kg



**6.5' Caisson Beam with
Model 100BH Caisson Clamps**

Clamping force
220 tons, 1975 kN
Weight
4,610 lbs, 2090 kg

Other Model 18ZR Accessories

10' Clamp extension
90° Turning plate
Bias weights
Vibrator stand
Wireless remote

Model 18ZR Vibrator Specifications

| | | |
|---------------------------|-------------|----------|
| Eccentric moment | 1550 in-lbs | 18 kg-m |
| Max. centrifugal force | 117 ton | 1044 kN |
| Max. frequency | 2300 rpm | 2300 rpm |
| Max. amplitude (no clamp) | 0.72 in | 19 mm |
| Max. amplitude with clamp | 0.47 in | 12 mm |
| Max. static line pull | 33 ton | 290 kN |
| Max. operating pressure | 5500 psi | 380 bar |
| Dyn. weight (no clamp) | 4100 lbs | 1860 kg |
| Dyn. weight with clamp | 6305 lbs | 2860 kg |
| Total weight with clamp | 8708 lbs | 3950 kg |
| Transport weight | 10251 lbs | 4650 kg |
| Height without clamp (H) | 67 in | 1690 mm |
| Length (L) | 92 in | 2340 mm |
| Width (W) | 23 in | 575 mm |
| Throat width (TW) | 13 in | 330 mm |

* See "Clamps and Accessories Manual" for in depth description

Model 350CE Power Unit Specifications

| | | |
|-----------------------------------|----------------|--------------|
| Engine | Caterpillar C9 | |
| Power | 350 HP | 261 kW |
| Operating speed | 2,050 rpm | 2 050 rpm |
| Max. motors pressure | 5,510 psi | 380 bar |
| Motors flow (no load) | 98 gpm | 370 lpm |
| Clamp pressure | 5,000 psi | 345 bar |
| Clamp flow | 6 gpm | 25 lpm |
| Weight (w/ full fluid & 1/2 fuel) | 11,023 lbs | 5 000 kg |
| Length | 139 in | 3 520 mm |
| Width | 65 in | 1 650 mm |
| Height | 68 in | 1 720 mm |
| Hydraulic reservoir | 264 gal | 1 000 liters |
| Fuel capacity | 159 gal | 600 liters |

iCON® Foundation Equipment
Lissenveld 69

4941VL Raamsdonksveer

+31 162 58 23 24

Hendrik de Vink & Sander Jorissen

sales@iceicon.nl

Constant improvement and engineering progress make it necessary that ICE®, Inc and iCON Foundation Equipment to reserve the right to make specification changes without notice. Please consult ICE® for the latest available information.

©International Construction Equipment, Inc. All rights reserved. January 2012.

18ZR_Jan2013