

ROV

PRODUCTS

L320R



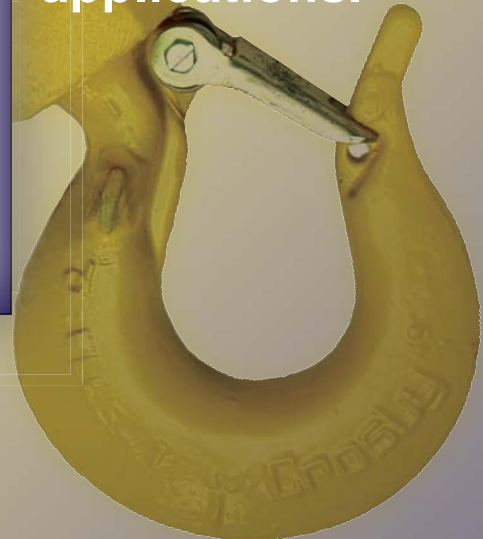
G209R



L562A



For efficient load handling and attachment by Remote Operating Vehicles in subsea and other hard-to-reach applications.



Developed in conjunction with major North Sea subsea operations.

Crosby Products Distributed By:

Blank area for distributor information.

Crosby® ROV Eye Hooks

Load Rated

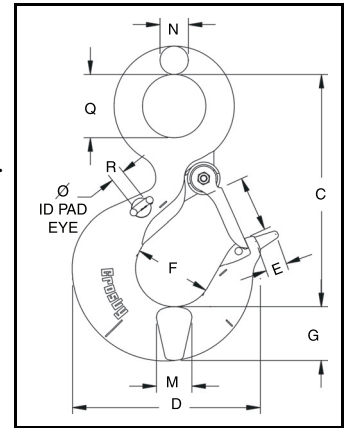


Crosby® ROV Hooks incorporate the following:

- Hook identification code stamped on each hook.
- Quenched and Tempered
- QUIC-CHECK® deformation and angle indicators forged on the hook.
- Fluorescent yellow finish for high “subsea” visibility.
- Tip extension allows for easy handling.
- Sizes 3.2t through 31.5t utilize new integrated latch (S-4320) that meets the World class standard for lifting.
- Heavy duty stamped latch interlocks with the hook tip.
- High cycle, long life spring.



**L320R
Eye Hooks**



L320R Eye Hooks - Metric

| L320R Stock No. | Working Load Limit (t) * | Hook ID Code | Weight Each (kg) | Dimensions (mm) | | | | | | | | | | Replacement Latch Stock No. |
|-----------------|--------------------------|--------------|------------------|-----------------|-----|----|-----|-----|----|----|-----|-----|----|-----------------------------|
| | | | | C | D | E | F | G | M | N | O | Q | R | |
| 1298427† | 3.2 | HA | 1.01 | 119 | 101 | 25 | 41 | 29 | 24 | 15 | 28 | 32 | 6 | 1096468 |
| 1298497† | 5.4 | IA | 2.04 | 147 | 122 | 25 | 51 | 37 | 33 | 18 | 35 | 40 | 6 | 1096515 |
| 1298567† | 8 | JA | 3.92 | 187 | 159 | 35 | 64 | 46 | 42 | 23 | 41 | 51 | 10 | 1096562 |
| 1298637† | 11.5 | KA | 7.02 | 230 | 189 | 35 | 76 | 57 | 41 | 28 | 53 | 62 | 10 | 1096609 |
| 1298707† | 16 | LA | 10.1 | 256 | 211 | 35 | 83 | 66 | 49 | 32 | 58 | 72 | 10 | 1096657 |
| 1298777† | 22 | NA | 18.4 | 318 | 262 | 45 | 108 | 76 | 60 | 40 | 77 | 89 | 19 | 1096704 |
| 1298847 | 31.5 | OA | 28.1 | 357 | 346 | — | 127 | 92 | 76 | 44 | 93 | 89 | 19 | 1090161 |
| 1298857 | 37 | PA | 48.5 | 462 | 357 | — | 137 | 116 | 81 | 51 | 95 | 114 | 19 | 1090189 |
| 1298867 | 45 | SA | 62.1 | 511 | 392 | — | 152 | 129 | 82 | 55 | 114 | 125 | 19 | 1090189 |
| 1298877 | 60 | TA | 102 | 602 | 470 | — | 178 | 152 | 99 | 64 | 130 | 145 | 19 | 1090205 |

* Minimum Ultimate Load is 4 times the Working Load Limit.

† Utilizes Crosby S320N style hook.

Pad eyes are provided on either side of hook as cable guides. The cable is passed through a hole drilled in the latch that assists in allowing the “remotely operated” cable to open latch.



Cables and drilled latches are not provided by Crosby. They can be fitted by your local Authorized Crosby Dealer. Crosby allows you to modify the latch as required to accomplish the task.

L320R Eye Hooks - Inches

| L320R Stock No. | Working Load Limit (t) * | Hook ID Code | Weight Each (lbs.) | Dimensions (in.) | | | | | | | | | | Replacement Latch Stock No. |
|-----------------|--------------------------|--------------|--------------------|------------------|-------|------|------|------|------|------|------|------|-----|-----------------------------|
| | | | | C | D | E | F | G | M | N | O | Q | R | |
| 1298427† | 3.2 | HA | 2.0 | 4.69 | 3.97 | .39 | 1.63 | 1.13 | .94 | .58 | 1.09 | 1.25 | .25 | 1096468 |
| 1298497† | 5.4 | IA | 4.0 | 5.77 | 4.81 | .39 | 2.00 | 1.44 | 1.31 | .72 | 1.36 | 1.56 | .25 | 1096515 |
| 1298567† | 8 | JA | 8.2 | 7.37 | 6.27 | .79 | 2.50 | 1.81 | 1.66 | .90 | 1.61 | 2.00 | .38 | 1096562 |
| 1298637† | 11.5 | KA | 15 | 9.07 | 7.45 | 1.18 | 3.00 | 2.25 | 1.63 | 1.11 | 2.08 | 2.44 | .38 | 1096609 |
| 1298707† | 16 | LA | 21 | 10.08 | 8.30 | 1.18 | 3.25 | 2.59 | 1.94 | 1.27 | 2.27 | 2.84 | .38 | 1096657 |
| 1298777† | 22 | NA | 38 | 12.53 | 10.30 | 1.77 | 4.25 | 3.00 | 2.38 | 1.56 | 3.02 | 3.50 | .75 | 1096704 |
| 1298847 | 31.5 | OA | 60 | 14.07 | 13.63 | — | 5.00 | 3.62 | 3.00 | 1.75 | 3.67 | 3.50 | .75 | 1090161 |
| 1298857 | 37 | PA | 107 | 18.19 | 14.06 | — | 5.38 | 4.56 | 3.19 | 2.00 | 3.75 | 4.50 | .75 | 1090189 |
| 1298867 | 45 | SA | 137 | 20.12 | 15.45 | — | 6.00 | 5.06 | 3.24 | 2.18 | 4.25 | 4.94 | .75 | 1090189 |
| 1298877 | 60 | TA | 224 | 23.72 | 18.50 | — | 7.00 | 6.00 | 3.91 | 2.53 | 5.12 | 5.69 | .75 | 1090205 |

* Minimum Ultimate Load is 4 times the Working Load Limit.

† Utilizes Crosby S320N style hook.

Additional Working Load Limits for L320R and L562A available upon request.

Crosby® ROV Shank Hooks

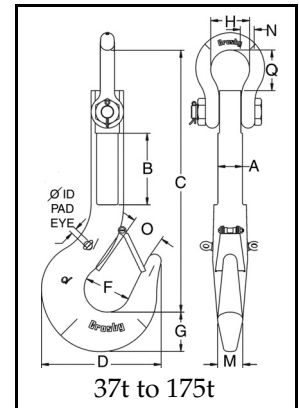
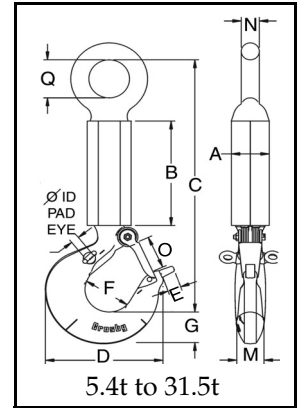
Load Rated



L562A
Style Shown
5.4t - 31.5t

Crosby® ROV Shank Hooks incorporate the following:

- Hook identification code stamped on each hook.
- Quenched and Tempered
- QUIC-CHECK® angle indicators forged into the top eye; and deformation and angle indicators forged on the hook.
- Fluorescent yellow finish for high “subsea” visibility.
- Tip extension allows for easy handling.
- Sizes 5.4t through 31.5t utilize new integrated latch (S-4320) that meets the World class standard for lifting.
 - Heavy duty stamped latch interlocks with the hook tip.
 - High cycle, long life spring.



L562A Shank Hooks - Metric

| L562A Stock No. | Working Load Limit (t) * | Hook ID Code | Weight Each (kg) | Dimensions (mm) | | | | | | | | | | | | | Replacement Latch Stock No. |
|-----------------|--------------------------|--------------|------------------|-----------------|-----|------|-----|-----|-----|-----|-----|-----|-----|-----|-----|-----|-----------------------------|
| | | | | A | B | C | D | E | F | G | H | M | N | Q | O | R | |
| 1297722† | 5.4 | IA | 9.5 | 65 | 250 | 421 | 123 | 9.9 | 51 | 37 | — | 29 | 22 | 51 | 35 | 6.4 | 1096515 |
| 1297792† | 11.5 | KA | 15 | 65 | 250 | 518 | 192 | 30 | 76 | 57 | — | 41 | 32 | 76 | 53 | 9.7 | 1096609 |
| 1297806† | 16 | LA | 18 | 65 | 250 | 550 | 212 | 30 | 83 | 66 | — | 49 | 35 | 79 | 58 | 9.7 | 1096657 |
| 1297862† | 22 | NA | 31 | 85 | 250 | 608 | 263 | 45 | 108 | 76 | — | 60 | 40 | 91 | 77 | 19 | 1096704 |
| 1298042 | 31.5 | OA | 44 | 85 | 250 | 660 | 346 | — | 127 | 92 | 104 | 76 | 48 | 106 | 92 | 19 | 1090161 |
| 1298049** | 37 | PA | 44 | 80 | 235 | 828 | 357 | — | 137 | 116 | 127 | 76 | 47 | 134 | 95 | 19 | 1090189 |
| 1298057** | 45 | SA | 90 | 80 | 235 | 865 | 392 | — | 152 | 129 | 127 | 83 | 47 | 134 | 108 | 19 | 1090189 |
| 1298087** | 60 | TA | 131 | 90 | 215 | 941 | 470 | — | 178 | 152 | 146 | 99 | 53 | 150 | 130 | 19 | 1090205 |
| 1298103** | 100 | WA | 303 | 140 | 300 | 1185 | 584 | — | 173 | 218 | 184 | 140 | 69 | 190 | 124 | 19 | 1090241 |
| 1298117** | 150 | XA | 395 | 150 | 230 | 1233 | 619 | — | 171 | 232 | 229 | 152 | 92 | 309 | 137 | 19 | 1090241 |
| 1298130** | 175 | YA | 515 | 170 | 255 | 1326 | 678 | — | 191 | 248 | 254 | 178 | 102 | 300 | — | 19 | — |

* Minimum Ultimate Load is 4 times the Working Load Limit. ** Utilize Crosby G-2140 shackle as eye. † Utilizes Crosby S319N style hooks.

L562A Shank Hooks - Inches

| L562A Stock No. | Working Load Limit (t) * | Hook ID Code | Weight Each (lbs.) | Dimensions (in.) | | | | | | | | | | | | | Replacement Latch Stock No. |
|-----------------|--------------------------|--------------|--------------------|------------------|-------|-------|-------|------|------|------|-------|------|------|-------|------|-----|-----------------------------|
| | | | | A | B | C | D | E | F | G | H | M | N | Q | O | R | |
| 1297722† | 5.4 | IA | 21 | 2.56 | 9.84 | 16.60 | 4.84 | .39 | 2.00 | 1.44 | — | 1.13 | .88 | 2.00 | 1.36 | .25 | 1096515 |
| 1297792† | 11.5 | KA | 33 | 2.56 | 9.84 | 20.39 | 7.54 | 1.18 | 3.00 | 2.26 | — | 1.63 | 1.25 | 3.00 | 2.08 | .38 | 1096609 |
| 1297806† | 16 | LA | 42 | 2.56 | 9.84 | 21.65 | 8.34 | 1.18 | 3.25 | 2.60 | — | 1.94 | 1.38 | 3.11 | 2.27 | .38 | 1096657 |
| 1297862† | 22 | NA | 68 | 3.35 | 9.84 | 23.75 | 10.34 | 1.77 | 4.25 | 3.01 | — | 2.38 | 1.59 | 3.58 | 3.02 | .75 | 1096704 |
| 1298042 | 31.5 | OA | 97 | 3.35 | 9.84 | 26.00 | 13.62 | — | 5.00 | 3.62 | 4.10 | 3.00 | 1.89 | 4.21 | 3.62 | .75 | 1090161 |
| 1298049** | 37 | PA | 97 | 3.15 | 9.25 | 32.58 | 14.06 | — | 5.38 | 4.56 | 5.00 | 3.00 | 1.84 | 5.26 | 3.75 | .75 | 1090189 |
| 1298057** | 45 | SA | 198 | 3.15 | 9.25 | 34.07 | 15.44 | — | 6.00 | 5.06 | 5.00 | 3.25 | 1.84 | 5.26 | 4.25 | .75 | 1090189 |
| 1298087** | 60 | TA | 289 | 3.54 | 8.46 | 37.06 | 18.50 | — | 7.00 | 6.00 | 5.75 | 3.91 | 2.08 | 5.94 | 5.12 | .75 | 1090205 |
| 1298103** | 100 | WA | 668 | 5.51 | 11.81 | 46.67 | 23.00 | — | 6.81 | 8.59 | 7.25 | 5.50 | 2.71 | 7.47 | 4.88 | .75 | 1090241 |
| 1298117** | 150 | XA | 871 | 5.91 | 9.06 | 48.53 | 24.38 | — | 6.75 | 9.12 | 9.00 | 6.00 | 3.62 | 12.18 | 5.38 | .75 | 1090241 |
| 1298130** | 175 | YA | 1135 | 6.69 | 10.04 | 52.24 | 26.69 | — | 7.50 | 9.75 | 10.00 | 7.00 | 4.00 | 11.80 | — | .75 | — |

* Minimum Ultimate Load is 4 times the Working Load Limit. ** Utilize Crosby G-2140 shackle as eye. † Utilizes Crosby S319N style hooks.

Crosby® ROV Shackles

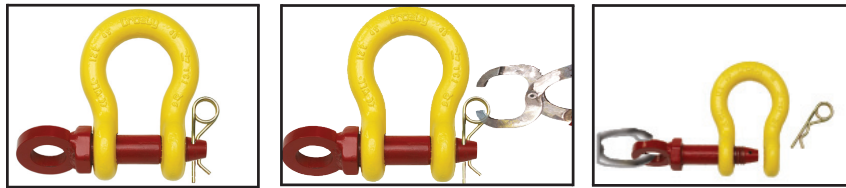
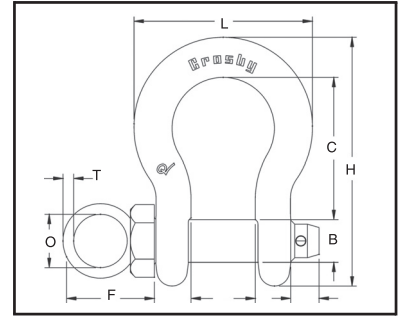
Fatigue Rated **Load Rated**



**G209R
ROV Shackle**

G209R ROV Shackles offer:

- Capacities 6-1/2 through 55 metric tonnes.
- Forged - Quenched and Tempered, with alloy pins.
- QUIC-CHECK® deformation and angle indicators forged on the bow.
- All ROV shackle bows, unless otherwise noted below, are galvanized, then painted fluorescent yellow.



G209R ROV Shackle - Metric

| G209R Stock No. | Working Load Limit (t) * | Weight Each (kg) | Dimensions - Body (mm) | | | | | Dimensions - Pin (mm) | | | |
|-----------------|--------------------------|------------------|------------------------|------|------|-----|-----|-----------------------|-----|------|----|
| | | | A | B | C | H | L | O | P | T | S |
| 1020872 | 6-1/2 | 1.79 | 36.6 | 25.4 | 84 | 148 | 102 | 50 | 58 | 10 | 17 |
| 1020902 | 8-1/2 | 2.28 | 42.9 | 28.7 | 95.5 | 167 | 119 | 50 | 61 | 10 | 18 |
| 1020932 | 9-1/2 | 3.75 | 46 | 31.8 | 108 | 190 | 131 | 70 | 83 | 12 | 18 |
| 1020952 | 12 | 5.31 | 51.5 | 35.1 | 119 | 210 | 146 | 70 | 84 | 12 | 23 |
| 1020972 | 13-1/2 | 7.18 | 57 | 38.1 | 133 | 233 | 162 | 75 | 91 | 15 | 23 |
| 1020992 | 17 | 9.43 | 60.5 | 41.4 | 146 | 254 | 175 | 75 | 93 | 15 | 24 |
| 1021102 | 25† | 15.4 | 73 | 51 | 178 | 313 | 225 | 90 | 114 | 17.5 | 29 |
| 1021125 | 35† | 23.7 | 82.5 | 57 | 197 | 348 | 253 | 106 | 132 | 20 | 30 |
| 1021158 | 55† | 44.6 | 105 | 70 | 267 | 453 | 327 | 120 | 145 | 25 | 45 |

* Minimum Ultimate Load is 5 times the Working Load Limit. † Furnished with galvanized finish

G209R ROV Shackle - Inches

| G209R Stock No. | Working Load Limit (t) * | Weight Each (lbs.) | Dimensions - Body (in.) | | | | | Dimensions - Pin (in.) | | | |
|-----------------|--------------------------|--------------------|-------------------------|------|-------|-------|------|------------------------|------|-----|------|
| | | | A | B | C | H | L | O | P | T | S |
| 1020872 | 6-1/2 | 3.62 | 1.44 | 1.00 | 3.31 | 5.83 | .50 | 1.18 | 2.28 | .39 | .65 |
| 1020902 | 8-1/2 | 5.03 | 1.69 | 1.13 | 3.75 | 6.56 | .56 | 1.18 | 2.40 | .39 | .73 |
| 1020932 | 9-1/2 | 7.41 | 1.81 | 1.25 | 4.25 | 7.47 | .63 | 2.28 | 3.27 | .47 | .75 |
| 1020952 | 12 | 9.50 | 2.03 | 1.38 | 4.69 | 8.25 | .69 | 2.28 | 3.31 | .47 | .89 |
| 1020972 | 13-1/2 | 13.53 | 2.25 | 1.50 | 5.25 | 9.16 | .75 | 2.36 | 3.58 | .59 | .91 |
| 1020992 | 17 | 17.20 | 2.38 | 1.63 | 5.75 | 10.00 | .81 | 2.36 | 3.66 | .59 | 1.18 |
| 1021102 | 25† | 27.78 | 2.88 | 2.00 | 7.00 | 12.34 | 1.00 | 2.16 | 4.49 | .69 | 1.14 |
| 1021125 | 35† | 45.00 | 3.25 | 2.25 | 7.75 | 13.68 | 1.22 | 2.60 | 5.12 | .79 | 1.18 |
| 1021158 | 55† | 85.75 | 4.13 | 2.75 | 10.50 | 17.84 | 1.38 | 2.76 | 5.63 | .98 | 1.50 |

* Minimum Ultimate Load is 5 times the Working Load Limit. † Furnished with galvanized finish



USA

P.O. Box 3128
Tulsa, OK 74101
(918) 834-4611
Fax: (918) 832-0940
crosbygroup@thecrosbygroup.com

CANADA

145 Heart Lake Road
Brampton, Ontario L6W 3K3
(905) 451-9261
Fax: (877) 260-5106
sales@crosby.ca

EUROPE

Industriepark Zone B nr 26
B - 2220 Heist-op-den-Berg Belgium
32-15-75-71-25
Fax: 32-15-75-37-64
sales@crosbyeurope.com