

PS-2600 **PLACER/SPREADER**



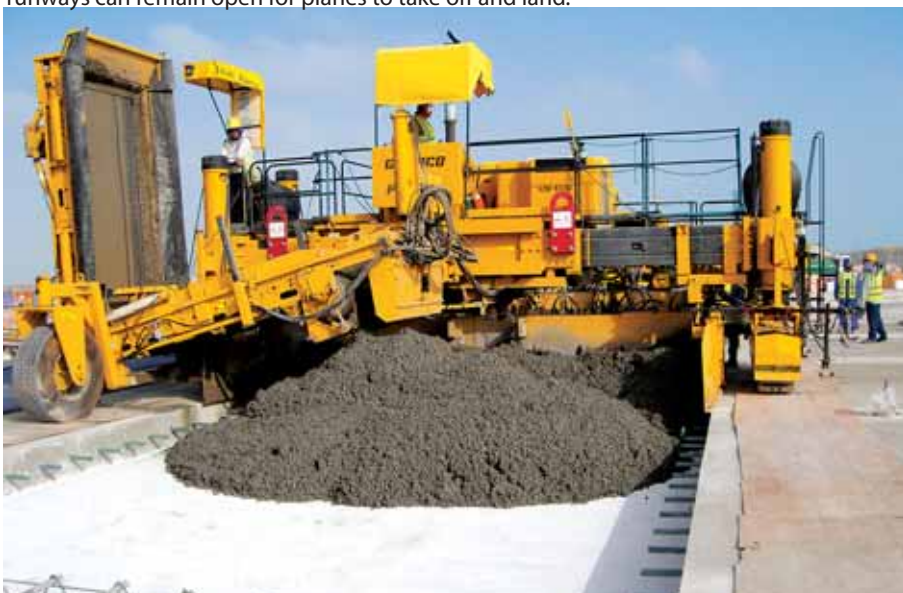
The Worldwide Leader in Concrete Paving Technology

High-Volume Placing & Spreading

- The GOMACO PS-2600 is built for maximum placing and spreading productivity in central-mix operations.
- The GOMACO exclusive G+® control system features self-diagnostics for front and rear grade, cross slope, steering, reverse steering, and spreading accuracy and ease of operation. The sensors on the placer/spreader operate off the same stringline as the paver.
- Equipped with G+ Connect™ for simple connections to 3D guidance.
- A counter-rotation feature also provides a 360 degree turning radius within the machine's width.
- The five foot (1.52 m) wide GOMACO-designed conveyor system is built with the strength and durability to catch the concrete load from end-dump trucks.
- The drive system for the conveyor belt has the capacity to run the 22 foot (6.71 m) long conveyor belt to nearly 500 feet per minute (152.4 mpm), allowing the trucks to unload quickly.



The GOMACO PS-2600 places concrete on one runway section of the airport, while other runways can remain open for planes to take off and land.



The GOMACO PS-2600 places concrete in front of a GP-2600 on an airport project.

Emission-Controlled Engine Achieves Optimum Performance

The GOMACO PS-2600 placer/spreader is powered by a 275 hp (205.2 kW) Caterpillar C9, 8.8 liter turbocharged diesel engine. The electronic-compliant engine reduces emissions and meets the required industry emission control standards being mandated for off-road diesel equipment throughout the world. The engine provides cleaner combustion and is tuned to achieve optimum performance.

The modular engine design provides easy access to service points. The 150 gallon (567.8 L) fuel reservoir and the 207 gallon (783.6 L) hydraulic oil reservoir are both independent of the main frame.

Modular Telescoping Frame Provides Width Changes

The unique telescoping frame on the GOMACO PS-2600 placer/spreader extends 6.5 feet (1.98 m) on the left side. The PS-2600 provides contractors with spreading widths from 12 feet (3.66 m) to 32 feet (9.75 m).

- The conveyor deflector directs the flow of concrete at the discharge end of the conveyor.
- The symmetrical design of the conveyor allows it to be mounted on the left or the right side, depending on job-site logistics.
- Spreading width up to 32 feet (9.75 m). Material is moved with a 20 inch (508 mm) diameter, hydraulic, split, reversible auger.
- Hydraulically pressure-compensated sideplates provide edge control and a spreading depth up to 19 inches (483 mm).
- The belt frame is hinged and can hydraulically raise and lower to allow trucks to pass by.
- Placing and spreading concrete with the two-track GOMACO PS-2600 in front of a slipform paver helps provide high production and positive rideability results.

G+ Controls – Designed For Concrete Paving

It is now the technology that pulls everything together... G+ is the center that Connects all of the resources.

Once you experience G+ controls, you won't be satisfied with anything else. It's a control system that is both easy to learn and easy to operate. G+ expresses itself in easy to understand international icons and full script explanations. It operates in all the major languages of the world and in the imperial or the metric system. It has a lightning-fast processing speed and features two-way communications between the accessories and G+. Its instant digital feedback combined with the tight closed-loop electronic and hydraulic control creates a G+ experience that is smooth, efficient, and accurate. There is nothing on the market that can compare, because G+ is a proprietary system that was designed by our in-house control experts incorporating what we have learned from decades of experience in the field, and from what we have learned from you, our customer.

- Machine Operation is Simple
- Machine Response is Fast
- Troubleshooting is Pinpointed, Quick, and Easy
- Detailed Fault History



The exclusive GOMACO G+ control system features self-diagnostics for grade and steering. It features new and easy-to-operate hardware with steering and travel dials. The elevation jog buttons, located to the left of the display screen, are used to manually change the elevation of the leg when the control loop is set to manual mode. Control dials are used for manual steering and travel. The G+ travel dial turns to adjust travel speed in one percent increments, and ramps up or down with smooth, precise speed control. This feature is ideal for controlling the smooth travel speed necessary for placing/spreading. The machine can be turned left or right with the G+ steering dial as it is moved in the manual travel mode.

A flat-panel 6.5 inch (165 mm) anti-glare display screen is provided with sensor-controlled backlight levels for superior visibility in all operating conditions. The screen is rugged and shock resistant in its construction to protect against dust, moisture, and rain. G+ provides a full color display on the control panel to illustrate the various aspects of the placer/spreader for setup and operation. A "run" screen on the control panel illustrates the various aspects of the placer/spreader. It includes leg position, travel speed and percentage of drive, steering, travel information, grade information, deviation meters, and more. Newly designed icons and color graphics make it easy to understand and easy to identify the targeted functions. G+ receives a track speed reading from pulse pickups in the track motors to give you real time feet (meters) per minute and total linear footage (meters). G+ controls feature a detailed fault history with the time stamp, date, and information to track when each fault occurred. GOMACO's G+ control system has been proven around the world.



HW-121218-D15

The GOMACO paving train consists of the PS-2600 and GHP-2800 using the Topcon 3D machine guidance system.



CS-071501-D5

The GOMACO PS-2600 with the 7500 series placer mold is placing rock. The placer's auger has a diameter of 24 inches (7.32 mm).



HW-121216-D6

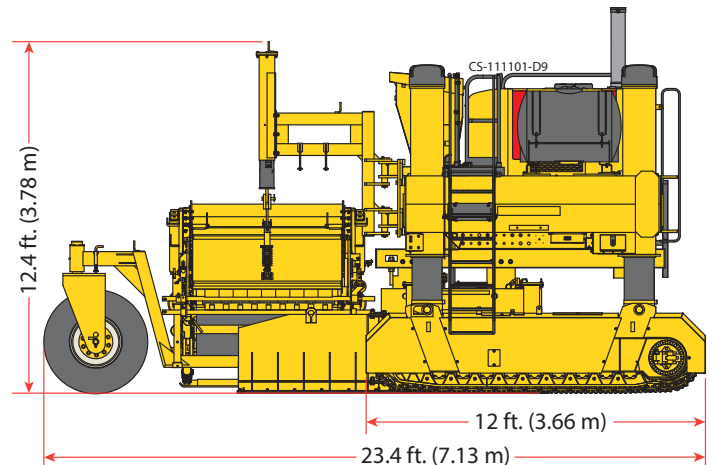
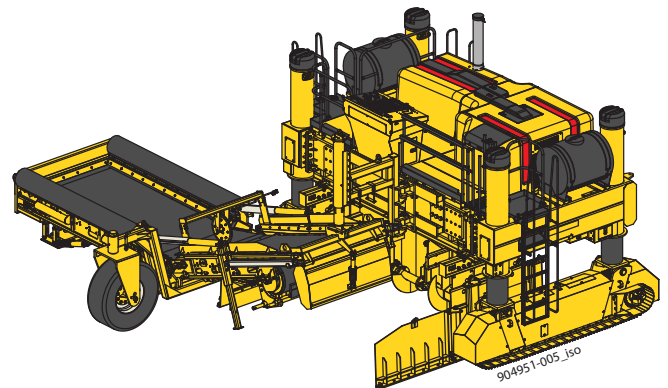
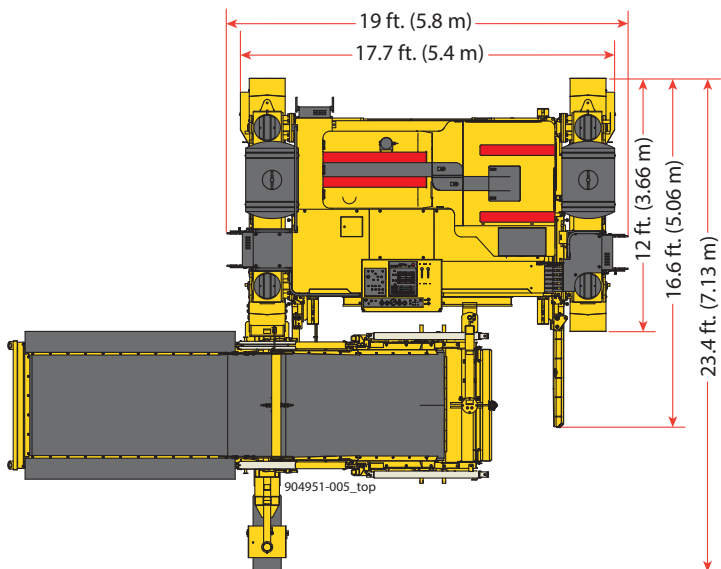
The GOMACO PS-2600 has a belt conveyor length of 22 feet (6.71 m) with a width of five feet (1.52 m).



CS-111101-D9

The PS-2600 is placing and spreading cement treated base. Its 7500 series placer mold has 10 inches (3.05 mm) of vertical adjustment with hydraulic cylinders.

*All dimensions are nominal.



The GOMACO PS-2600 With Rock Hopper Provides Full-Width Spreading for Base Preparation

The PS-2600, equipped with the GOMACO rock hopper, provides high-production placing and spreading.



CS-080204-D30

The GOMACO RTP-500 rubber-tracked placer feeds aggregate into the rock hopper and the PS-2600 places the aggregate at the proper thickness on top of the geotextile fabric.



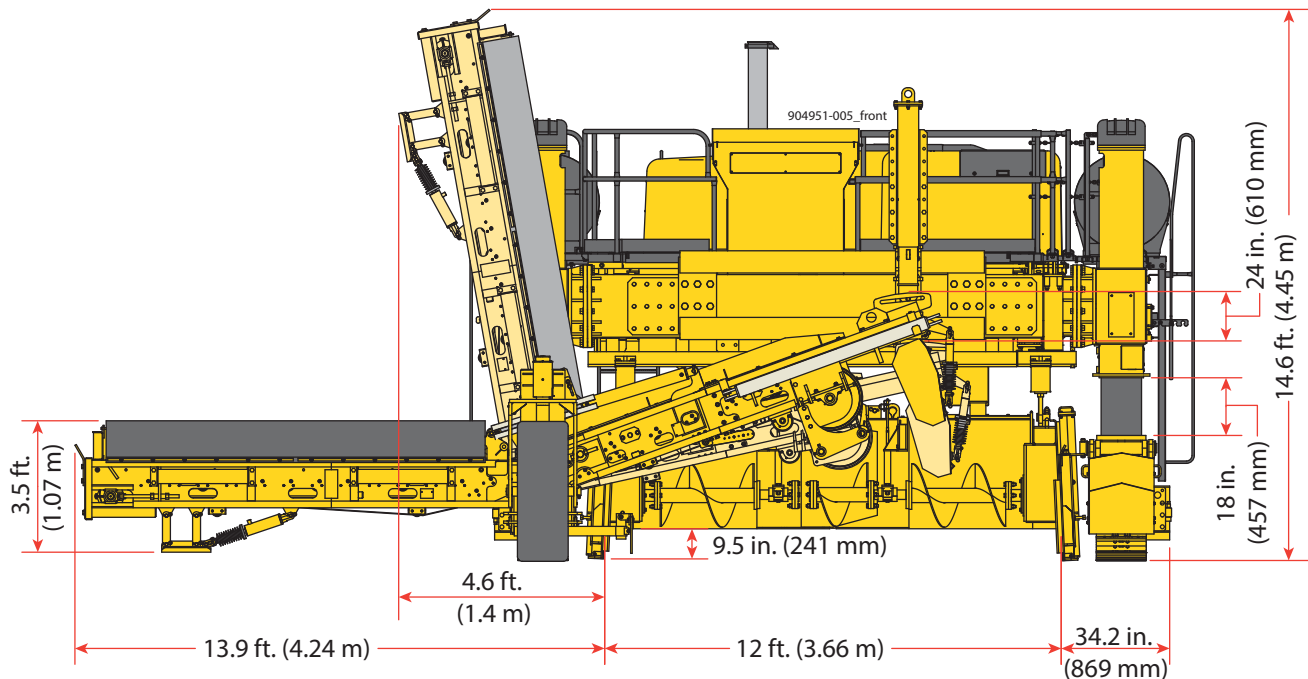
CS-080205-D14

The PS-2600 with rock hopper places an average of 550 feet (168 m) an hour at 28 feet (8.53 m) wide on this project.



CS-071201-D7

The GOMACO PS-2600 with the attached rock hopper is placing rock using the Leica Geosystems 3D guidance system. The GOMACO RTP-500 is placing the rock into the hopper attached to the PS-2600.



Quick...Clean...Efficient

The GOMACO-designed conveyor system provides quick, clean, and efficient delivery of concrete to the grade. The conveyor system is hydrostatic, single drive, with a variable belt speed up to nearly 500 feet per minute (152.4 mpm).



HW-101408-D11

The PS-2600 is equipped with a five foot (1.52 m) wide by 22 foot (6.71 m) long conveyor belt. The length of the conveyor belt can range in increments of 19 feet (5.79 m), 22 feet (6.7 m), 25 feet (7.62 m), and 28 feet (8.53 m).



HW-119602-12A-13

The PS-2600 will accommodate both end-dump trucks and ready-mix trucks, and depending on the job conditions, will allow two trucks to simultaneously dump onto the conveyor belt.



HW-051402-D15

The retaining wheel mounted on the conveyor provides stabilization of the belt while raising and lowering the hinged belt frame.



HW-090822-D17

The conveyor deflector directs the flow of concrete at the discharge end of the conveyor.



HW11503-D3

Quick and accurate spreading of the concrete is accomplished with the reversible, 20 inch (508 mm) diameter, hydraulically powered, split auger.



HW-050505-D6

The GOMACO paving train is made up of the PS-2600 placer/spreader, the two-track GHP-2800 slipform paver, and a T/C-600 texture/cure machine on this interstate project.

PS-2600 Specifications

ENGINE (emission-controlled)

Type: C-9, 8.8 liter Caterpillar turbocharged diesel engine.
Power: 275 hp (205.2 kW) @ 2200 rpm. 11 gph (41.6 Lph) @ 80% of rated horsepower.

SERVICE CAPACITIES

Fuel reservoir: 150 gal. (567.8 L).
Hydraulic oil reservoir: 207 gal. (783.6 L).

AUTOMATED CONTROL SYSTEM

Type: Electronic-over-hydraulic.
Controls: GOMACO's G+® control system features multi-language capabilities, metric or imperial measurements, color graphics, and a 6.5 in. (165 mm) anti-glare display screen.

TELESCOPING FRAME

Telescoping: Modular frame telescopes on the left side up to 6.5 ft. (1.98 m).

SPREADER AUGER SYSTEM

Type: Reversible 20 in. (508 mm) diameter hydraulically-powered split auger.
Auger speed: Up to 29.5 rpm.

STRIKE-OFF

24 ft. (7.32 m) wide: One 4 ft. (1.22 m) right-hand drive section, one 4 ft. (1.22 m) left-hand drive section, and one 4 ft. (1.22 m) power transition adjuster (PTA) section. Balance of inserts per customer specifications. Additional insert sections available for spreading widths up to 32 ft. (9.75 m). Hydraulically pressure-compensated sideplates with adjustment up to 19 in. (483 mm).
International: A 7.5 meter wide strike-off is available for countries using the metric system.

BELT CONVEYOR SYSTEM

Width: 5 ft. (1.52 m).
Length: 22 ft. (6.71 m).
Fold height: 14.6 ft. (4.45 m).
Hinge system: Two 3.5 in. (89 mm) by 30 in. (762 mm) hydraulic cylinders.
Hinge fold speed: 8 seconds up and 6 seconds down.
Belt drive: Hydrostatic.
Belt speed: Variable speed control up to 491.5 fpm (149.81 mpm).
Belt tensioning: Pressure-compensated hydraulic belt tensioning for varying haul road height.
Conveyor assembly system: Mounts on either side of machine.
Hydraulic conveyor deflector: Directs the flow of concrete at discharge end of conveyor.
Optional: 3 ft. (.91 m) conveyor inserts for variable spreading widths of 26 ft. (7.92 m) and wider.

TRACK SYSTEM

Type: Two hydraulically-powered, gear-driven crawler tracks.
Overall track length: 12 ft. (3.66 m), includes track guard.
Track pad width: 15.75 in. (400 mm).
Gearbox reduction: 202:1.
Track speed: Up to 69.5 fpm (21.18 mpm).
Track height adjustment: 36 in. (914 mm) hydraulic adjustment.

WEIGHTS (variable, depending on number of options)

Transport weight: 42,000 lbs. (19,051 kg) with frame extensions to 24 ft. (7.32 m) without strike-off mold and conveyor.
Operational weight: 70,000 lbs. (31,752 kg) with frame extensions to 24 ft. (7.32 m), strike-off mold and conveyor.
Note: Transport and operational weights and dimensions are variable, depending on machine options.

DIMENSIONS

Placing/spreading width: 12 ft. (3.66 m) to 18.5 ft. (5.64 m) with no inserts needed for frame.
Optional width: Up to 32 ft. (9.75 m) with additional frame inserts.
Operational length: 23.4 ft. (7.13 m).
Operational width: 19 ft. (5.79 m) to 39 ft. (11.89 m).
Operational height: 12.4 ft. (3.78 m) for placing and spreading material for an 8 in. (203 mm) slab.
Minimum transport length: 19 ft. (5.79 m) with 12 ft. (3.66 m) strike-off mold attached.
Minimum transport width: 12 ft. (3.66 m) with 12 ft. (3.66 m) tracks.
Minimum transport height: 9.75 ft. (2.97 m) without strike-off mold or 10.2 ft. (3.11 m) with strike-off mold attached.

ATTACHMENTS AVAILABLE

Four-corner outrigger system, manual operation or hydraulically powered.
High-pressure or low-pressure water system.
Frame extensions.
Conveyor inserts.
Strike-off inserts.
Series six crawler tracks.
18 in. (457 mm) conveyor hopper extension.
3D package for stringless control.
Other options are available to customize machine to accommodate applications and customer needs.

Designed for Dependable and Safe Service

GOMACO equipment is carefully designed to give years of dependable and safe service. The PS-2600 has five emergency stop buttons, one on the operator's console and one on each corner of the machine. The four E-Stops on the corners of the machine are accessible from the ground level.

Another safety feature is a backup alarm, which is designed to alert personnel around the machine when the tracks are set to operate in reverse. There is also an alarm that sounds when the conveyor belt frame is raised and lowered, to allow trucks to pass by. Other safety features include track guards, warning decals, operator's manual, safety manual, and excellent visibility over the entire placing and spreading operation.



The unique telescoping frame extends 6.5 feet (1.98 m) on the left side of the frame to accommodate variable-width applications.



The GOMACO PS-2600 paver/spreader places concrete over continuous steel reinforcing on a toll road in Texas.



The GOMACO PS-2600 has a minimum transport width of 12 feet (3.66 m) and a transport height of 9.75 feet (2.97 m) without the strike-off mold. The PS-2600 also has a minimum transport length of 19 feet (5.97 m) with the 12 foot (3.66 m) strike-off mold attached.



The GOMACO PS-2600 and GHP-2800 make up the paving train on this airport. This runway is being paved 25 feet (7.62 m) wide.

You can always find us at <http://www.gomaco.com/ps2600>

Cover Photo: HW-090822-D17

Manufactured under one or more of the following U.S. or foreign patents: 5,924,817; 5,941,659; 6,099,204; 6,450,048; CA2,211,331; 7,044,680; 7,284,472; 7,517,171; 7,845,878; 7,850,395; CA2,864,902; CA2,591,177; 8,855,967; 8,682,622; 9,051,696; 9,180,909; 9,200,414; and patents pending.

GOMACO and G+ are registered trademarks of GOMACO Corporation.

GOMACO Corporation reserves the right to make improvements in design, material, and/or changes in specifications at any time without notice and without incurring any obligation related to such changes. Performance data is based on averages and may vary from machine to machine.

Printed in U.S.A. © 2016 (8 GC) GOMACO Corporation Order #0145-0A10518

Worldwide Headquarters

GOMACO Corporation
 PO Box 151
 Ida Grove, IA USA 51445
 Ph: 712-364-3347
 www.gomaco.com
 E-mail: info@gomaco.com

European Headquarters

GOMACO International Ltd.
 Units 14 & 15
 Avenue One, Station Lane
 Witney, Oxon, OX28 4XZ, United Kingdom
 Ph: 44-1993-705100
 E-mail: pavinguk@gomaco.com



GOMACO Corporation's Quality Management System Is ISO 9001:2008 Certified By The American Systems Registrar.

Quality Policy: We Shall Meet Or Exceed Our Customers' Expectations.

