

COMMANDER III IDBI ATTACHMENT



GOMACO® *The Worldwide Leader in Concrete Paving Technology*

Look at Your Commander III Now!

Introducing the new GOMACO IDBI attachment... an independent unit providing dowel bar insertion behind the paver –

Independent attachment is self-contained, self-powered, and inserts transverse joint bars in pavements up to 16 feet (4.88 m) wide

Crane with rechargeable wireless remote control has 21 feet (6.4 m) of reach and 6500 pound (2948 kg) lifting capacity

Tamper bar, unique oscillating straightedge, paving pan and stainless repair scarring from the bar insertion process

Outriggers on the attachment have 48 inches (1219 mm) of stroke and can be hydraulically lowered and placed on the ground to support the full weight of the IDBI as it is attached to or detached from the paver.

The outriggers are also used to raise the unit so a trailer can be backed underneath for transport.

IDBI powered by its own engine

Hydraulically telescoping leg pivots on the rear of the paver allow the machine to achieve sufficient length to mount the IDBI to the paver. It also allows the legs to be retracted to meet shipping requirements or to pave without the IDBI

Insertion forks designed to reduce amount of scarring and vibration enhances consolidation of concrete around bars

CAN cable connects IDBI's controls to controller on the Commander III and allows the two systems to communicate

New piston-style legs utilize a round inner tube and a keyway for steering control

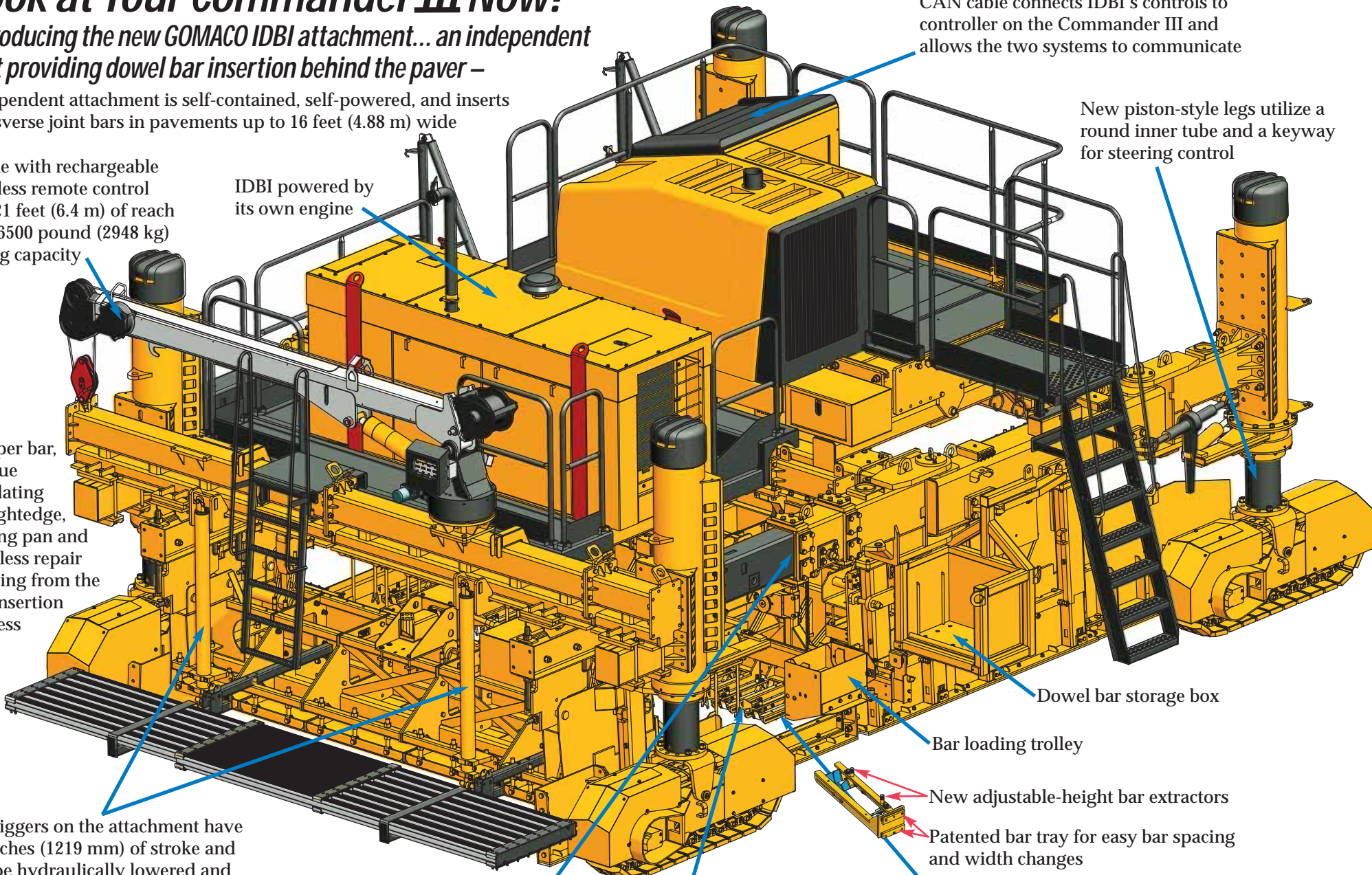
Dowel bar storage box

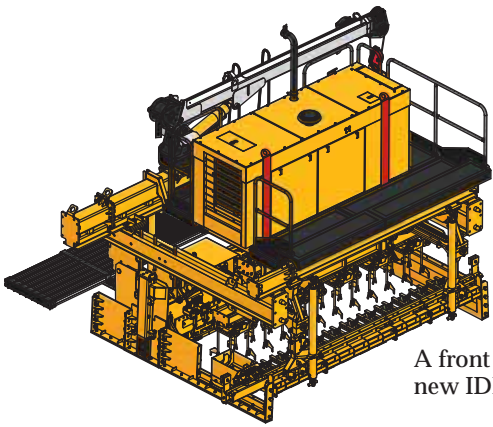
Bar loading trolley

New adjustable-height bar extractors

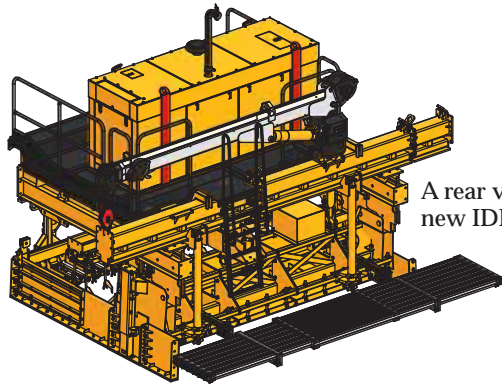
Patented bar tray for easy bar spacing and width changes

Bar-loading tray accommodates dowel bars ranging in size from one to 1.5 inches (25-38 mm) in diameter and from 18 to 24 inches (457-610 mm) in length





A front view of the new IDBI attachment.



A rear view of the new IDBI attachment.



CG-030917.D4

The IDBI attachment is an independent unit from the Commander III and is powered by its own engine.



SH-010916.D12

The IDBI attachment has outriggers, capable of supporting its full weight, for attaching or detaching from the paver, or raising for transport on a trailer.



CG-030914.D8

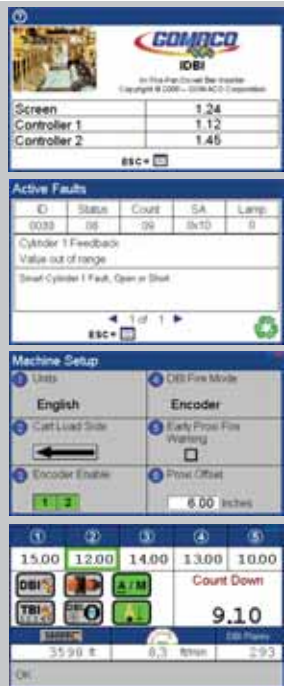
Patented insertion forks provide the industry standard in bar placement accuracy.



CG-091004.D8

A Commander III with IDBI attachment slipforms 12 feet (3.7 m) wide on a project in Marietta, Ohio.

The IDBI controls have all been designed in-house by GOMACO controls engineers. Its new GOMACO G+ control system is easy to learn and operator-friendly. The IDBI information is presented in full color, commands are presented in full text, and is able to operate in several languages, by customer's choice. It offers the choice of metric or imperial measurements. The new IDBI control system also offers troubleshooting capabilities and other features that will make start up and general paving each day faster and easier.



CG-030922.D7



The Commander III four-track with IDBI attachment slipforms a new lane for a roadway project in Fresno, California.

CG-091004 D20

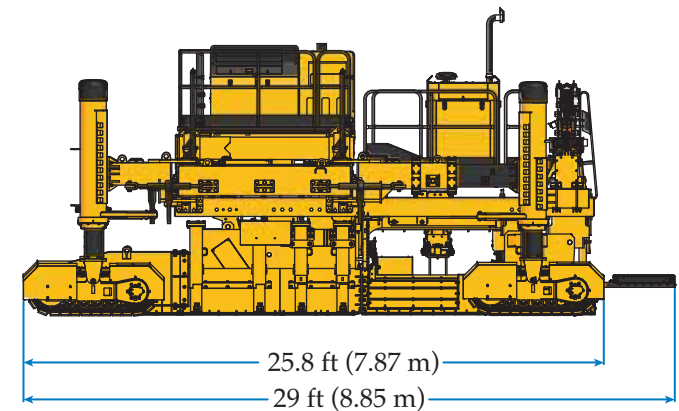


A scab-on, single lane rehabilitation project.



The four-track Commander III and IDBI attachment is capable of paving widths up to 16 feet (4.9 m).

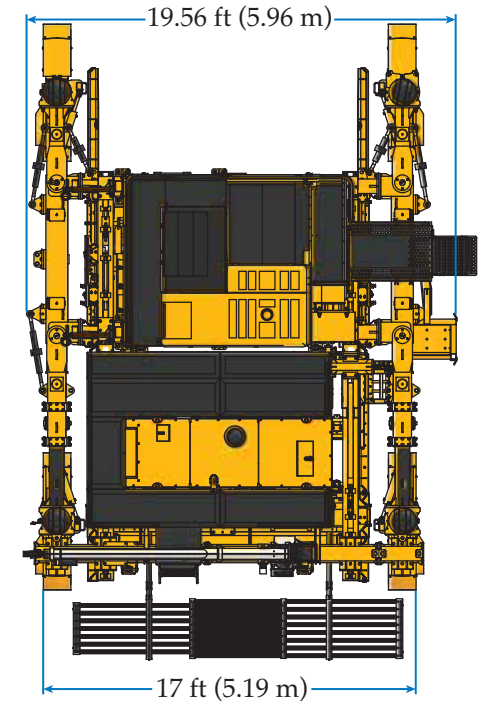
CG-091004 D7



CG-081002 D7



The Commander III features the 3100 series open-front mold with auger and adjustable stainless providing the superior GOMACO finish.



The Worldwide Leader in Concrete Paving Technology

You can always find us at:
<http://www.gomaco.com>

Worldwide Headquarters
GOMACO Corporation
PO Box 151
Ida Grove, IA USA 51445
Ph: 712-364-3347
www.gomaco.com
E-mail: info@gomaco.com

European Headquarters
GOMACO International Ltd. is located in Witney, England.
Sales offices are located in Singapore, Bolivia, Australia, China and India.
GOMACO has a worldwide distributor network for sales and service.

GOMACO Corporation reserves the right to make improvements in design, material, and/or changes in specifications at any time without notice and without incurring any obligation related to such changes. Performance data is based on averages and may vary from machine to machine.

Cover photo: CG-030918 D14

Printed in U.S.A. © 2011 (6 Printco 2500) Order #0400-0A10104
GOMACO Corporation

MANUFACTURED UNDER ONE OR MORE OF THE FOLLOWING U.S. OR FOREIGN PATENTS: 5,190,397; 5,209,602; 5,924,817; 5,941,659; 6,099,204; 6,450,048; 2,211,331; 2,069,516; 7,044,680; 7,284,472; 7,517,171; 7,845,878; 7,850,395; AND PATENTS PENDING.



GOMACO Corporation's Quality Management System Is ISO 9001:2008 Certified By The American Systems Registrar.

Quality Policy: We Shall Meet Or Exceed Our Customers' Expectations.

