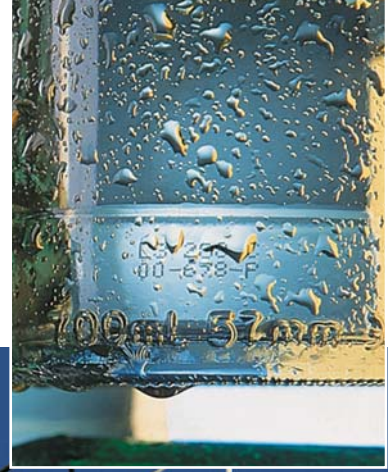


# 470

## Small Character Industrial Ink Jet Printer



The Willett 470 has been designed to perform in the harshest of industrial environments. With a wide range of application specific inks, the ultra high speed 470 is suitable for a range of industries, including those where hose down is required.

- ▲ Hygienic IP66 industrial design
- ▲ High speed coding
- ▲ Up to 4 lines of high quality code
- ▲ Lowest cost per code
- ▲ 2 dimensional Data Matrix code printing
- ▲ Push button start stop with automatic printhead flushing
- ▲ Auto power down facility
- ▲ Fully compatible with Connector software



**Willett**

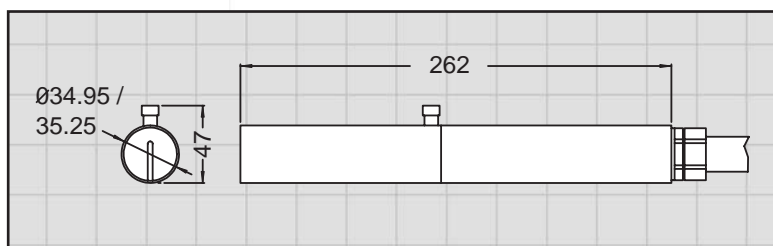
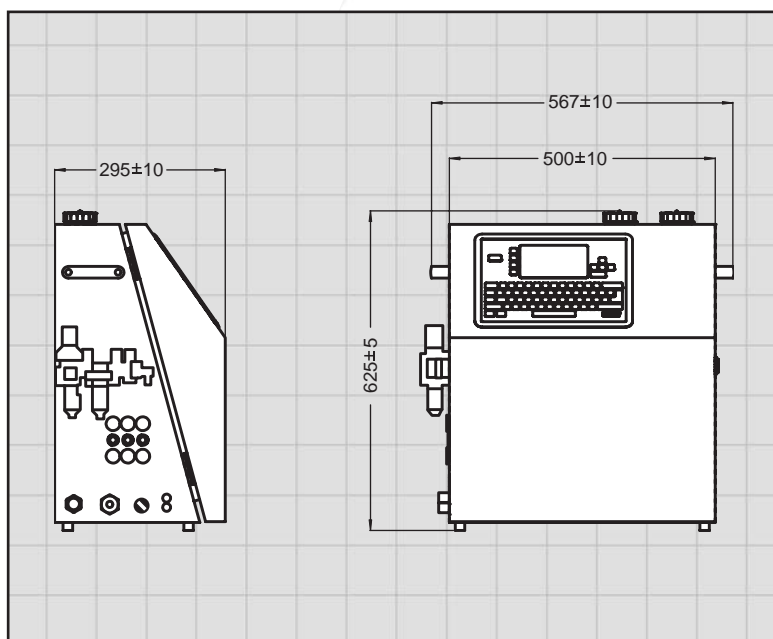
# 470

## Small Character Industrial Ink Jet Printer Technical Specification

0123456789 QWERTY UIOP ASDFG HJKLZX CVBNM  
MNBVC XZLKJHG FDSAFOI UYTR EQW 123456 789  
QWER TYU IOP ASDFGHJ KLZX CVBNM 01234 567  
PLMNJIUHB VGFDCX AZSRW23456 789 GHTY67 23

ABCDEFGHIJKLMNOPQRSTUVWXYZ01234

BATCH NUMBER 12-34-56  
BEST BEFORE 09/10/02  
PRICE 4.70



As part of the continuing process of development Willett reserves the right to alter the specifications and other details of its products without notice. Please enquire to Willett for latest details.

© Copyright Willett International Limited 2002

Willett products are copyrighted products and are the subject of granted and pending patents. The Willett name and logo are Trade Marks of Willett International Limited.  
Part No: 308-0470-101 ISSUE 3.

Willett The World's Coding and Labelling Company, offers a comprehensive range of industrial coding equipment including :-  
Large and Small Character Inkjet Printers, Label Printer Applicators, Programmable Overprinters, Standard and Customised Software, Systems Integration and a complete range of Consumables, Inks, Fluids, Ribbons and Labels.

### Standard Features:

- Shift coding
- Maintenance due indicator
- Simple WYSIWYG message creation
- Up to 4 lines of code
- Automatic print head flushing during start up and shut down
- Local language message editing and display
- Logo and graphics creation
- Password protection system
- Sequential numbering
- Continuous print capability
- Current and expiry time and date coding
- 3 metre printhead umbilical
- Barcode printing
- Optimum throw distance 9mm
- QWERTY keypad
- Simple push button operation
- Multi-message storage
- Multi-national character printing
- Low solvent consumption
- IP66 stainless steel enclosure
- ECC 200 data matrix 2D barcode

### Print Speed:

- Up to 2133 chars/sec/line

### Fonts:

- 5 x 5, 7 x 4/5(HS), 7 x 5, 9 x 6, 12 x 8, 16 x 11, 19 x 14, 24 x 17

### Print Height:

- 2 to 10mm

### Electrical Requirements:

- 110/230 Vac 50/60 Hz
- 200VA

### Environment:

- Operating temperature range 5°C - 45°C
- Humidity up to 90% non-condensing

### Inks:

A comprehensive range of inks, including low environmental impact and substrate specific, for a variety of applications and industries

### Data Input:

- Shaft encoder
- Product detector NPN/PNP
- RS232C serial port

### Options:

- Modem and remote diagnostics support
- LAN port / RS485 / 20mA loop
- Visual status indicators
- Alarm outputs
- Remote print message selection
- 6 metre printhead umbilical
- 90° printhead
- Air dryer kit
- Stainless steel base

### Compressed Air:

A clean (filtered to 5 micron) 4.5 bar - 7 bar air supply is required.

Air consumption - 60 litres/min (purge) and 30 litres/min (normal running).

### Approvals:

